

# Regional Growth Strategy *Review*

---

1. RGS 101 – Background & Context
2. RGS Review – Overview & Options





## **Our Mission**

*To enhance the quality of life of constituents through the facilitation of regional and community services for the benefit of present and future generations*

---

Background, Context and Questions

# **RGS 101**

---

# RGS's in British Columbia

---

The purpose of a regional growth strategy under Part 13 of the LGA:

**“promote human settlement that is socially, economically, and environmentally healthy and that makes efficient use of public facilities and services, land and other resources”**

---

# WHO & WHY

---

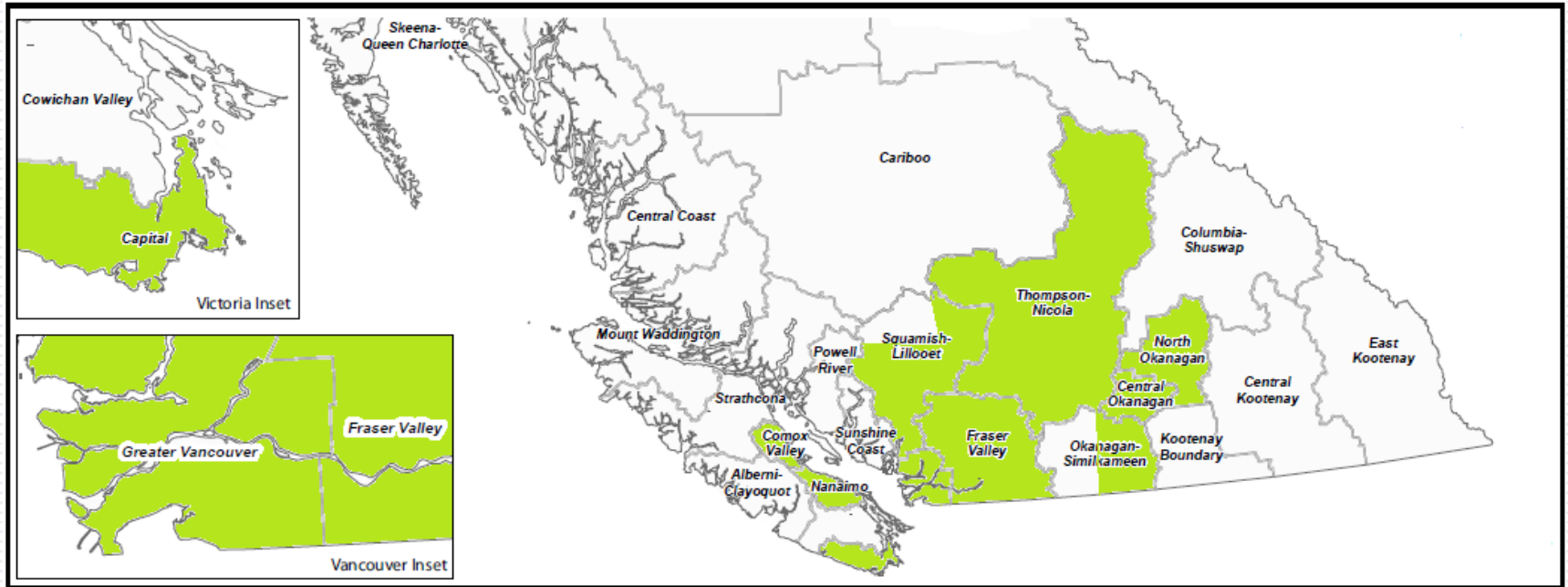
Most of BC's high growth regions – comprising 83 percent of the population – are using regional growth strategies to manage population change and guide decision-making and collaboration

- 10 regional districts

- Over 70 municipalities and one treaty First Nation

---

# WHERE



## High Growth Regions

Approximately 94% of BC's population increase between 2012 and 2032 will occur in these high growth regions

# WHEN & WHAT

---

A regional growth strategy must cover a period of at least 20 years from the time of its initiation and must include:

- ❑ Comprehensive statement on the future of the region
  - ❑ Population and employment projections
  - ❑ Actions proposed for the regional district to provide for the needs of the projected population in relation to: housing, transportation, regional district services, parks and natural areas, and economic development
  - ❑ GHG reduction targets and policies & actions to achieve targets
  - ❑ May deal with any other regional matter and may include information, maps illustrations or other material
-



# WHAT

## Regional Growth Strategy

---



- Is a vision that commits affected municipalities and regional districts to a course of action to meet common social, economic and environmental objectives
  - Is initiated and adopted by a regional district and referred to all affected local governments for acceptance
-



# HOW

---

## **Regular Reporting and**

452 1) A regional district that has adopted a regional growth strategy must

- a) establish a program to monitor its implementation and the progress made towards its objectives and actions, and
- b) prepare an annual report on that implementation and progress.

## **Review**

At least once every 5 years, a regional district that has adopted a regional growth strategy must consider whether the regional growth strategy must be reviewed for possible amendment.

---

# Questions

---

# SLRD Regional Growth Strategy

---

The SLRD RGS is intended to

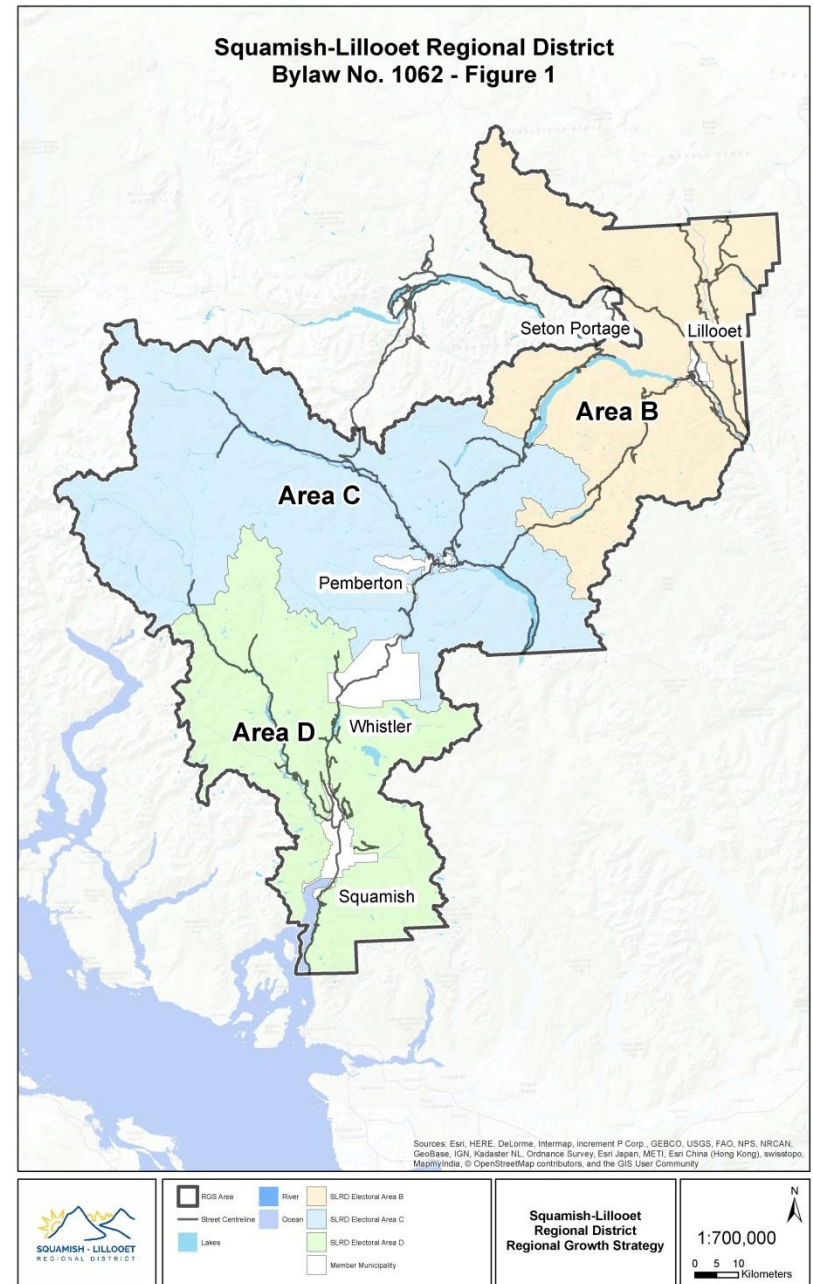
**“provide a broad policy framework describing the common direction that the regional district and member municipalities will follow in promoting development and services which are sustainable, recognizing a long term responsibility for the quality of life for future generations”**



# WHO & WHERE

The regional growth strategy for the SLRD is an initiative of the:

- SLRD (Areas B, C and D)
- District of Squamish (DOS)
- Resort Municipality of Whistler
- Village of Pemberton
- District of Lillooet



# Indigenous Territories

---

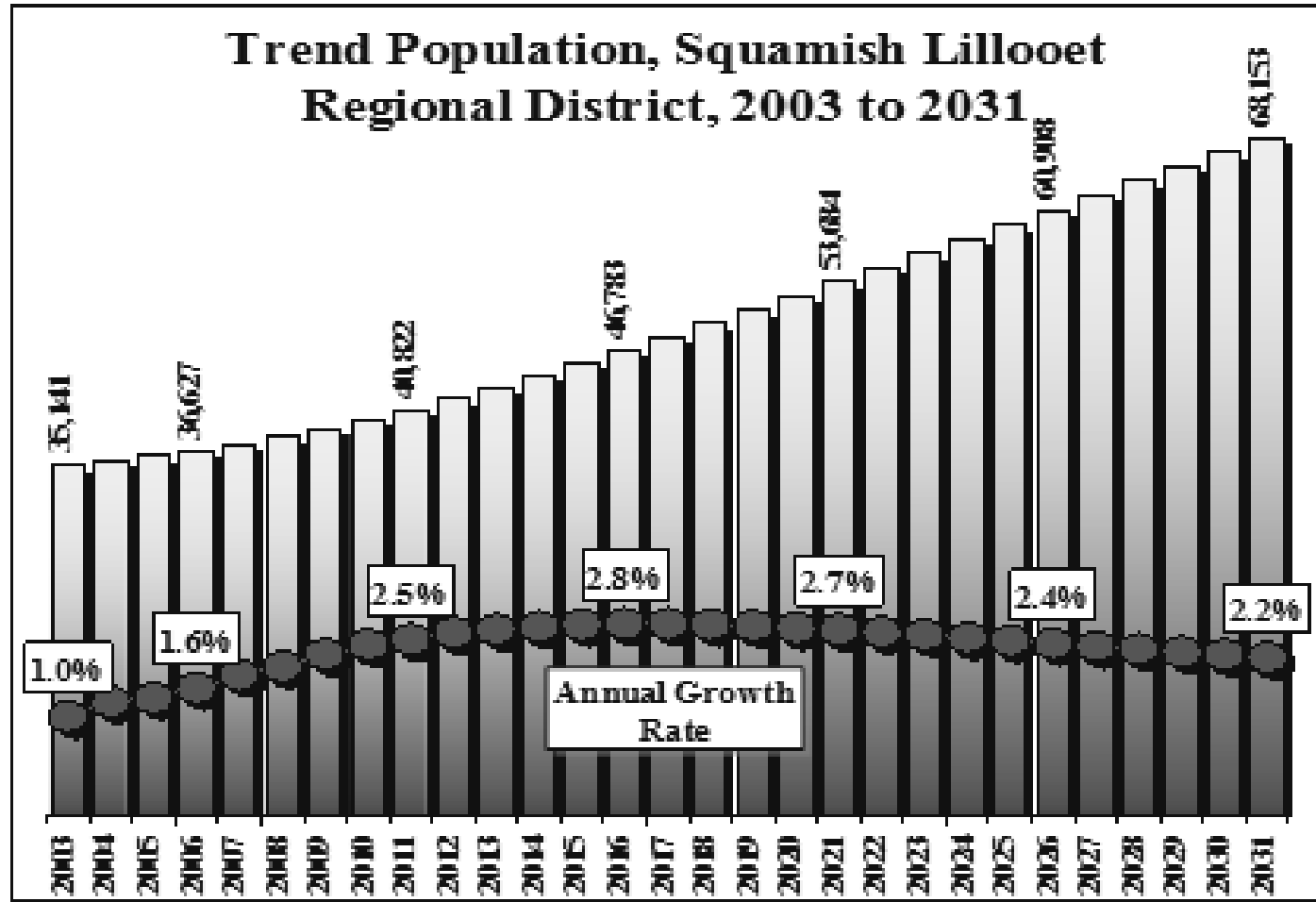
- Esk'etemc
- Stswecem'c Xgat'tem
- In-SHUCK-ch Nation
  - Samahquam
  - Skatin
- St'át'imc Nation
  - T'it'q'et/ P'egp'íg7lha
  - Xwisten
  - Sekw'el'was
  - Xa'xtsa
  - Xaxlip
  - Ts'kw'aylaxw
  - Tsalalh

- Lil'wat Nation
- N'Quatqua
- Nlaka'Pamux Nation
- Squamish Nation
- Stó:lō Nation
- Tsleil-Waututh Nation
- Tsilhqot'in

*Engagement pursued in the spirit of enhancing neighbour-to-neighbour relationship*

---

# WHY & WHEN



# WHY & WHEN

---

## **Urban Areas**

need to plan for compact, complete and sustainable communities, to accommodate expected growth over the next 30 years, and to ensure that urban densities are being achieved in the designated growth areas

## **Rural Areas**

land use patterns should support traditional rural lifestyles and economic transitions, while at the same time protect environmental values and resources on which both the urban and rural areas depend, and prevent sprawl and extension of urban services into the rural land base

---



# WHAT – the Strategy

---

- ❑ Smart Growth Principles
- ❑ Vision
- ❑ Goals
- ❑ Regional Settlement Planning Map



# RGS Smart Growth Principles

---

1. Direct urban development towards existing communities (avoiding urban and rural sprawl);
2. Build compact, complete, mixed-use neighbourhoods;
3. Create walkable communities;
4. Promote a variety of low impact transportation options;
5. Advocate a range of affordable housing options;
6. Foster distinct, attractive, economically sustainable communities with a strong sense of place;
7. Protect and promote responsible stewardship of green spaces and sensitive areas;
8. Ensure the integrity of a productive agricultural and forestry land base;
9. Endorse energy efficient infrastructure;
10. Ensure early and ongoing public involvement that respects community values and visions;
11. Cultivate a culture of cooperation, coordination and collaboration between local governments, provincial agencies, federal agencies, and First Nations.

# Vision

---

Our vision of the Squamish-Lillooet Regional District in 2025 and beyond is of a region comprised of diverse, distinct and liveable communities that share a commitment to:

- Practice economic, social and environmental sustainability;
  - Protect the region's natural beauty;
  - Enhance the region's world-class outdoor recreation;
  - Foster balanced and equitable economic growth; and
  - Make decisions that engage local, provincial, federal and First Nation governments, and reflect the values of communities.
-

# Goals

---

**GOAL 1** Focus Development into Compact, Complete, Sustainable Communities

**GOAL 2** Improve Transportation Linkages and Options

**GOAL 3** Support a Range of Quality Affordable Housing

**GOAL 4** Achieve a Sustainable Economy

**GOAL 5** Protect Natural Eco-system Functioning

**GOAL 6** Encourage the Sustainable Use of Parks and Natural Areas

**GOAL 7** Create Healthy and Safe Communities

**GOAL 8** Enhance Relations with Aboriginal Communities

**GOAL 9** Improve Collaboration among Jurisdictions



- ❑ Developing Compact Urban Form
- ❑ Establishing Long-term Settlement Boundaries
- ❑ Maintaining Nodal Development in the Sea to Sky Corridor
- ❑ Encouraging Urban Growth and Revitalization in Lillooet
- ❑ Promoting More Complete Communities
- ❑ Protecting Rural/Resource Landscapes
- ❑ Protecting Agricultural Land Base

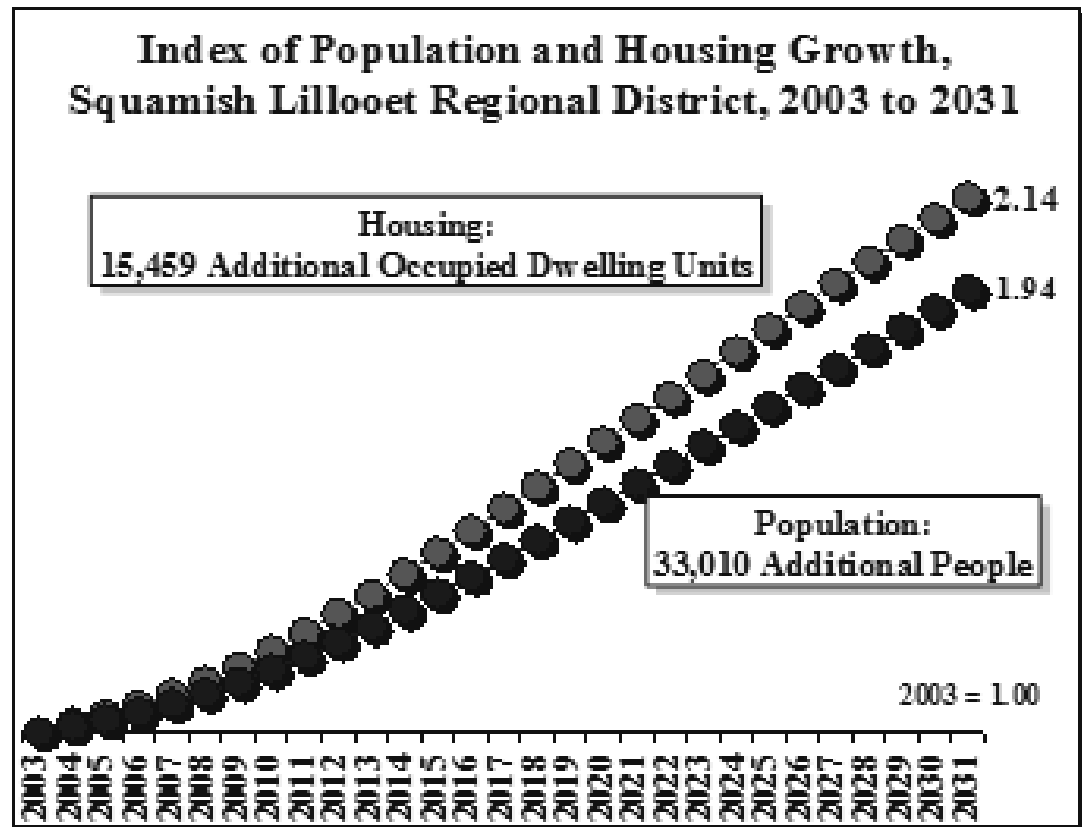
## Goal 1

Focus Development into Compact, Complete, Sustainable Communities

## Goal 1

Focus Development into  
Compact, Complete,  
Sustainable Communities

*"Population growth and settlement development will be primarily directed to compact Urban Areas and Master Planned Communities on the basis of smart growth principles."*



*Urban Futures, 2004*

# Strategic Directions

---

1.1 The SLRD and member municipalities agree that:

a) The RGS Settlement Planning Map will be used in conjunction with Official Community Plans to:

- encourage compact development within Urban Areas, Master-Planned Communities, and Serviced Residential and Rural Communities;
  - maintain the rural, low density character of Serviced Residential and Rural Residential Areas, and
  - protect and maintain Non-Settlement Areas.
-



# Strategic Directions

---

Official Community Plans should:

- (i) establish policies that are consistent with the Regional Settlement Planning Map;
- (ii) direct major settlement growth to the Urban Areas and Master Planned Communities;
- (iii) prevent major settlement growth in Non-Settlement Areas; and
- (iv) encourage Smart Growth strategies appropriate to the settlement types and local circumstances.

Member municipalities shall:

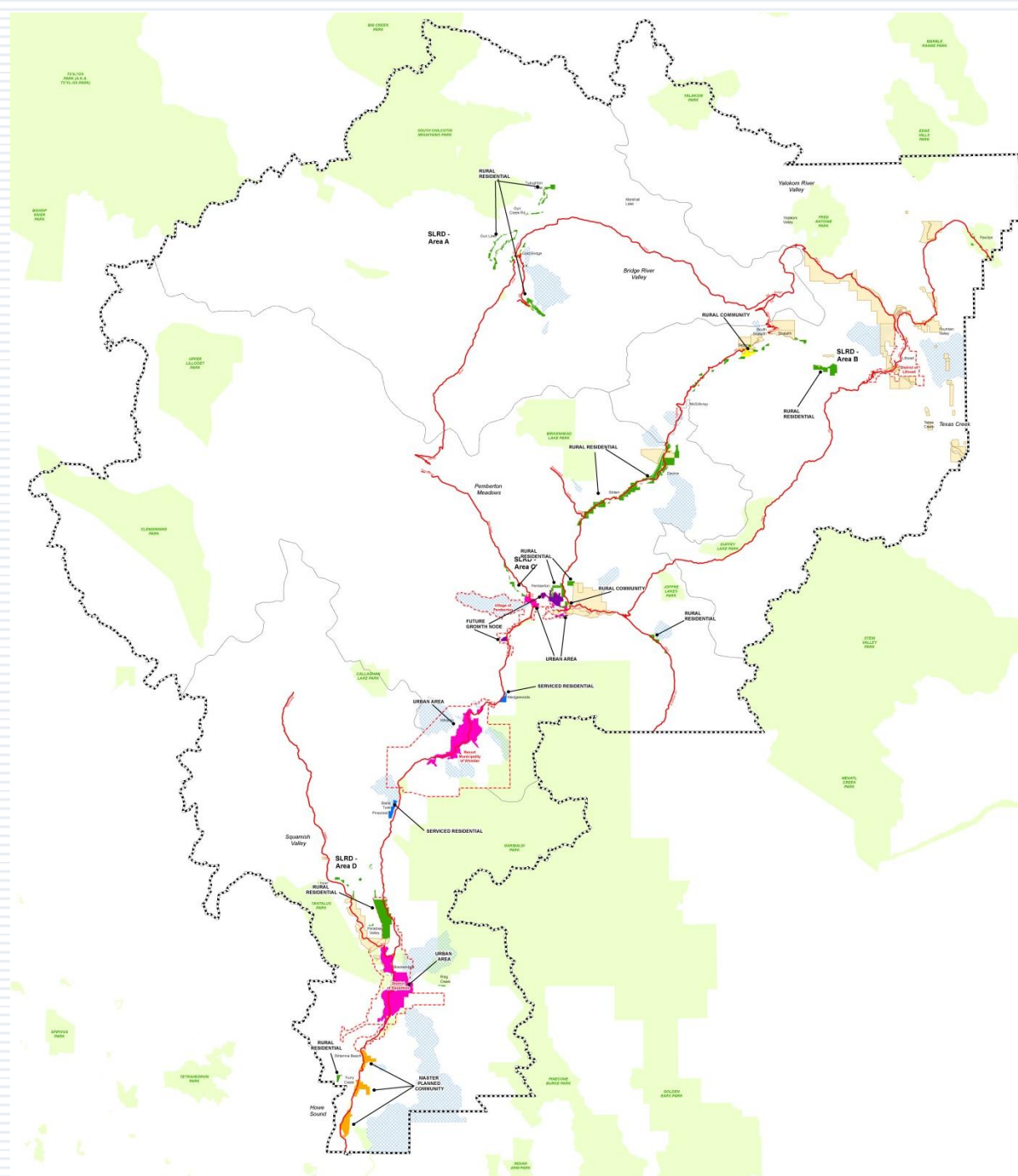
- (i) prepare and update Regional Context Statements which identify the relationship between an Official Community Plan and the SLRD Regional Growth Strategy

# Regional Settlement Map

## 1. Settlement Areas

- **Urban Areas**
- Non-Urban Areas
  - **Serviced Residential**
  - **Master Planned Community**
  - **Rural Community**
  - **Rural Residential**

## 2. Non-Settlement Areas



# HOW - Implementation

---

- ❑ Regional Context Statements
- ❑ RGS Amendments
- ❑ Implementation Agreements and Implementation Guidelines
- ❑ Annual Monitoring and Reporting



# Regional Context Statements

---

- ❑ Set out the relationship between the RGS and the member municipality Official Community Plans
- ❑ Main implementation tool of the RGS
- ❑ Regional Context Statements have been accepted for all four member municipalities







**Successful implementation of the RGS depends on cooperation between the SLRD and member municipalities, and the ability of local plans, policies and programs to contribute to the regional planning goals identified in the RGS**

# RCS Amendments

---

After a Regional Context Statement has been accepted by the SLRD Board there are **three instances in which municipalities will be required to submit a revised or new Regional Context Statement:**

1. When a new Official Community Plan is being developed.
  2. When amendments to an existing Official Community Plan are proposed that are not consistent with the accepted Regional Context Statement.
  3. Within five years of the Board's latest acceptance of the Regional Context Statement.
-

# RGS Amendments

---

S. 437 of the LGA – A regional growth strategy may include provisions that establish a process for minor amendments to the regional growth strategy

SLRD RGS prescribes a minor amendment  
**Process** and **Criteria**

Minor amendment process/criteria to be discussed later, as revisions are proposed as part of RGS *Review*

---



# Implementation Agreements and Guidelines

---

## **Implementation Agreements**

- Implementation Agreements (IA) will provide operational tools for ongoing RGS implementation
- Agreements will identify processes and activities to implement certain provisions of the RGS

## **Implementation Guidelines – PROPOSED**

SLRD to prepare guidelines to assist in the implementation of the RGS, such as:

- guidelines for the preparation of and amendments to Regional Context Statements
- for amendment of the Regional Growth Strategy
- for establishing protocols for OCP/Zoning Amendment referrals and First Nations engagement

(PROPOSED ADDITION – TO BE DISCUSSED LATER)

---

# Annual Monitoring and Reporting

---

**Monitoring** = process of collecting information, analyzing trends and gauging progress toward goals

**Reporting** = evaluation and is the process of communicating the results of the monitoring

- SLRD RGS includes 30 indicators, arranged around the 9 Goals
- Indicators are based on smart growth principles and are aligned with the SLRD Integrated Sustainability Plan, allowing collection of data to serve two required monitoring programs with the SLRD

Under the current indicator framework, Monitoring Reports have been prepared for 2012 and 2013

(Note: Reporting is conducted the year following the reporting period; 2014 and 2015 monitoring will occur post RGS Review)

# RGS Review

---

- ❑ LGA requires regular review of regional growth strategies, with review to be considered at least once every 5 years
- ❑ Has been 7 years since the SLRD RGS was completed (the RGS Bylaw was completed and received first/second reading in 2008, though not adopted until 2010)
- ❑ This will be first major review since adoption

Note: 2014 RGS housekeeping amendment - undertaken to provide for the acceptance of member municipality Regional Context Statements

---

# Questions

---

# RGS Review

---

- ☐ Scoping Period
- ☐ Scope
- ☐ Key Goal



***RGS Review - Initiated as a major amendment***

---

# Scoping Period

---

## **Areas to Address:**

- ☐ Minor Amendment Criteria and Process
  - ☐ Implementation – Part 4 Implementation and Implementation Guidelines
  - ☐ Growth Management – Goal 1
  - ☐ Waste Management
  - ☐ Transportation
  - ☐ Food & Agriculture
  - ☐ Climate Change
  - ☐ First Nations Relations
-

# Scope

---

- The RGS Review is intended to be an **update not an overhaul** of the current RGS
- Some content revisions and additions are proposed (i.e. the development of a Food & Agriculture Goal)



Focus = implementation of the RGS and developing criteria, guidelines, and processes to support collective agreement and responsibility

---



# Key Goal

---

Develop Implementation Guidelines – a set of norms that guide collective implementation of the RGS

- ❑ best practice approach to support implementation
- ❑ provided as resources, to live outside the RGS Bylaw in a separate document

NOTE: Options and discussion on these topics to follow post lunch as part of RGS Review

---

# Questions

---