

# Tipping Fees

Effective June 1, 2025



Item	Details	Rate
<b>Banned Material Surcharge</b> (load containing ≥ 5% recyclable/ organic materials)	(minimum charge \$25)	\$80.00 per m <sup>3</sup>
<b>Household Waste</b>	One (1) bag weekly per household (77 L or 18 gal or less)	No Charge
	Small bag (less than 77 L or 18 gal)	\$2.00
	Large bag (more than 77 L or 18 gal)	\$4.00
	Loose/ Unbagged/ Bulky (minimum charge \$6)	\$12.00 per m <sup>3</sup>
<b>Banned Material Surcharge</b> (load containing ≥ 5% recyclable/ organic materials)	(minimum charge \$25)	\$100.00 per m <sup>3</sup>
<b>Construction Waste</b> (drywall must be stamped post 1990)	Loose/ Unbagged/ Bulky (minimum charge \$6)	\$18.00 per m <sup>3</sup>
<b>Miscellaneous</b>	Love seat/ Full size couch	\$8.00
	Single couch chair	\$6.00
	Mattress - twin	\$5.00
	Mattress - double/queen	\$10.00
	Mattress - king	\$15.00
	Invasive species	\$1.50 per bag
<b>Garden &amp; Yard Waste</b> (grass, hedges, flowers, weeds, leaves, vegetable stalks)	Small bag (less than 77 L or 18 gal)	\$1.50
	Large bag (more than 77 L or 18 gal)	\$3.00
<b>Wood Waste (clean)</b> (pruned branches, shrubs, stumps, fallen trees)	Fire Fuel Management Program	No Charge
<b>Septage Waste</b> (domestic origin only)	From RV's per discharge (up to 1m <sup>3</sup> )	\$10.00
	From SLRD or commercial hauler per m <sup>3</sup> (220 imperial gallon)	\$12.00
<b>Recycling &amp; Stewardship Programs</b> (no charge items listed below)	Car batteries	\$2.00
	Car and car body	\$60.00
	Car hulk (no tires, gas tank, engine, radiator, air conditioner)	\$30.00
	Metal (bulk)	\$5.00 per m <sup>3</sup>
	Microwaves	\$2.00
	Propane tank	\$4.00
	Large appliances with refrigerants (refrigerator, freezer, air conditioner)	No Charge
	Large appliances (stove, washer, furnace, water heater)	No Charge
	Tires - passenger and light truck (on rim surcharge \$4.00)	\$8.00
<b>Reuse Shed</b>	Must be approved by attendant	No Charge

Loads greater than a pickup truck with sideboards/2m<sup>3</sup> are not accepted.

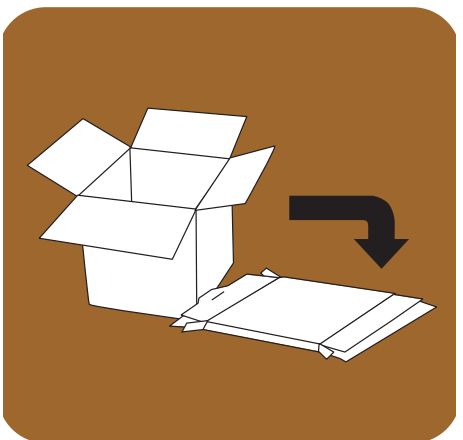
## Accepted Recycling Materials - No Charge



Mixed Containers



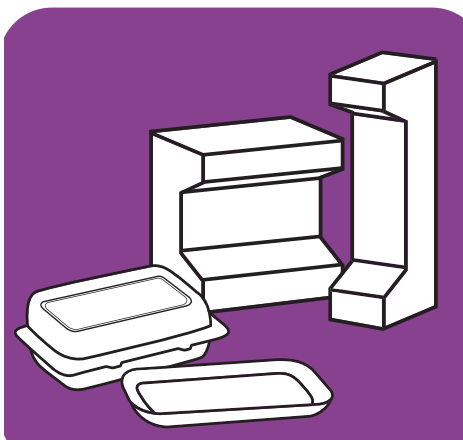
Mixed Paper



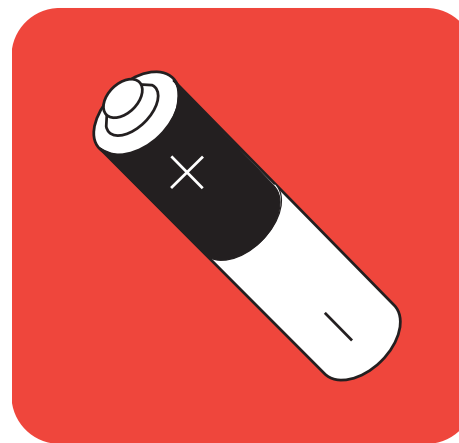
Cardboard



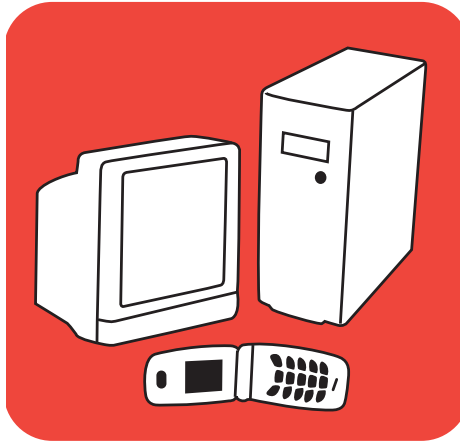
Flexible Plastics



Foam Packaging



Household Batteries



Electronics & Cellphones



Used Oil & Containers



Oil Filters



Large Appliances

The following items are **NOT** accepted at the Gold Bridge Transfer Station, BUT are accepted at the facility below for recycling:

### Lillooet Landfill & Recycling Centre

405 Landfill Rd, Lillooet BC



Glass Jars & Bottles



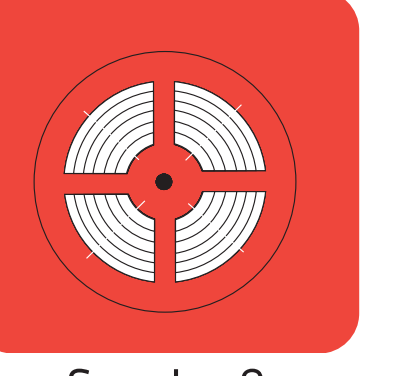
Used Paint



Lightbulbs & Fixtures



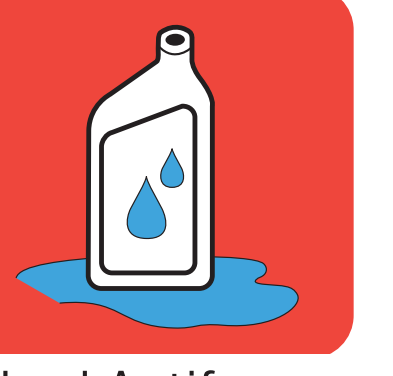
Small Appliances & Power Tools



Smoke & CO Alarms



Household Hazardous Waste



Used Antifreeze & Containers

### The Country Store

1080A Moha Road, Lillooet BC



Refundable Beverage Containers



For more information,  
Call 1-800-298-7753 or visit  
[www.slrd.bc.ca/lovethisplace](http://www.slrd.bc.ca/lovethisplace)



Love this place.  
Reduce your waste.