

## **EVACUATION ORDER**

### **ELECTORAL AREA A - DOWNTON LAKE WILDFIRE K71649**

**UPDATED: September 11<sup>th</sup>, 2023, at 1600**

**This Evacuation Order supersedes the original Order issued on August 31<sup>st</sup>, 2023.**

Pursuant to Section 12 (1) of the BC Emergency Program Act an **Evacuation Order** is currently in place by the Squamish-Lillooet Regional District due to immediate danger to life safety caused by the Downton Lake fire burning out of control in the Gun Lake Area.

The **Downton Lake Evacuation Order** remains in effect for SLRD properties in the following areas of Electoral Area A:

- **All SLRD properties on Gun Lake West Rd between Keir Rd. and Weaver Rd.**
- **All SLRD Properties north of Saddle Road**
- **ALL SLRD Properties on Gun Creek Road**
- **All SLRD Properties on the South side of Lajoie Lake (aka Little Gun Lake)**
- **Any other SLRD properties located within the boundary noted on the attached map.**

**This area is extremely hazardous due to wildfire impacts such as danger trees, ash pits, and the potential for toxic substances released from burned structural debris.**

**IF YOU HAVE NOT ALREADY DONE SO, YOU MUST LEAVE THE AREA IMMEDIATELY.**

**NOTE:** Some properties on the east side of Gun Lake, Tyaughton Lake, Gold Bridge and Bralorne have been downgraded from Evacuation Order to Evacuation Alert. Please see the updated Evacuation Alert document issued September 11<sup>th</sup>, 2023 for more details.

**IMPORTANT: No personal watercraft are permitted on Gun Lake due to ongoing BC Wildfire Service emergency response.**

#### **WHAT YOU SHOULD DO:**

- If this is **not** your primary residence, you should return to your primary residence, if you are able to do so.
- Accommodation in the area is limited. Make arrangements to stay with family and friends, if possible.



Box 219, 1350 Aster Street  
Pemberton, BC V0N 2L0  
Ph. 604-894-6371, 1-800-298-7753  
F: 604-894-6526  
info@slrd.bc.ca [www.slrd.bc.ca](http://www.slrd.bc.ca)

- If emergency accommodations are required, register at:

Lillooet District Rec Centre  
930 Main Street – Room 101, Lillooet BC V0K 1V0  
Open: 10am to 3pm on Monday to Friday, 10am to 2pm on Saturday, closed on Sunday  
Outside of these hours call: 250-256-8524

**OR**

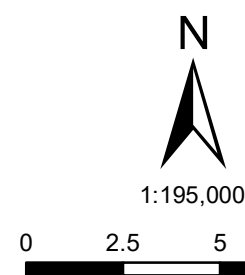
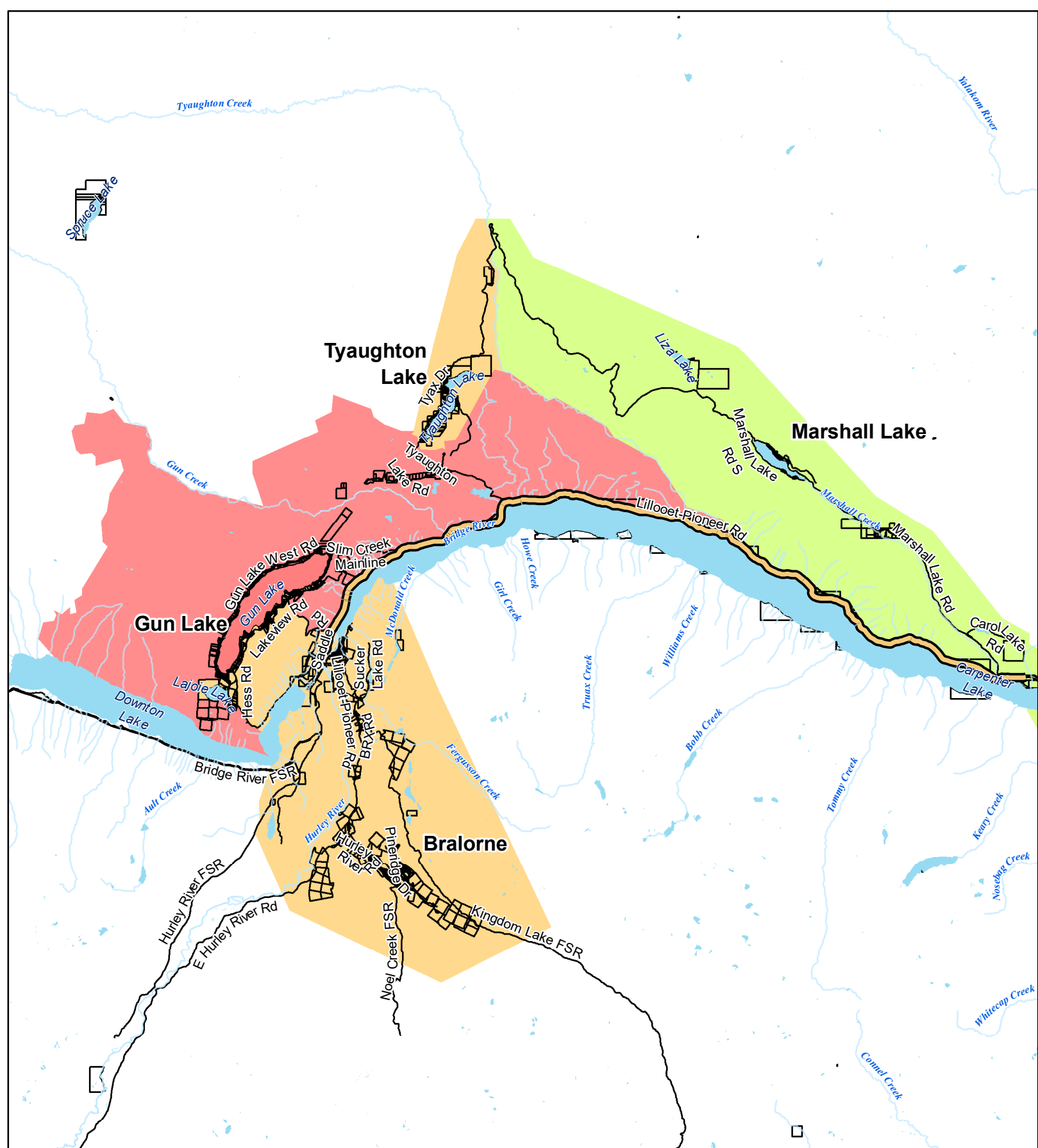
Canadian Red Cross 24/7 Disaster Assistance Line: 1 888 800 6493

- If you need transportation assistance from the area, contact the SLRD on-call Duty Manager at **604-356-3082**
- Shut off all gas and electrical appliances other than refrigerators and freezers.
- Close all windows and doors. Close gates (latch) but do not lock.
- Gather your family and, if you have room, take a neighbour or someone needing transportation. Do not use more vehicles than you have to.
- Take critical items (medicine, purse, wallet, and keys) only if they are immediately available. Take pets in pet kennels or on a leash.

Further information will be posted at [www.slrd.bc.ca](http://www.slrd.bc.ca) and notices through the SLRD Alert Messaging service. Subscribe to SLRD Alert for free at [www.slrd.bc.ca/slrdalert](http://www.slrd.bc.ca/slrdalert) to receive emergency notifications via email, text messages, and voicemail.

A handwritten signature in black ink that reads "JCFord".

Jen Ford - Board Chair  
Squamish-Lillooet Regional District



**Downton Lake Wildfire K71649**  
**Evacuation Order and Alert Areas Effective September 11, 2023**

- Evacuation Order Area
- Evacuation Alert Area
- Evacuation Alert Rescinded
- Lillooet-Pioneer Road 40
- SLRD Properties



Date: 2023-09-11