

RGS Monitoring 2024 Snapshot

This is the fifth monitoring report to track progress on the regional goals established within the Squamish-Lillooet Regional District (SLRD) Regional Growth Strategy (RGS), as reviewed and amended in 2025, and the Integrated Sustainability Plan (ISP) of 2013. The purpose of this monitoring report is to build on the 2012, 2013, 2014/15 and 2016-2020 reports so that progress toward or away from the RGS and ISP goals is continually evaluated.

WHAT IS MONITORING AND EVALUATION?

Monitoring is the process of collecting information, analyzing trends and gauging progress toward goals. Evaluation involves reviewing the monitored information, adding additional insights on progress and determining whether the efforts directed at supporting regional goals have been appropriate.

METHODOLOGY

Data collection for the 2020-2024 report occurred in 2025. While specific targets related to the RGS and ISP goals have yet to be defined, for this monitoring report, the assumed target is continuous improvement of results.

RGS INDICATOR HIGHLIGHTS

POPULATION

POPULATION DENSITY

HOUSING AFFORDABILITY

NON-MARKET HOUSING

EMPLOYMENT INCOME

LANDFILLED WASTE

WATER USE

ENERGY USE

GREENHOUSE GAS EMISSIONS

ELECTRIC VEHICLES

VISITOR TRAVEL

COMMERCIAL OPERATORS

RECREATION FACILITIES

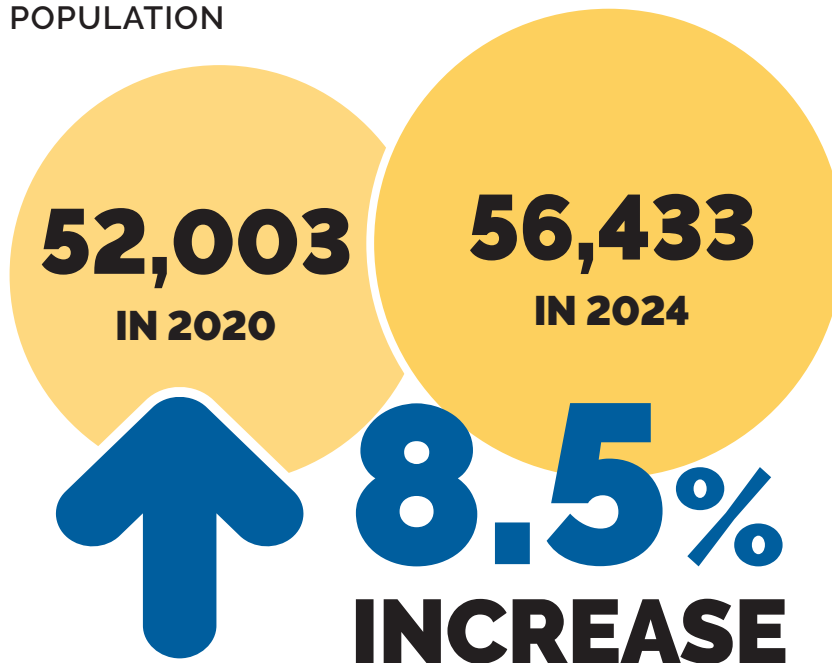
YOUTH WELL-BEING

LAND MATCHING

URBAN AGRICULTURE PLOTS

WORKING FARMLAND

POPULATION



Want more? Access the full report here.

slrd.bc.ca

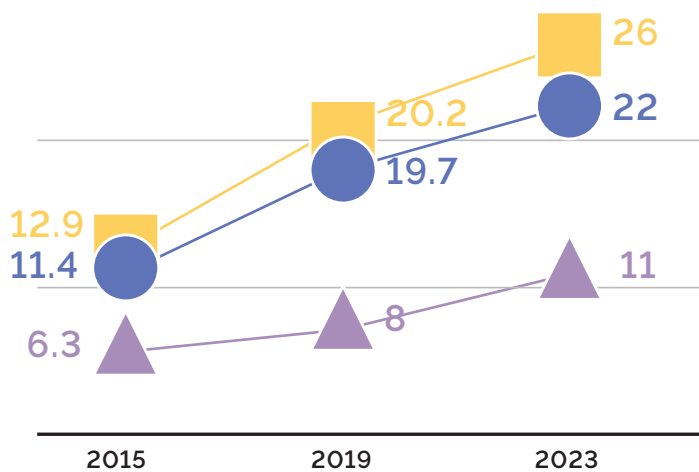
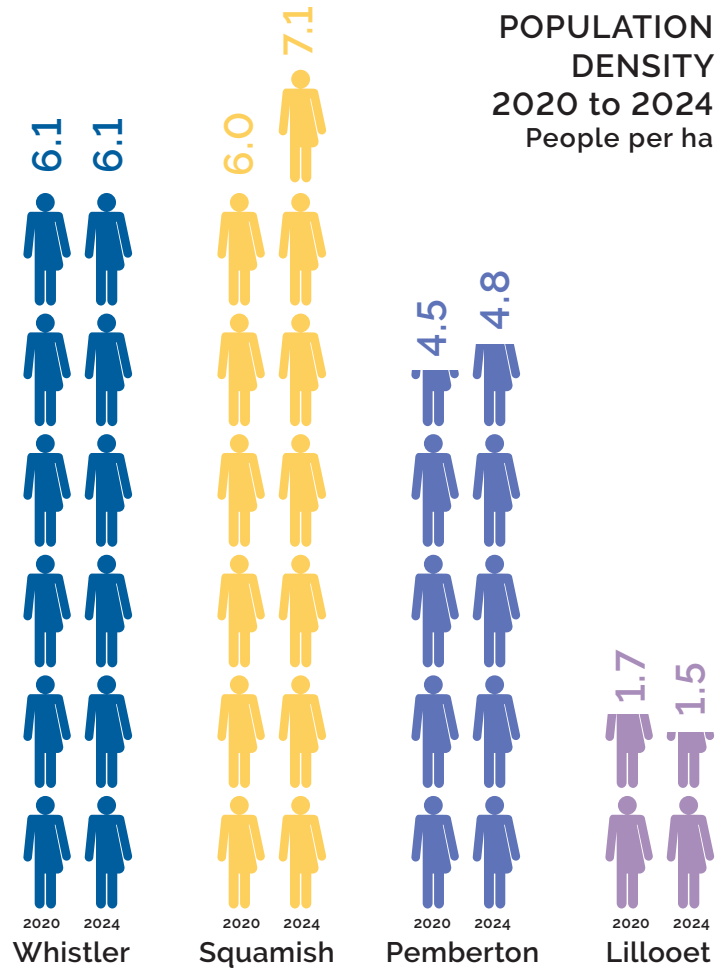
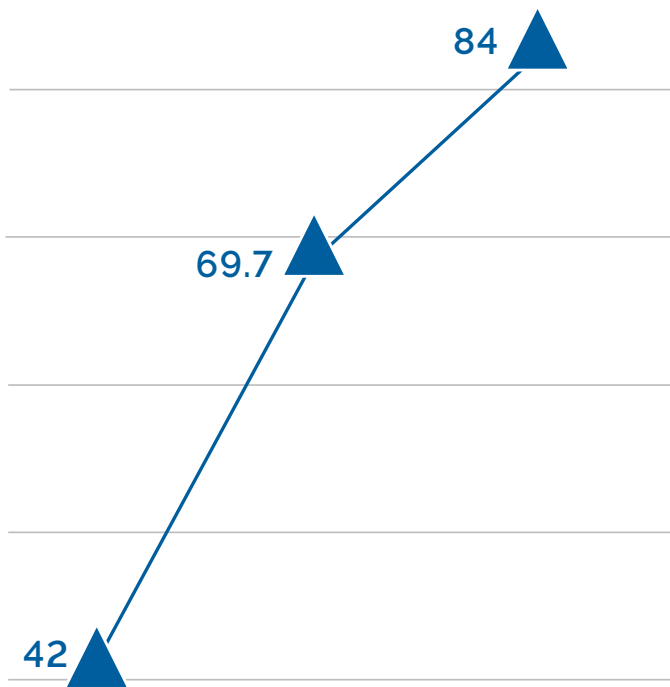
NON-MARKET HOUSING UNITS



**11.5%
INCREASE**



RATIO OF HOUSE PRICE TO INCOME



▲ WHISTLER ■ SQUAMISH
● PEMBERTON ▲ LILLOOET

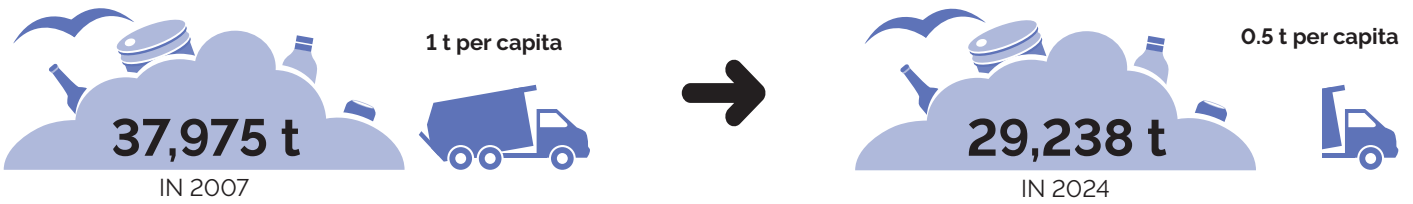
EMPLOYMENT INCOME REPORTED BY SLRD BASED ON TAX FILERS

Squamish area residents account for **56%** of the total employment income in the SLRD area.



**INCREASE OF
↑ 46.7%**

AMOUNT OF LANDFILLED WASTE



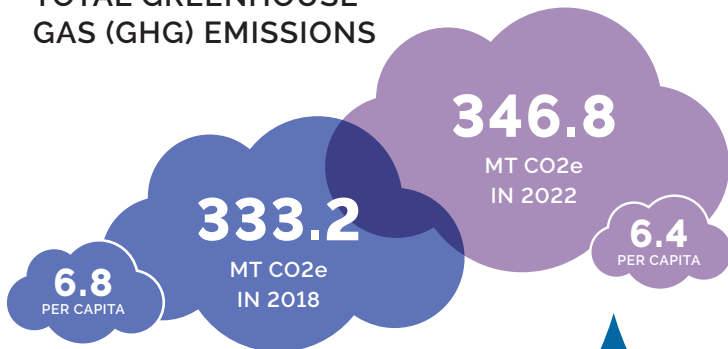
PER CAPITA WASTE HAS BEEN CUT **BY HALF** SINCE 2007

TOTAL ENERGY USED

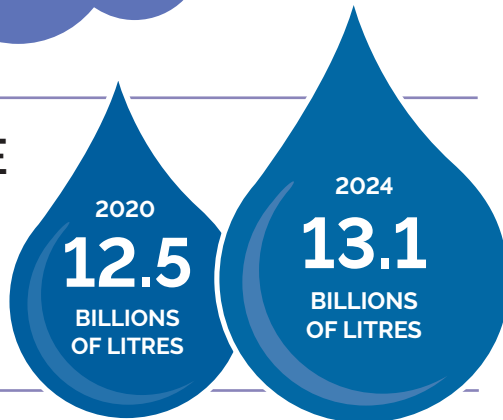


54% FROM BUILDINGS IN 2022

TOTAL GREENHOUSE GAS (GHG) EMISSIONS

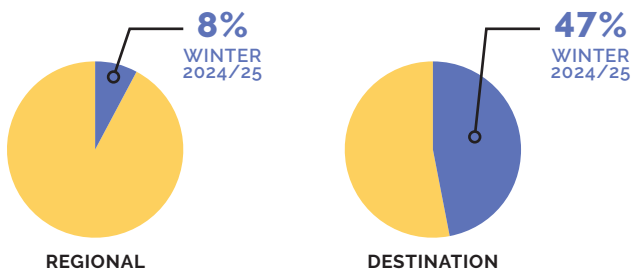


POTABLE WATER USE

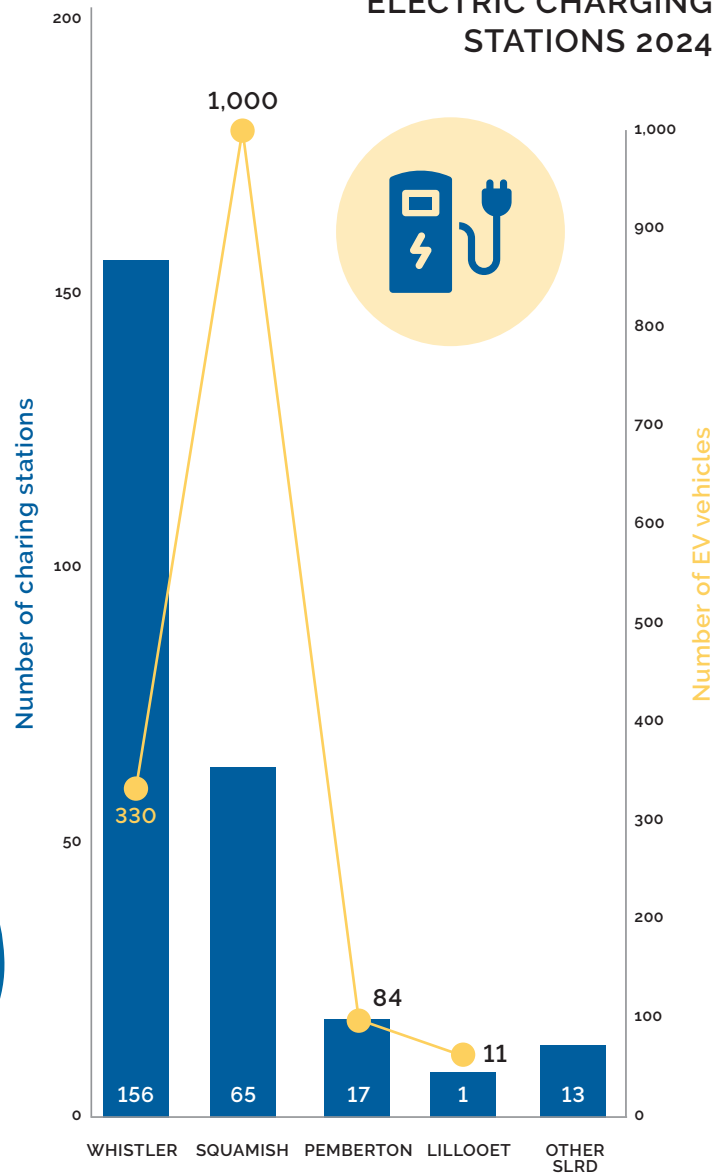


VISITOR TRAVEL

Regional visitors tend to avoid shared transport.



ELECTRIC CHARGING STATIONS 2024



5% OF ALL VEHICLES IN SQUAMISH ARE EV

NUMBER OF COMMERCIAL CROWN LAND RECREATION OPERATORS

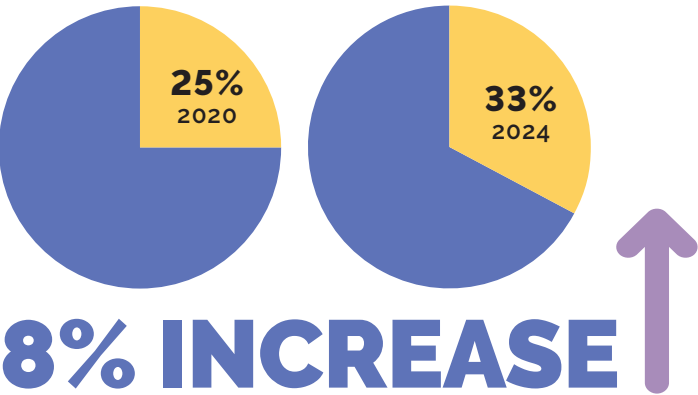
65
in 2020

85
in 2024

41%↑
INCREASE
MOSTLY DUE TO BIKE OPERATORS

PROPORTION OF GRADE 8 STUDENTS
THRIVING IN THE SEA TO SKY

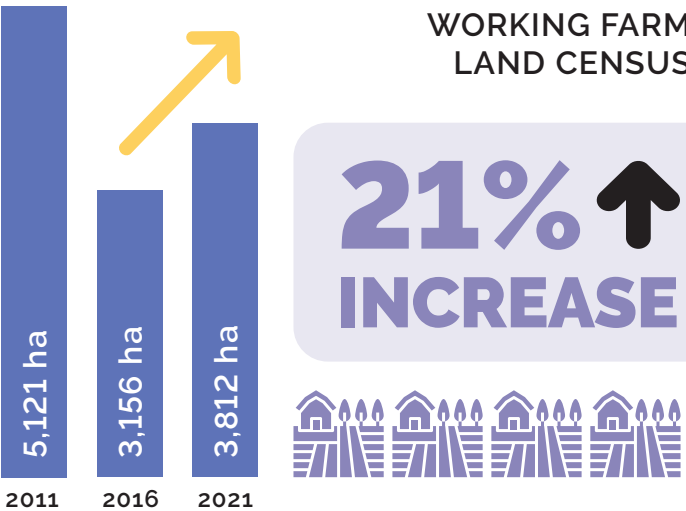
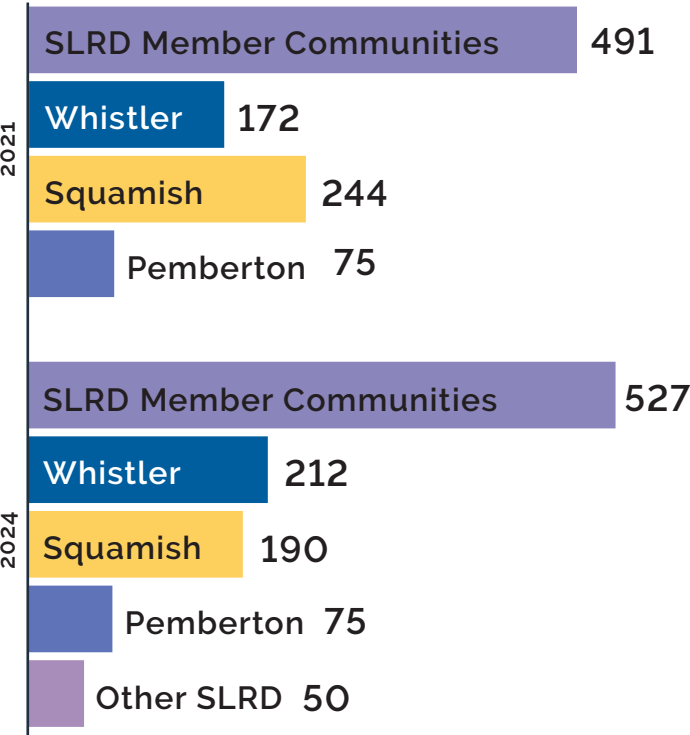
MDI Dashboard



RECREATION FACILITIES



URBAN AGRICULTURE PLOTS



FARM LAND MATCHING

