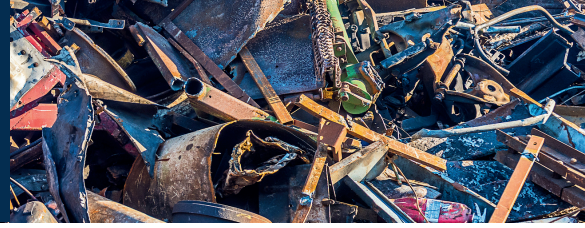


# Recreational Vehicle (RV) Disposal:

## Lillooet Landfill & Recycling Centre



This guide summarizes how to properly dispose of a Recreational Vehicle (RV) at the Lillooet Landfill.

All steps must be completed before the RV can be accepted.

### Important Information

- Recyclable Materials must not be landfilled
- Hazardous Waste must not be landfilled
- Asbestos-Containing Materials require [SLRD authorization](#)
- Requirements may change as new recycling options become available

### Step 1. Review Landfill Bylaw

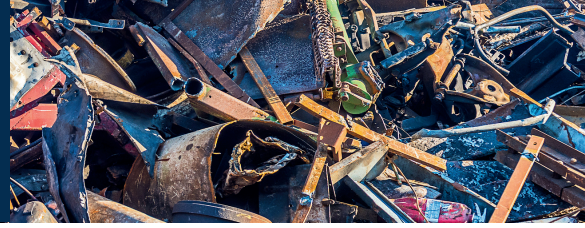
Before you begin, review the [Lillooet Landfill Bylaw](#):

- What materials are accepted
- What materials are prohibited

### Step 2. Remove Recyclables and Hazardous Waste

Materials	Where to Take It	Cost
Appliances	Lillooet Landfill – after the scale	No Cost
Electronics	Lillooet Landfill – Recycle Area - before the scale	No Cost
Engine	Not accepted	-
Metal / Frame / Chassis	Lillooet Landfill – after the scale	Fees Apply
Tires	Lillooet Landfill – after the scale	Fees Apply
	Automotive Shop	No Cost
Used Oil / Containers /	Lillooet Landfill – Recycle Area - before the scale	No Cost
Other	<a href="#">Lillooet Landfill</a>	Varies

# Recreational Vehicle (RV) Disposal: Lillooet Landfill & Recycling Centre



## Step 3. Drain all fluids

All fluids must be safely removed and properly disposed.

Accepted at no cost at the landfill:

- Used oil
- Oil filters
- Oil containers
- Antifreeze

## Step 4. Dismantle the RV into smaller parts

Maximum recommended size:

Length: No more than 2.5 metres

Width: No more than 3.5 metres

## Step 5. Notify the landfill

Before bringing your RV

- Contact the Lillooet Landfill
- Confirm that:
  - All recyclables have been removed
  - All hazardous materials have been removed.

For more information, visit  
[slrd.bc.ca/lovethisplace/LLF](http://slrd.bc.ca/lovethisplace/LLF)

Contact us at [utilities@slrd.bc.ca](mailto:utilities@slrd.bc.ca)