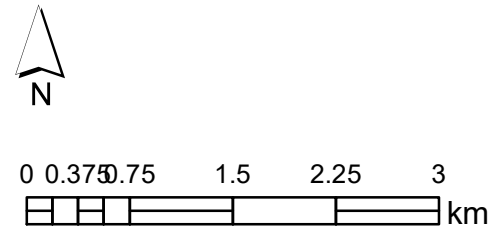
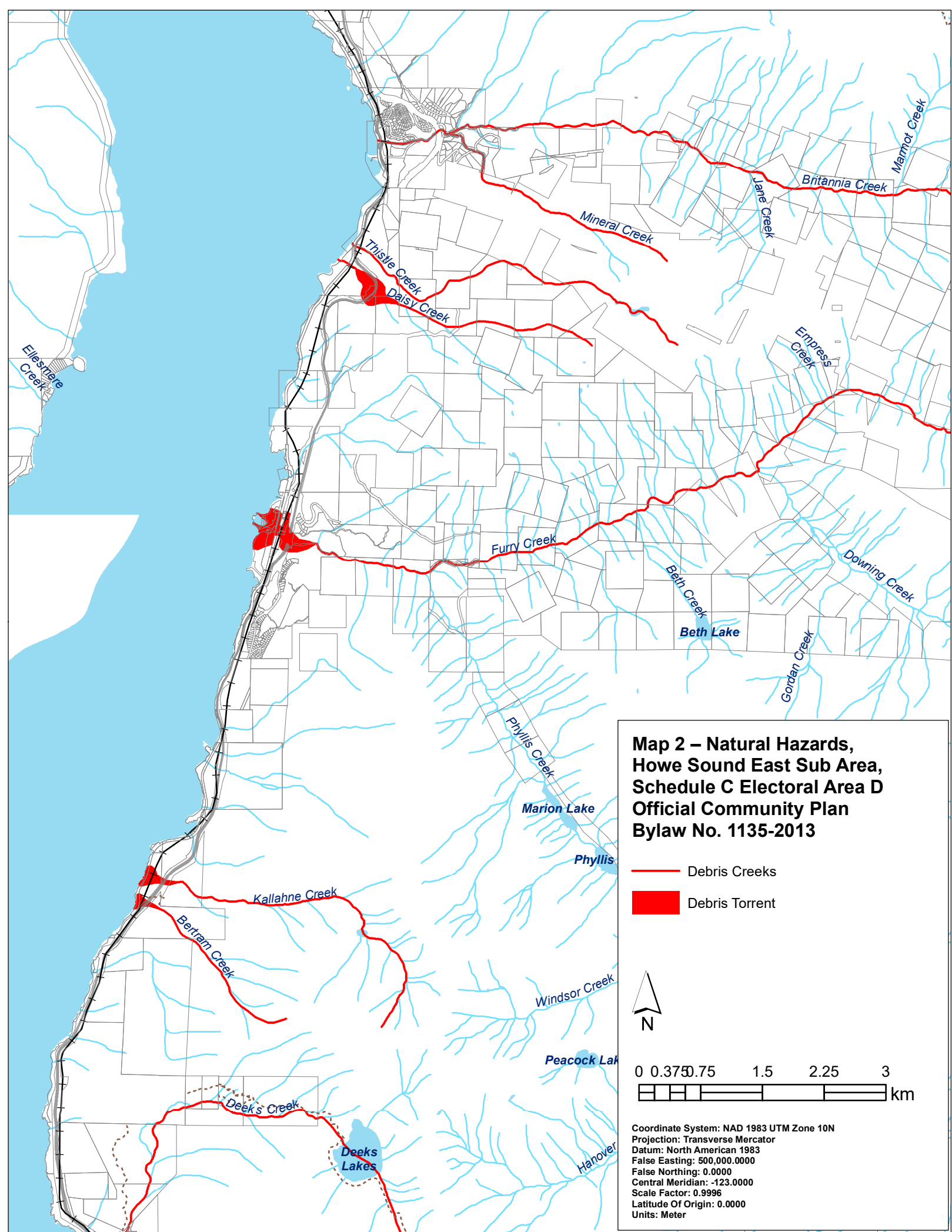


**Map 1 – Land Use Designations,  
Howe Sound East Sub Area,  
Schedule C Electoral Area D  
Official Community Plan Bylaw  
No. 1135-2013**

- SF, Single Family Residential
- PC, Planned Community
- MR, Mixed Residential
- RR, Rural Residential
- CC, Community Commercial
- TC, Tourist Commercial
- I&C, Institutional and Community
- M, Industrial
- CTF, Community Treatment Facility
- CWP, Community Watershed Protection
- FM, Flood Management
- RM, Resource Management
- OS, Open Space
- Pk, Park

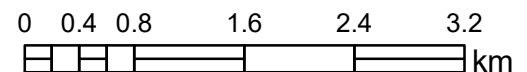


Coordinate System: NAD 1983 UTM Zone 10N  
Projection: Transverse Mercator  
Datum: North American 1983  
False Easting: 500,000.0000  
False Northing: 0.0000  
Central Meridian: -123.0000  
Scale Factor: 0.9996  
Latitude Of Origin: 0.0000  
Units: Meter

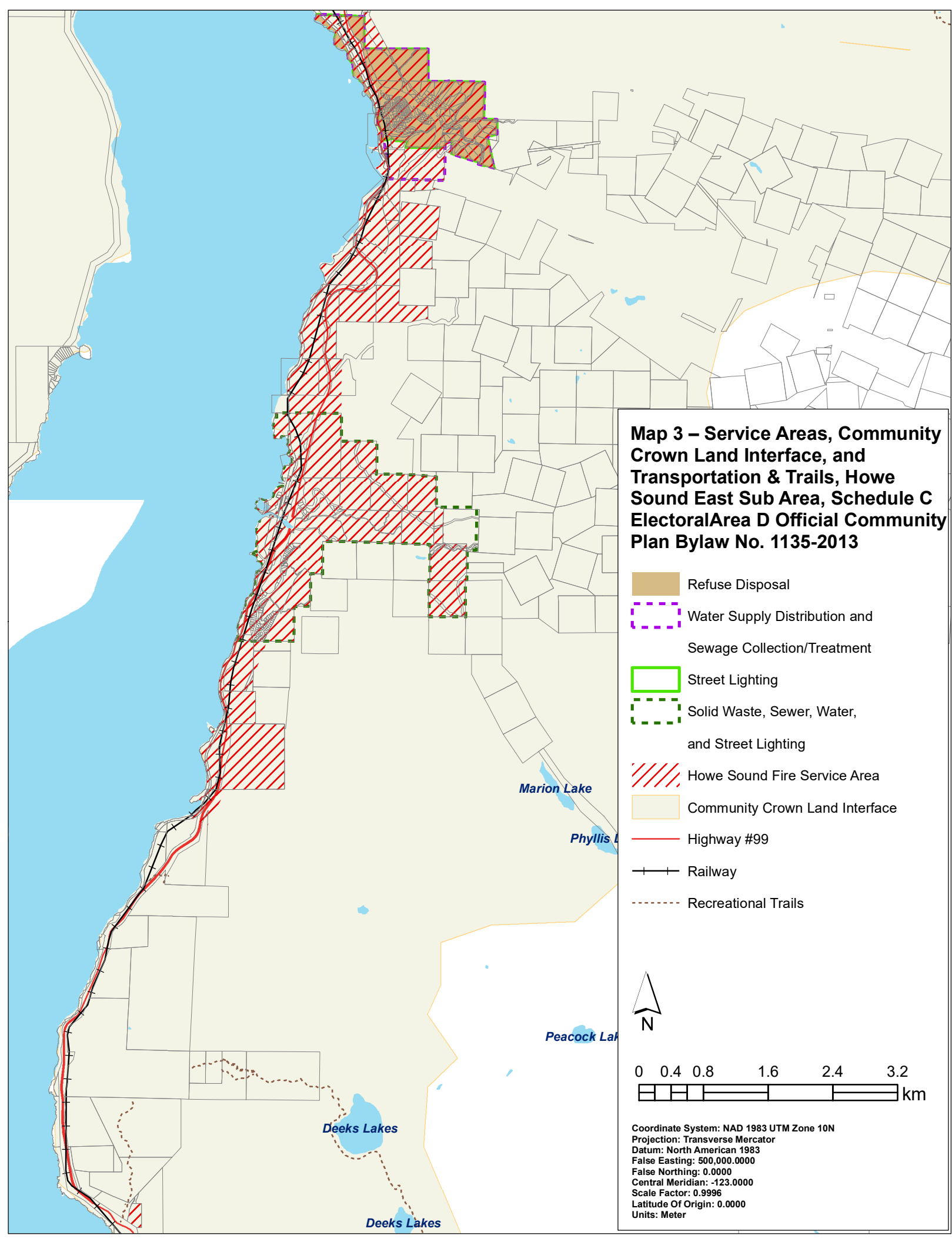


# **Map 3 – Service Areas, Community Crown Land Interface, and Transportation & Trails, Howe Sound East Sub Area, Schedule C Electoral Area D Official Community Plan Bylaw No. 1135-2013**

-  Refuse Disposal
-  Water Supply Distribution and Sewage Collection/Treatment
-  Street Lighting
-  Solid Waste, Sewer, Water, and Street Lighting
-  Howe Sound Fire Service Area
-  Community Crown Land Interface
-  Highway #99
-  Railway
-  Recreational Trails



Coordinate System: NAD 1983 UTM Zone 10N  
 Projection: Transverse Mercator  
 Datum: North American 1983  
 False Easting: 500,000.0000  
 False Northing: 0.0000  
 Central Meridian: -123.0000  
 Scale Factor: 0.9996  
 Latitude Of Origin: 0.0000  
 Units: Meter



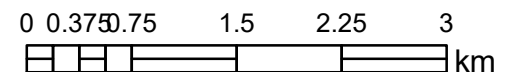
**Map 4 – Aggregate  
Resources, Howe Sound  
East Sub Area, Schedule C  
Electoral Area D Official  
Community Plan Bylaw No.  
1135-2013**

**Aggregate Pit Type**

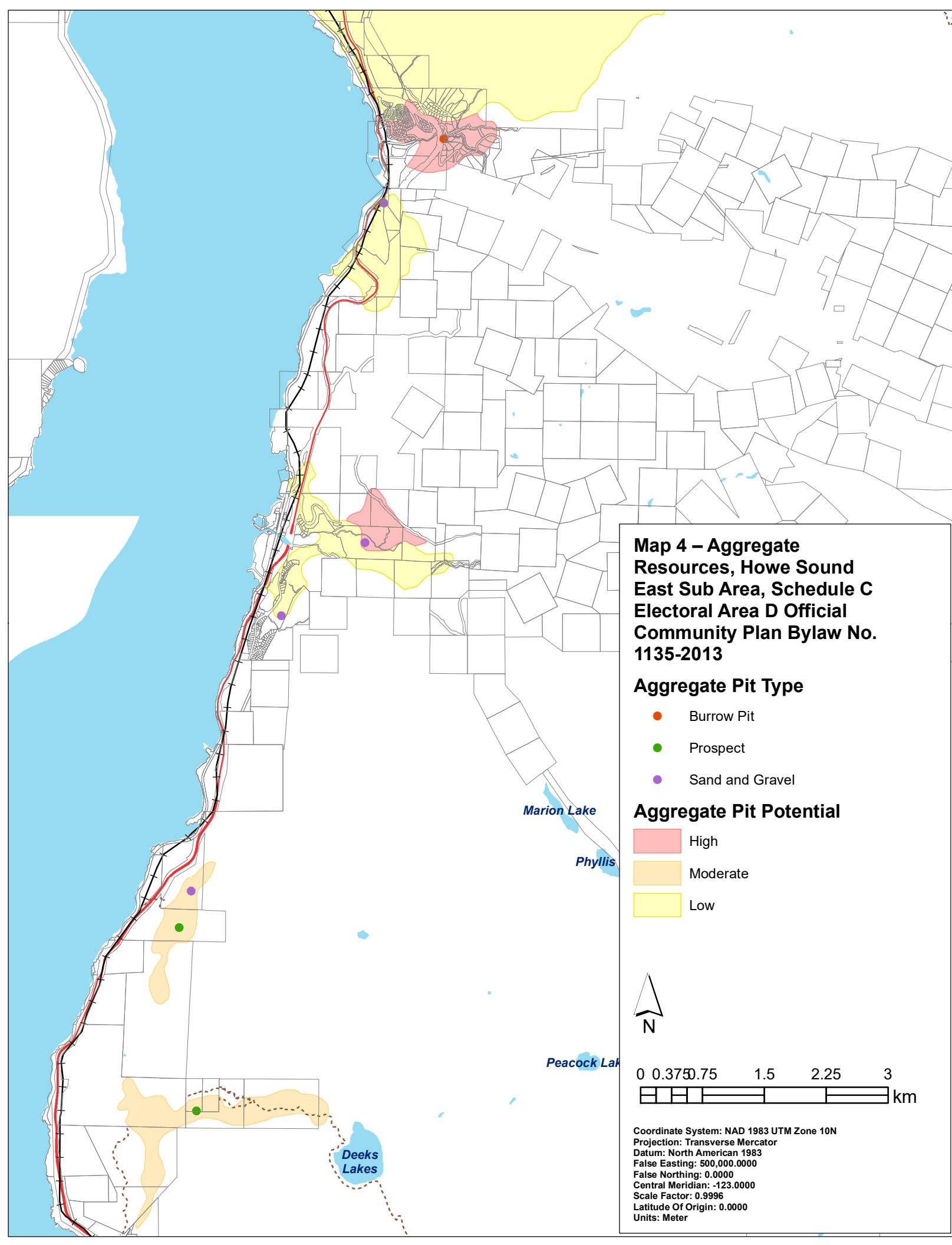
- Burrow Pit
- Prospect
- Sand and Gravel

**Aggregate Pit Potential**

- High
- Moderate
- Low



Coordinate System: NAD 1983 UTM Zone 10N  
Projection: Transverse Mercator  
Datum: North American 1983  
False Easting: 500,000.0000  
False Northing: 0.0000  
Central Meridian: -123.0000  
Scale Factor: 0.9996  
Latitude Of Origin: 0.0000  
Units: Meter





**Map 5 – Wildlife and Old Growth Management Area, Howe Sound  
East Sub Area, Schedule C  
Electoral Area D Official  
Community Plan Bylaw  
No. 1135-2013**


 Old Growth Management Areas

**Ungulate Winter Range**

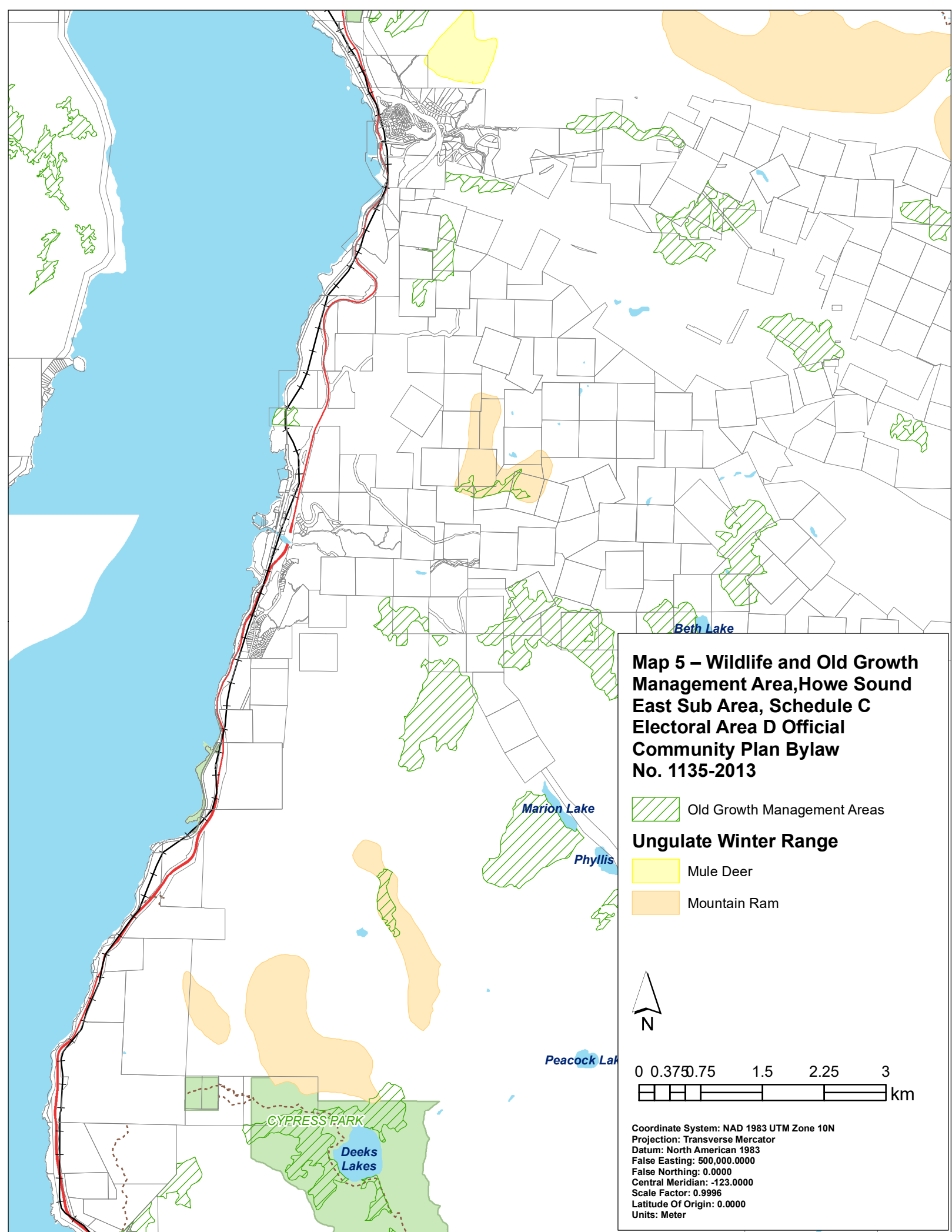
 Mule Deer

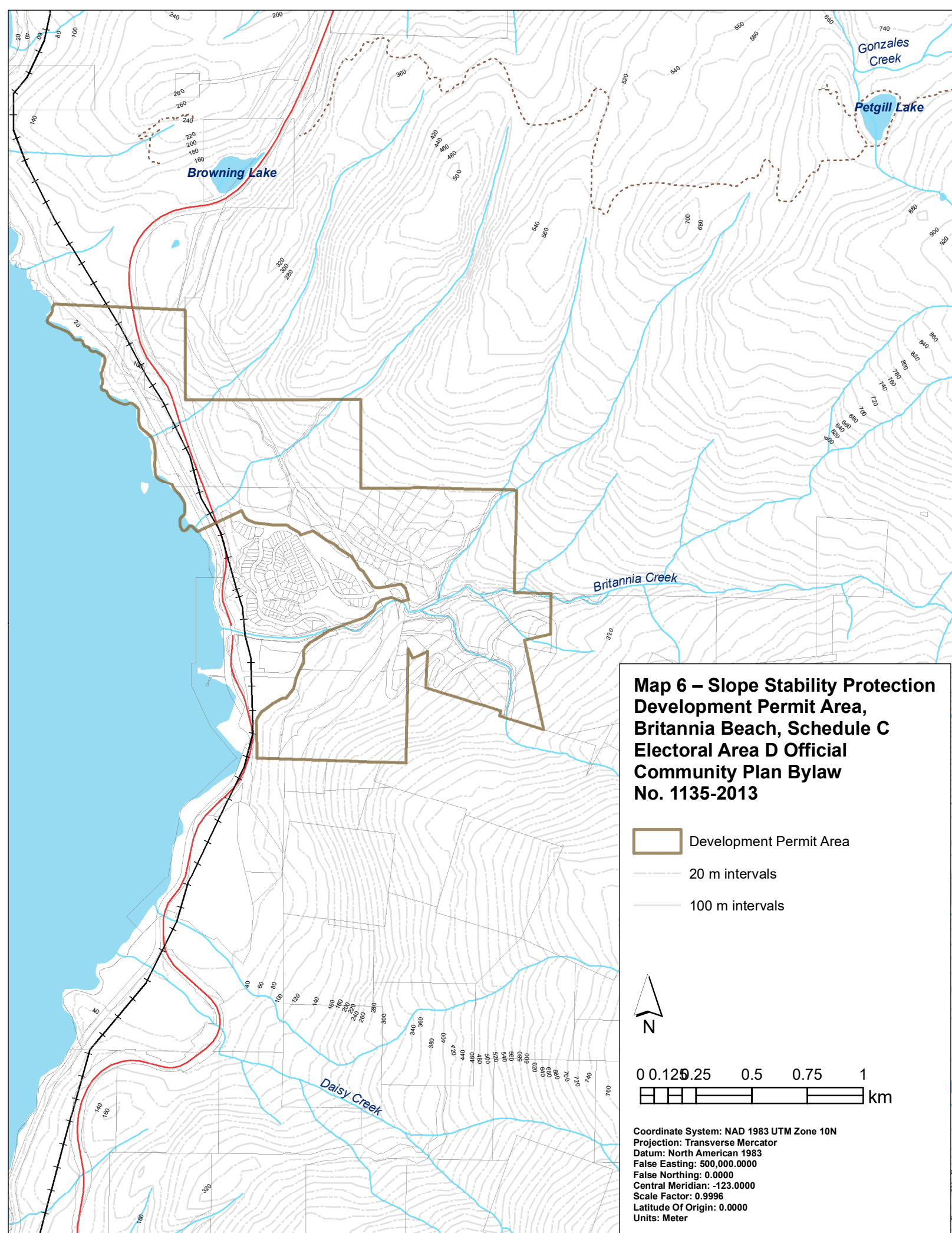
 Mountain Ram






0 0.375 0.75 1.5 2.25 3  
 km

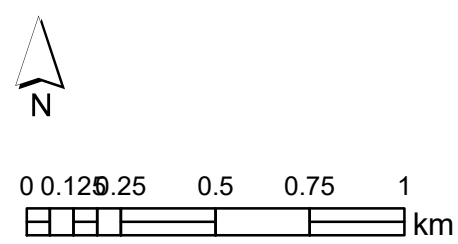
Coordinate System: NAD 1983 UTM Zone 10N  
Projection: Transverse Mercator  
Datum: North American 1983  
False Easting: 500,000.0000  
False Northing: 0.0000  
Central Meridian: -123.0000  
Scale Factor: 0.9996  
Latitude Of Origin: 0.0000  
Units: Meter





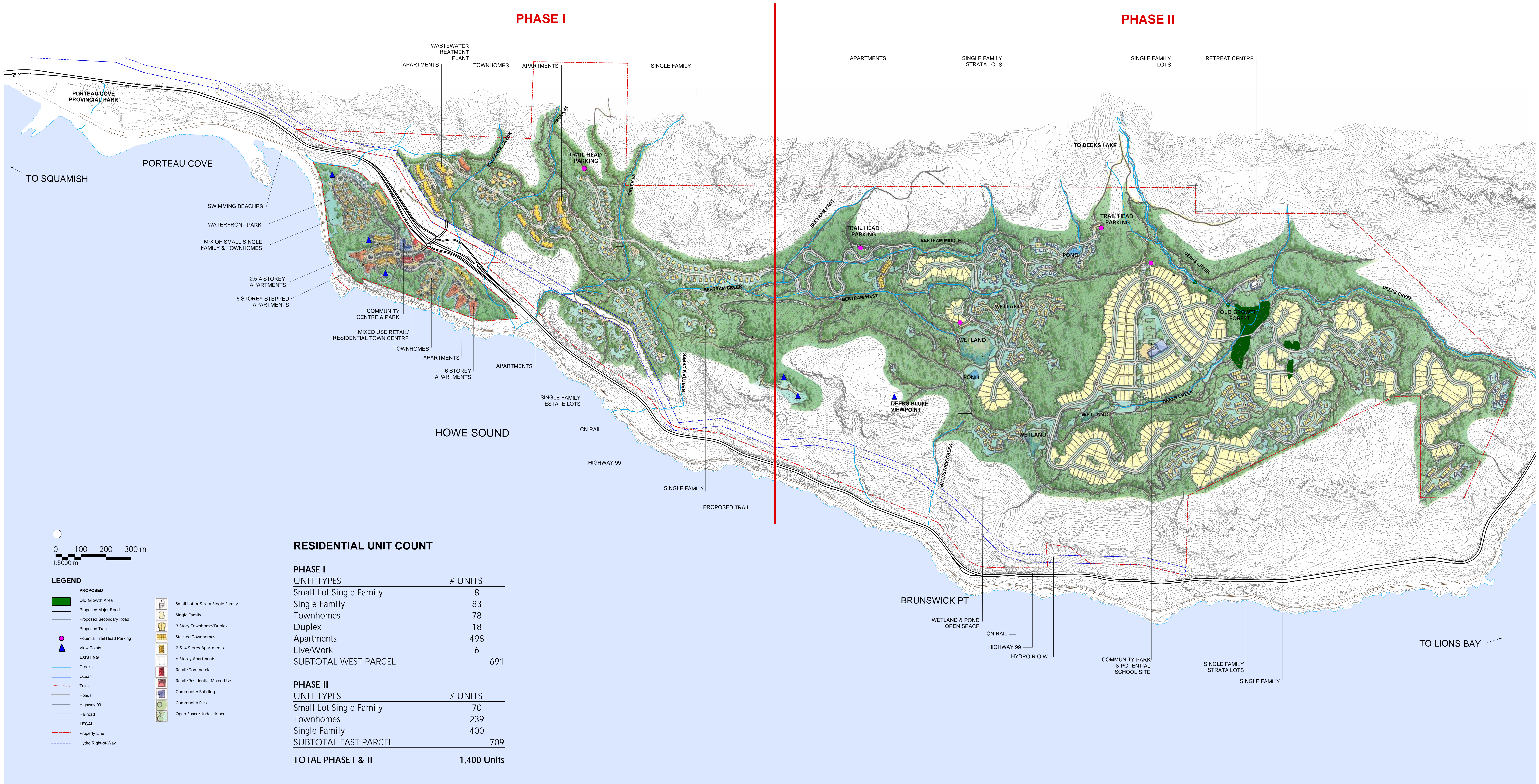
**Map 6 – Slope Stability Protection  
Development Permit Area,  
Britannia Beach, Schedule C  
Electoral Area D Official  
Community Plan Bylaw  
No. 1135-2013**

-  Development Permit Area
-  20 m intervals
-  100 m intervals



Coordinate System: NAD 1983 UTM Zone 10N  
Projection: Transverse Mercator  
Datum: North American 1983  
False Easting: 500,000.0000  
False Northing: 0.0000  
Central Meridian: -123.0000  
Scale Factor: 0.9996  
Latitude Of Origin: 0.0000  
Units: Meter





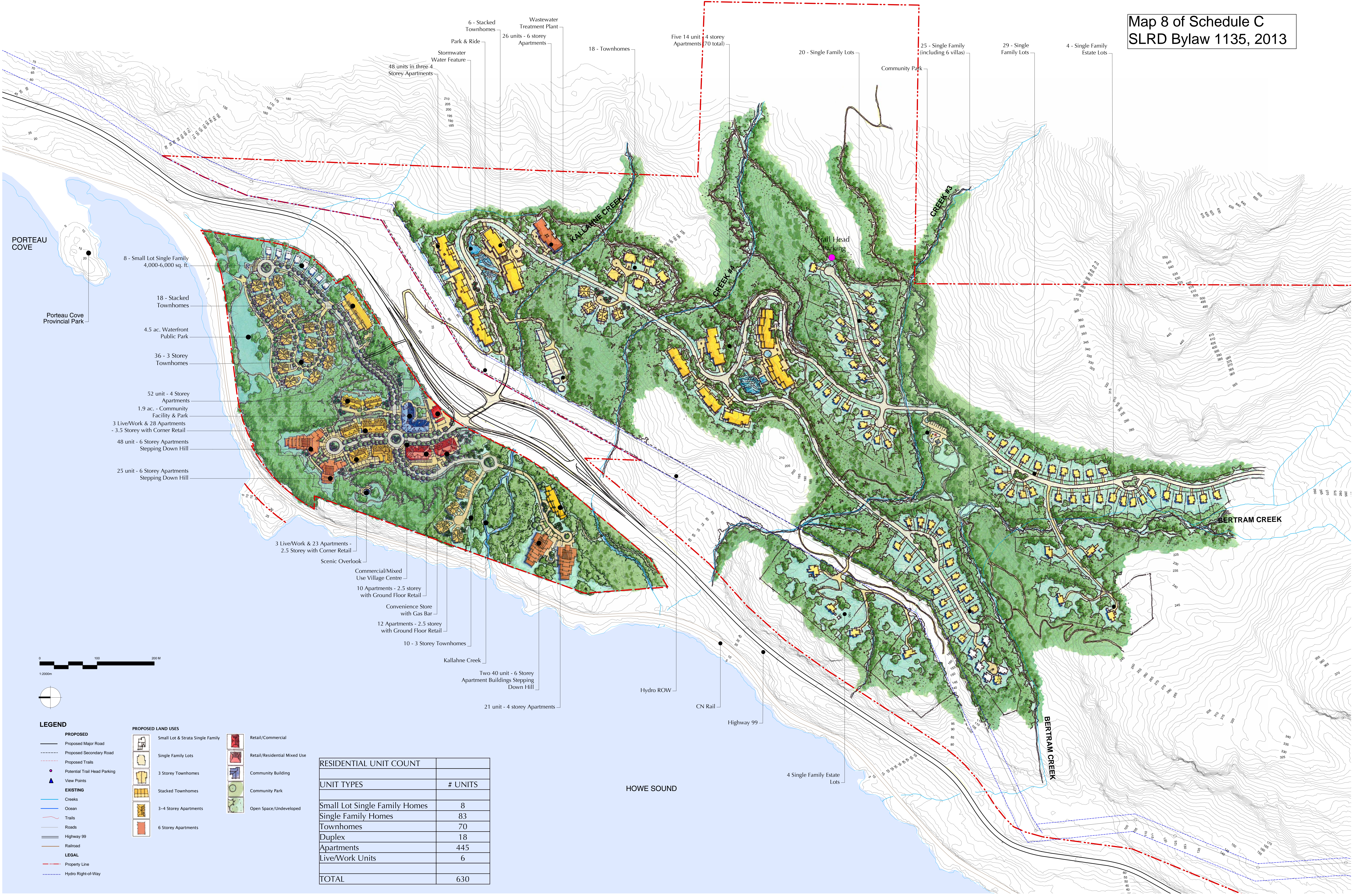
# Conceptual Site Plan



Porteau Cove Development

PWL Partnership Landscape Architects  
Webster Engineering  
Pottinger Gaherty Environmental  
Thurber Engineering  
Bennett & Associates  
Hudema Consulting  
Rositch & Hemphill Architects





# Illustrative Plan - Phase I

## Porteau Cove Development

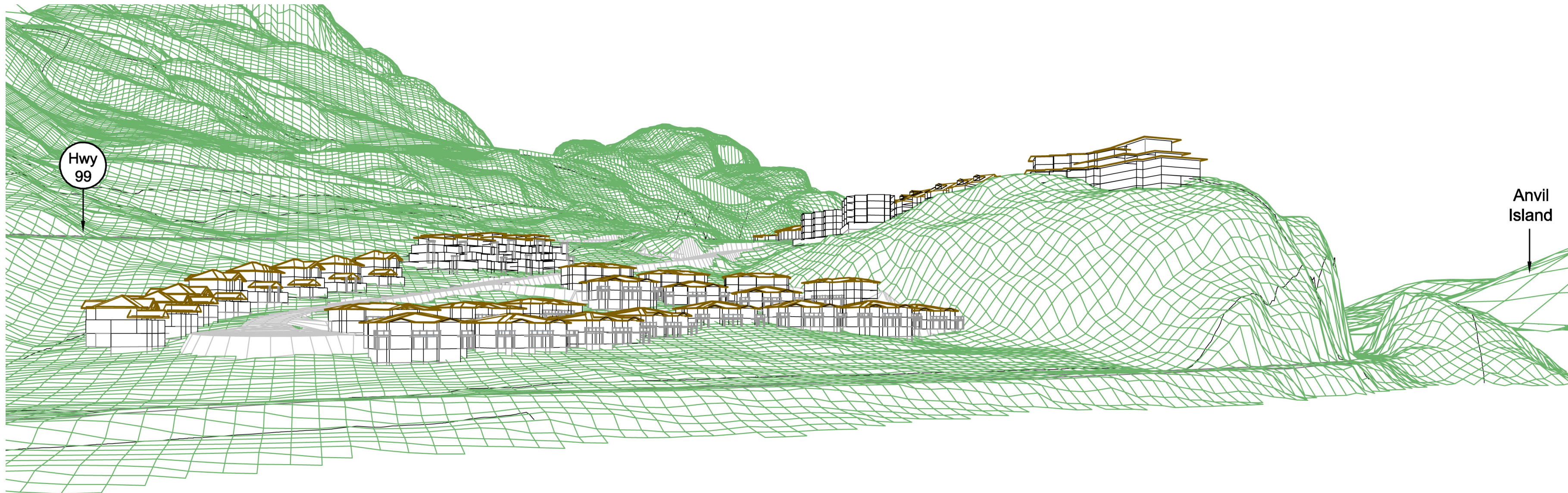
Revised  
December 12,  
2005

PWL Partnership Landscape Architects  
Webster Engineering  
Pottinger Gaherty Environmental  
Thurber Engineering  
Bennett & Associates  
Hudema Consulting  
Rositch Hemphill Architects





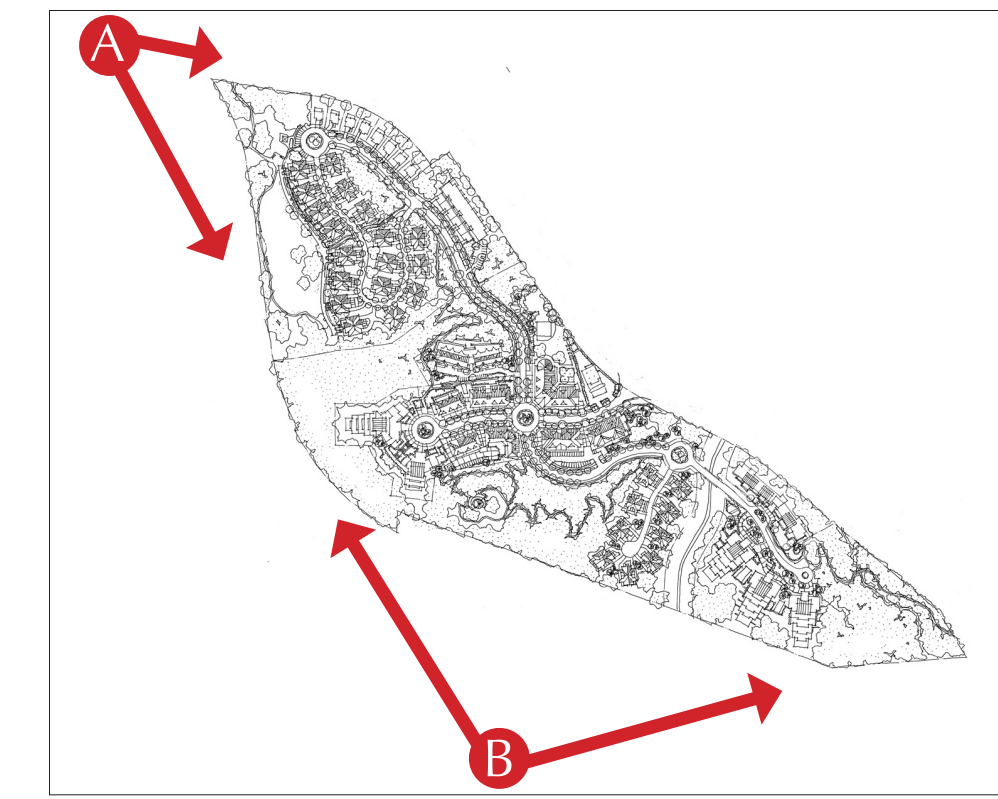
A: Before



A: Model



A: After

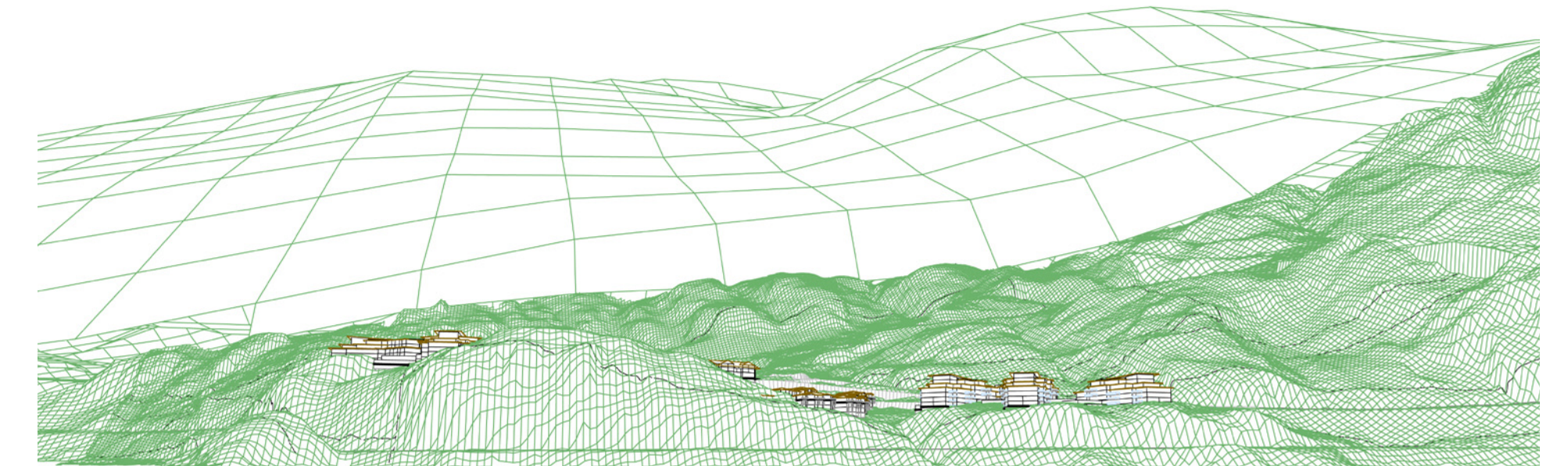


Key Plan

Map 9 of Schedule C  
SLRD Bylaw 1135, 2013



B: Before



B: Model



B: After

## 3-D Models

August 2,  
2005



## Porteau Cove Development

PWL Partnership Landscape Architects  
Webster Engineering  
Pottinger Caherty Environmental  
Thurber Engineering  
Bennett & Associates  
Hudema Consulting  
Rositch & Hemphill Architects



# Map 10 of Schedule C SLRD Bylaw 1135, 2013



## Parks, Open Space & Trails

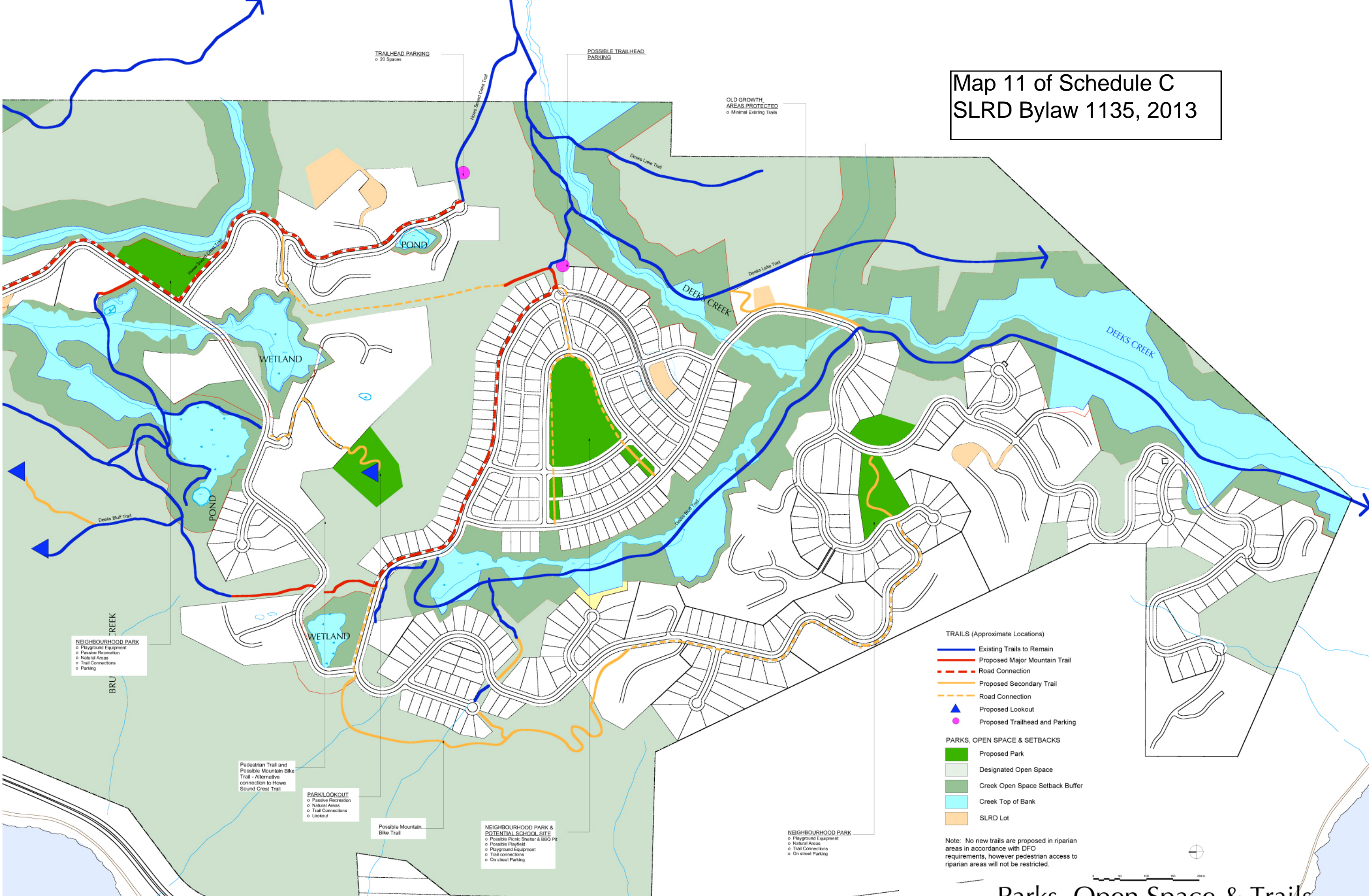
Porteau Cove Development

DRAFT  
July 13, 2006

PWL Partnership Landscape Architects  
Webster Engineering  
Pottinger Gaherty Environmental  
Thurber Engineering  
Bennett & Associates  
Hudema Consulting  
Rosich & Hemphill Architects



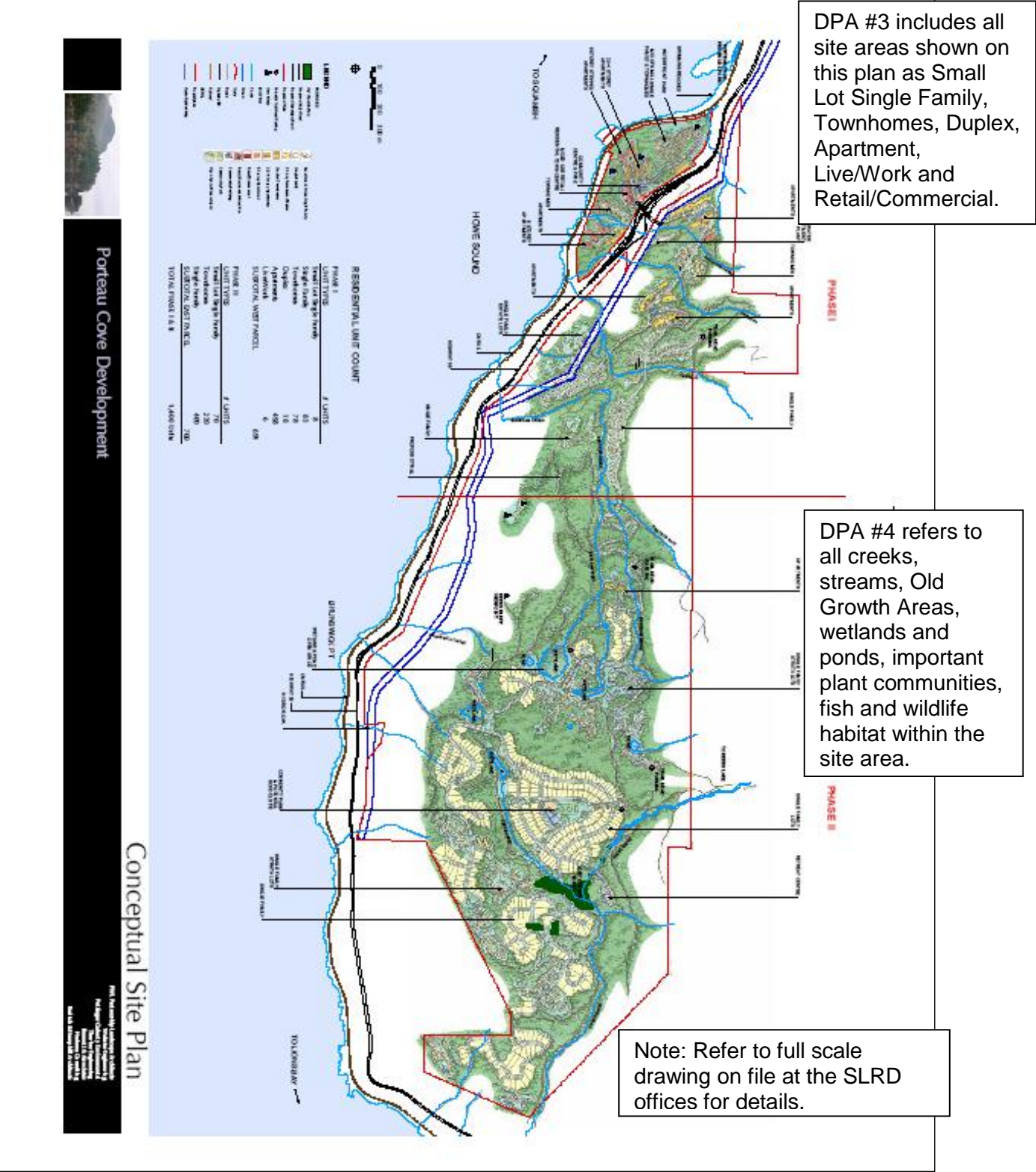
Map 11 of Schedule C  
SLRD Bylaw 1135, 2013



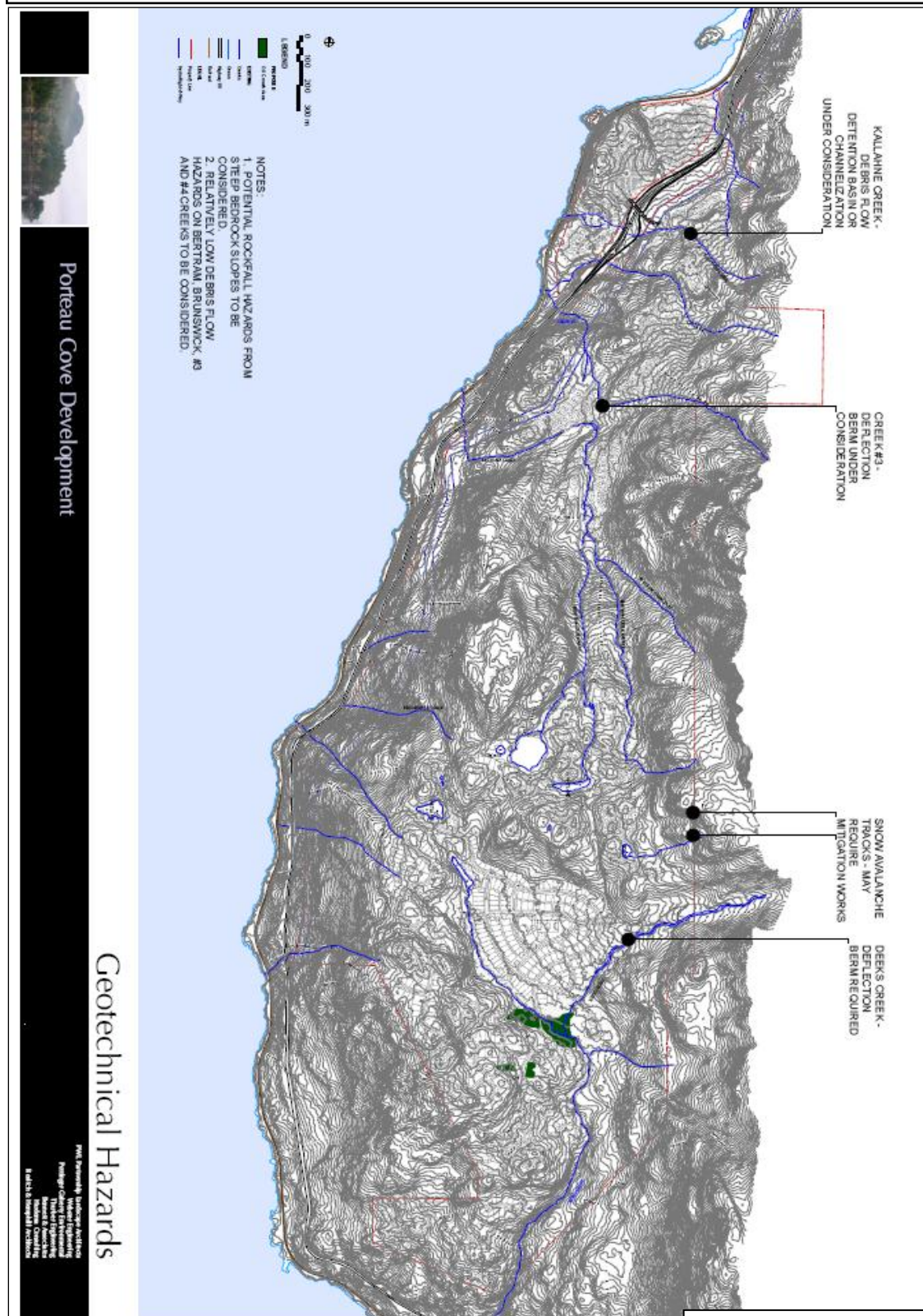
Parks, Open Space & Trails



Map 12 of Schedule C, SLRD Bylaw 1135, 2013  
PORTEAU COVE DEVELOPMENT PERMIT AREAS #3 and #4



Map 13 of Schedule C, SLRD Bylaw 1135, 2013  
 PORTEAU COVE DEVELOPMENT PERMIT AREA #5 (Hazard Lands)



Note: Refer to full scale drawing on file at the SLRD offices for details.



Map 14 of Schedule C, SLRD Bylaw 1135, 2013  
PORTEAU COVE DEVELOPMENT PERMIT AREA #5 (Steep Slopes)

Development Permit Area #5 includes all areas indicated on this plan with slopes greater than 20%.



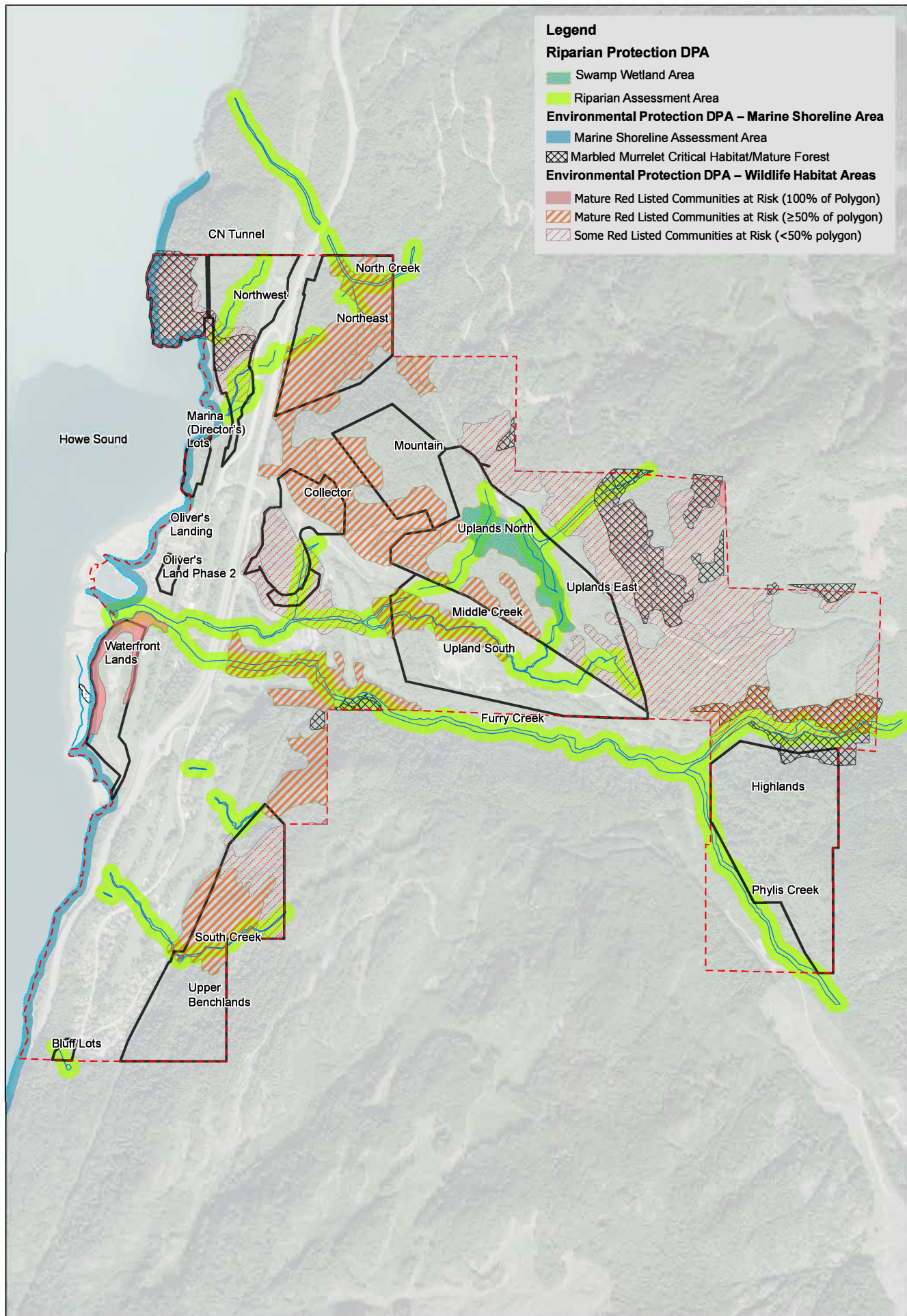
Note: Refer to full scale drawing on file at the SLRD offices for details.

# Porteau Cove Development

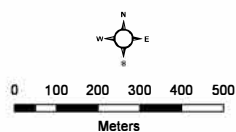
## Slope Analysis

**PMI** Partnership Leadership Academy  
Woburn, England  
Postings: 6 days per 5 weeks at a  
Thames Engineering  
Bernard & Associates  
Hudson Consulting





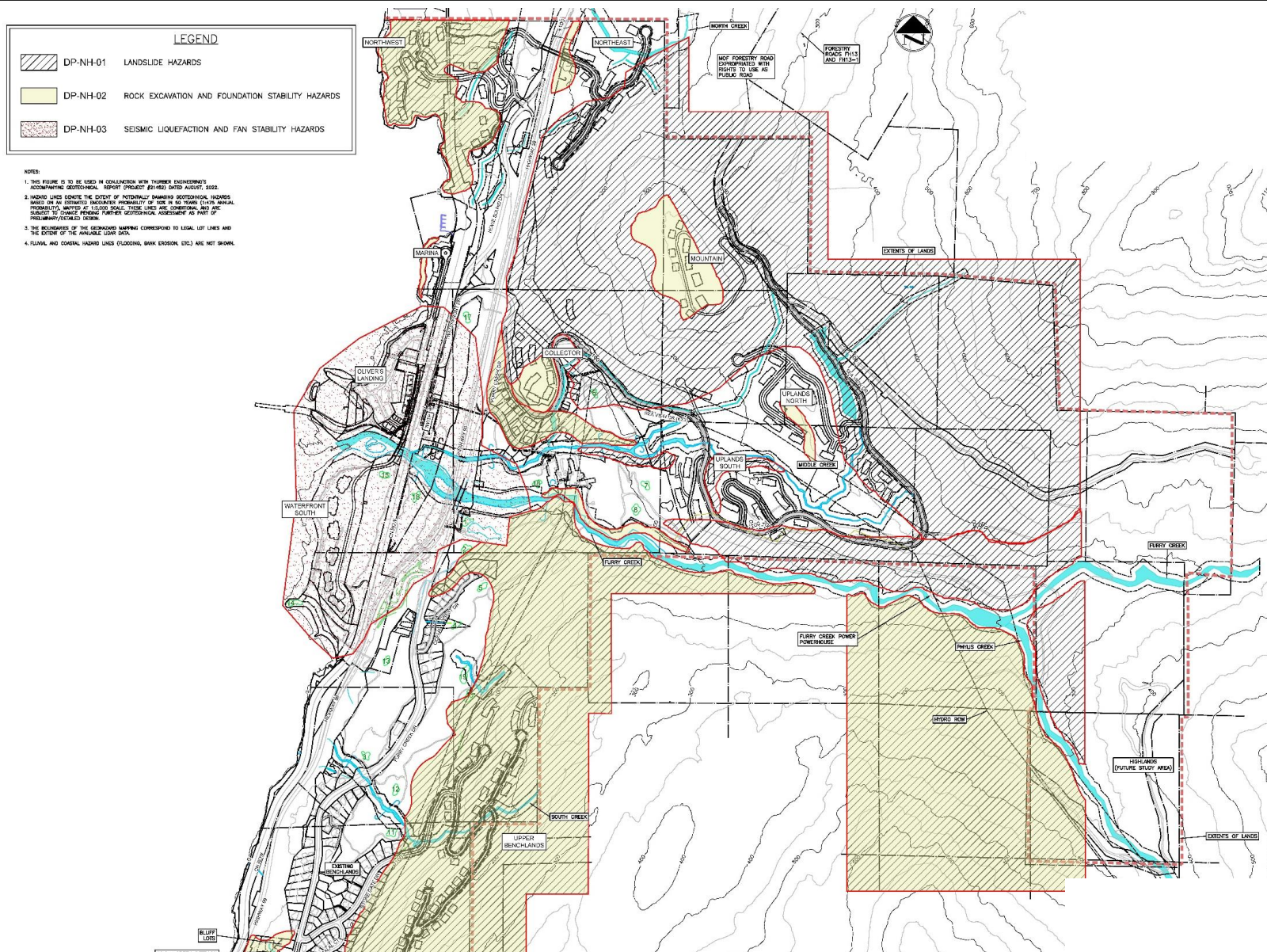
GIS Cartographer: Nicole Church  
 Date: July 21, 2020  
 CERF File#: 928-01-02-01  
 Projection: UTM Zone 10N NAD83  
 Orthophoto/Data: ESR/BCC Gov  
 High Water Marks are not from survey. For reference only and not to be used for development.  
 Riparian setback locations to be determined following completion of legal survey of high water mark locations.



**Map 15 – Riparian Protection and Environmental Protection Development Permit Areas**

Furry Creek Neighborhood  
 Schedule C, Electoral Area D  
 Official Community Plan Bylaw 1135-2013





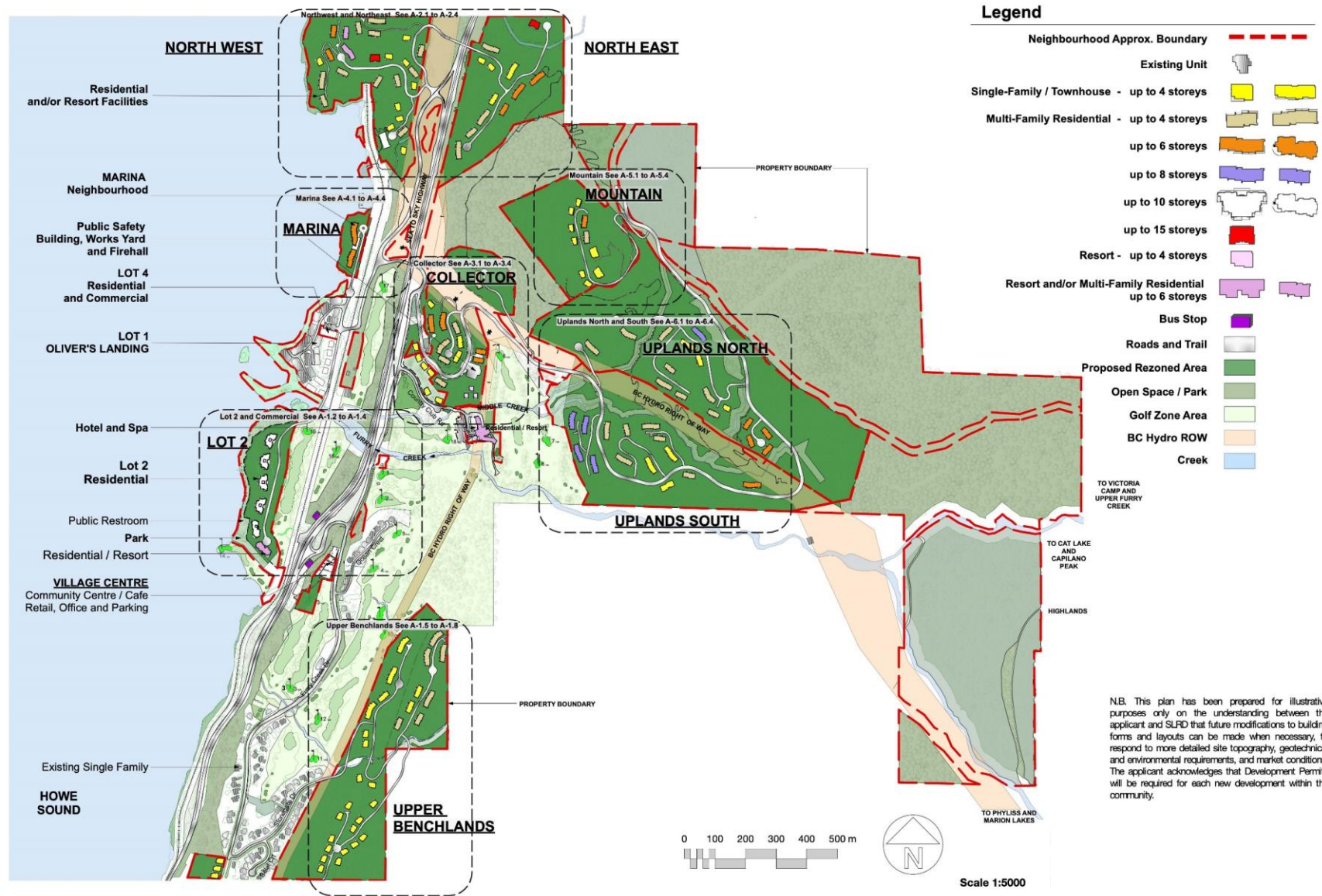
## Map 16A – Natural Hazards Protection Development Permit Areas (1-3)

Furry Creek Neighbourhood

Schedule C Electoral Area D Official Community Plan Bylaw No. 1135-2013





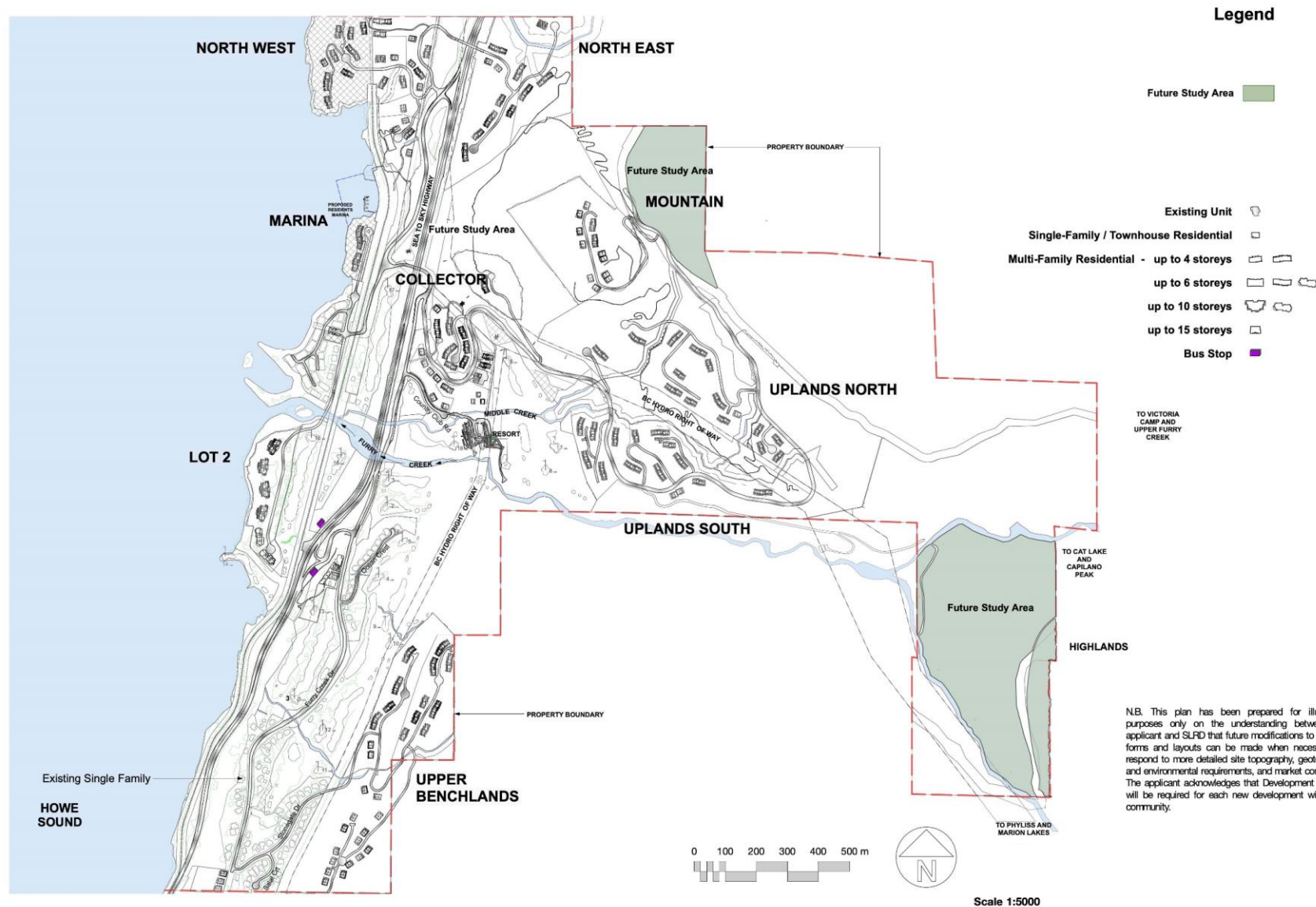


## Map 17 – Illustrative Site Plan

Furry Creek Neighbourhood

Schedule C Electoral Area D Official Community Plan Bylaw No. 1135-2013





## Map 18 – Future Study Areas

Furrow Creek Neighbourhood

Schedule C Electoral Area D Official Community Plan Bylaw No. 1135-2013