

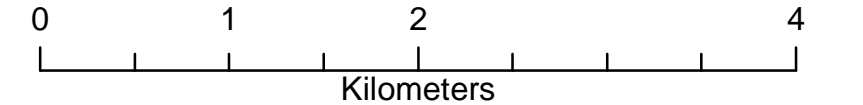
**Squamish - Lillooet
Regional District
Electoral Area A**

**Community Wildfire
Protection Plan**

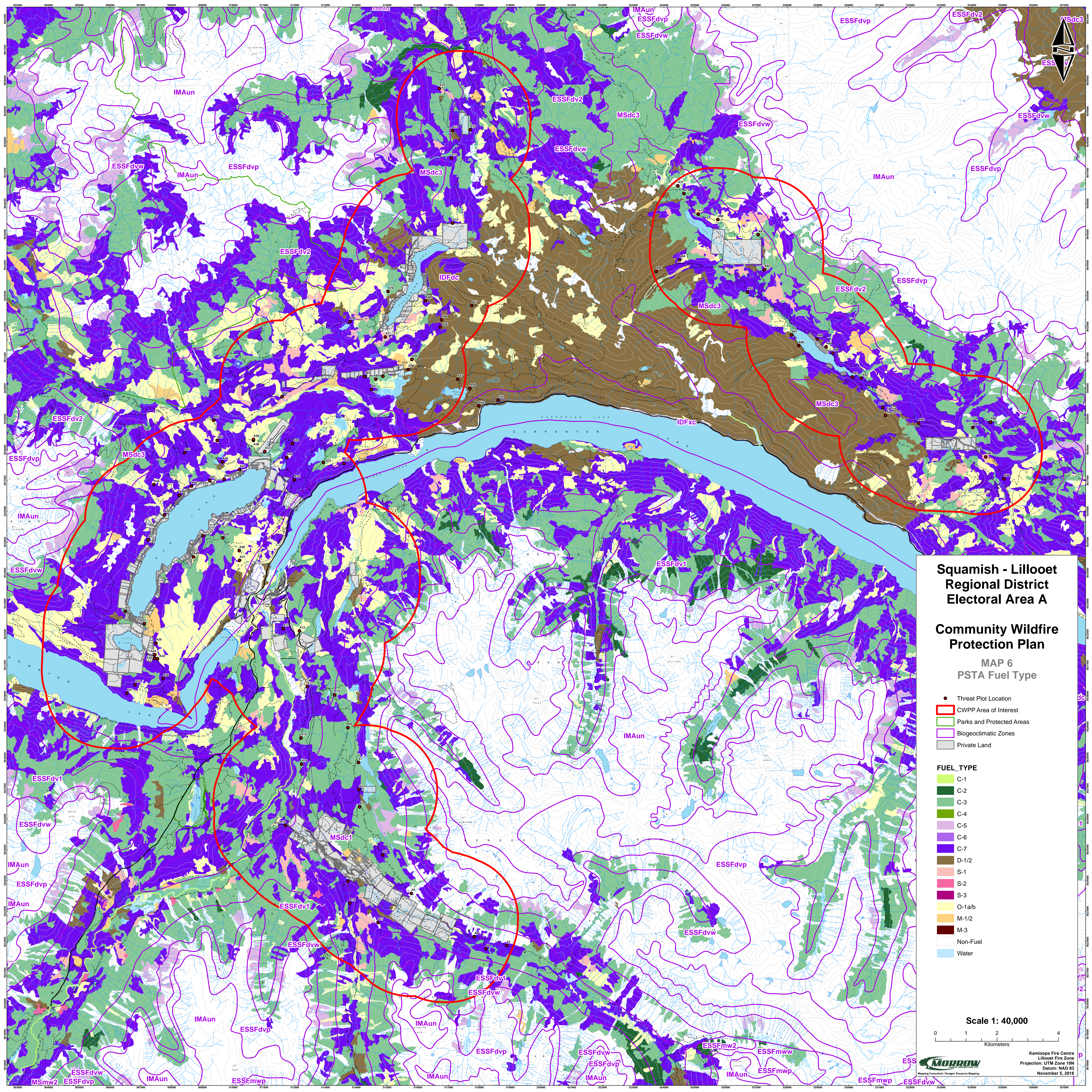
**MAP 5
Fire History**

- CWPP Boundary
- Private Land
- Parks and Protected Areas
- Woodlot - ACTIVE
- ★ Current Fire Points
- ★ Historical Fire Points
- Current Fire Polygon
- Historical Fire Polygon

Scale 1: 40,000



Kamloops Fire Centre
Lillooet Fire Zone
Projection: UTM Zone 10N
Datum: NAD 83
November 5, 2018



**Squamish - Lillooet
Regional District
Electoral Area A**

**Community Wildfire
Protection Plan**

**MAP 6
PSTA Fuel Type**

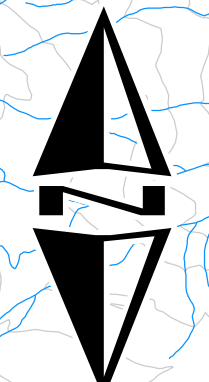
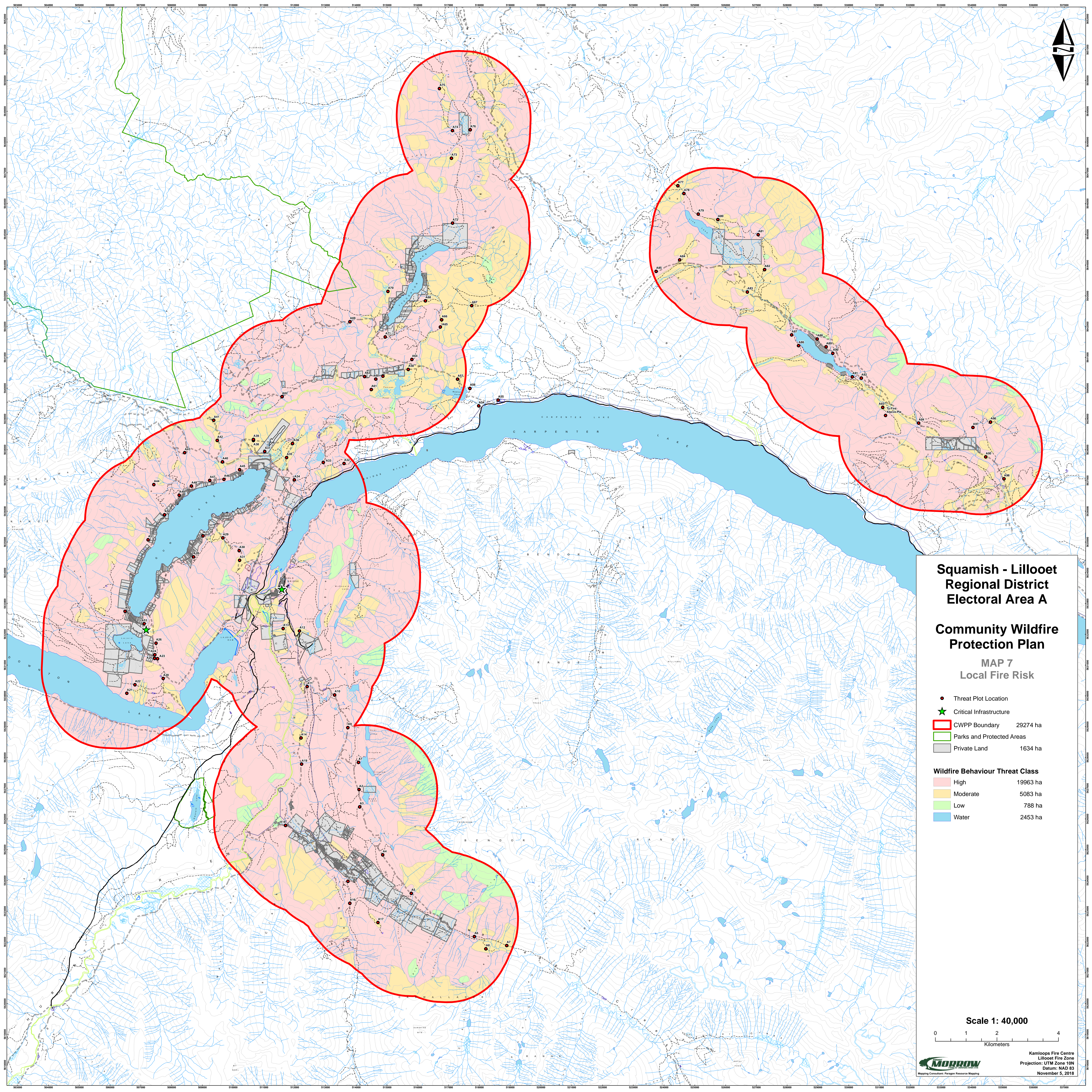
- Threat Plot Location
- ▭ CWPP Area of Interest
- ▭ Parks and Protected Areas
- ▭ Biogeoclimatic Zones
- ▭ Private Land

FUEL_TYPE

C-1
C-2
C-3
C-4
C-5
C-6
C-7
D-1/2
S-1
S-2
S-3
O-1ab
M-1/2
M-3
Non-Fuel
Water

Scale 1: 40,000

0 1 2 4
Kilometers



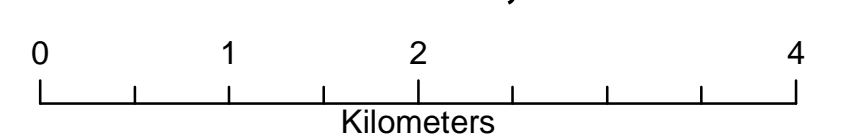
**Squamish - Lillooet
Regional District
Electoral Area A**

**Community Wildfire
Protection Plan**

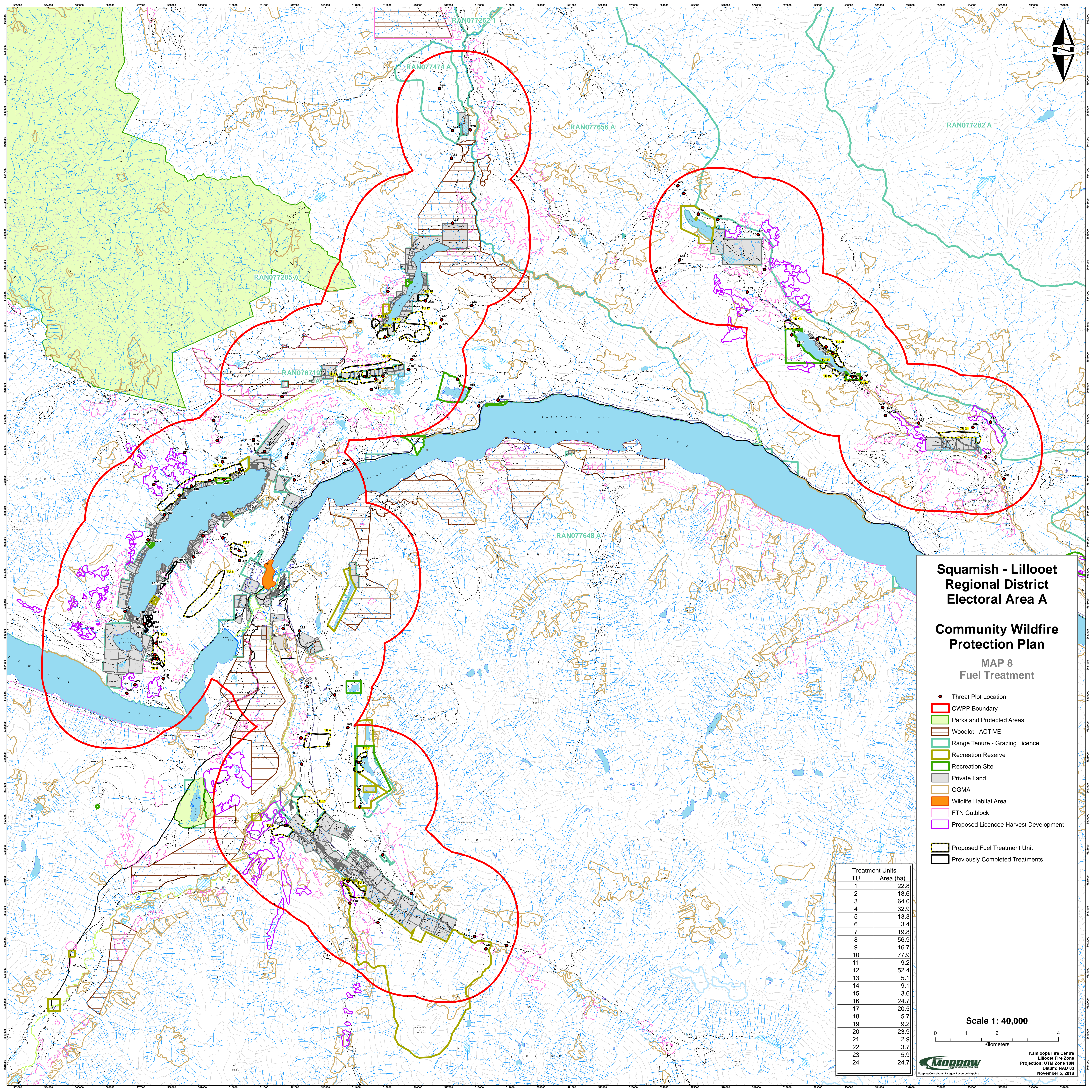
**MAP 7
Local Fire Risk**

- Threat Plot Location
 - ★ Critical Infrastructure
 - ▭ CWPP Boundary 29274 ha
 - ▭ Parks and Protected Areas
 - ▭ Private Land 1634 ha
-
- Wildfire Behaviour Threat Class**
- ▭ High 19963 ha
 - ▭ Moderate 5083 ha
 - ▭ Low 788 ha
 - ▭ Water 2453 ha

Scale 1: 40,000



Kamloops Fire Centre
Lillooet Fire Zone
Projection: UTM Zone 10N
Datum: NAD 83
November 5, 2018



**Squamish - Lillooet
Regional District
Electoral Area A**

**Community Wildfire
Protection Plan**

**MAP 8
Fuel Treatment**

- Threat Plot Location
- ▭ CWPP Boundary
- ▭ Parks and Protected Areas
- ▭ Woodlot - ACTIVE
- ▭ Range Tenure - Grazing Licence
- ▭ Recreation Reserve
- ▭ Recreation Site
- ▭ Private Land
- ▭ OGMA
- ▭ Wildlife Habitat Area
- ▭ FTN Cutblock
- ▭ Proposed Licence Harvest Development

- ▭ Proposed Fuel Treatment Unit
- ▭ Previously Completed Treatments

TU	Area (ha)
1	22.8
2	18.6
3	64.0
4	32.9
5	13.3
6	3.4
7	19.8
8	56.9
9	16.7
10	77.9
11	9.2
12	52.4
13	5.1
14	9.1
15	3.6
16	24.7
17	20.5
18	5.7
19	9.2
20	23.9
21	2.9
22	3.7
23	5.9
24	24.7

