



# Budget 2014

Community Fact Sheet for Residents of Electoral Area C & Pemberton




**Your  
PROPERTY TAXES  
are DUE  
July 2, 2014**

## Why is this relevant to you? Because it's your money.

**Rural residents** receive their property tax bill from the Province. If you live in Electoral Area C (Pemberton Fringe; Pemberton North; Pemberton Meadows; the Mount Currie – D'Arcy corridor, including Walkerville, Reid Road, Ivey Lake Estates, Owl Ridge, Poole Creek, Devine, and Birken; Lillooet Lake Estates; WedgeWoods), the SLRD provides all of your local and regional government services. The Province issues your tax notice based on a budget and tax rates for: services provided by the SLRD and as determined by the SLRD; and the Province for such things as school taxes, hospitals, policing, roads, etc. You are represented at the Regional District level by Electoral Area C Director, Susie Gimse.

**Municipal residents** receive their property tax bill from the Village of Pemberton. If you live in the Village of Pemberton, the SLRD provides a range of government services for you, including region-wide services like waste management and transit planning, as well as "sub-regional" services that jointly benefit Pemberton and Area C residents, like funding the Community Centre and Library, trails and waste transfer. The Village collects money for these services on the Regional District's behalf, based on a budget and tax rates provided by the SLRD. You are represented at the Regional District level by Pemberton Councillor, Ted Craddock.



**Squamish-Lillooet  
Regional District**  
1350 Aster Street, Pemberton,  
BC, V0N 2L0  
(604) 894-6371  
info@slrd.bc.ca  
www.slrd.bc.ca



## What does the SLRD do for you?

**Regional districts were created to fill a gap** that neither municipalities nor the Province were well-suited to address: provide basic services, planning and political accountability to rural areas. Regional districts also provide a forum for sub-regional and regional cooperation amongst jurisdictions. With this, regional districts ensure that rural residents contribute their fair share to the municipal services they use, such as fire services.

With the exception of a handful of functions mandated by the Province, the SLRD can only act to provide services that have been specifically established in response to a request from a member jurisdiction or its constituents. It can't force a service or a tax on anyone. Everything is a consensual service. The effectiveness of the organisation depends on cooperation and good relationships amongst the stakeholders at the table.

The Squamish-Lillooet Regional District is a federation of 4 municipalities (District of Lillooet, Village of Pemberton, Resort Municipality of Whistler, District of Squamish) and 4 unincorporated areas (A, B, C, D). All eight member jurisdictions contribute to regional services like solid waste management planning, land use planning, transit planning, treaty advisory committees, and general government.

The SLRD provides sub-regional (sometimes called "shared") services to residents of Electoral Area C and the Village of Pemberton. These include: Recreation Services, the Recreation Commission (grants-in-aid), Pemberton Fire Rescue Service, Pemberton Search and Rescue, the Museum, the Library, Parks and Trails, Television Rebroadcasting, the Pemberton Transfer Station and the Cemetery. Only the Area C Director and the Village of Pemberton Director vote on matters pertaining to the administration and operation of these shared services.

Other sub-regional services include: 9-1-1 Service, Pemberton Valley Transit System, the Regional Growth Strategy, and the Sea to Sky Trail. Residents of the four Electoral Areas also contribute to the cost of SLRD Building Inspection, Civic Addressing, Elections, Community Parks, and Emergency Planning.

The SLRD also serves as local government for residents of Area C, funding services such as dyking and drainage (Walkerville), fire protection (Birken), recreation (Birken), street lighting (D'Arcy), waste transfer (Devine, D'Arcy, Birkenhead Lake, Anderson Lake), and water (D'Arcy, Devine, Pemberton North), etc.

## Did You Know?

**The Squamish Lillooet Regional District** is one of 29 regional districts in the province. It encompasses 16,692 km<sup>2</sup> and is home to 38,171 residents, including First Nations (2011 Census).

At about 5,600 km<sup>2</sup>, Electoral Area C is almost one-third of the SLRD's geographic area. And with 3,512 residents, including 1,708 First Nations, it is also the SLRD's most populous electoral area. Area C is unique in that it's the only rural area in the SLRD whose population matches closely the size of its nearest municipality, with the Village of Pemberton population being 2,380 (2011 Census).

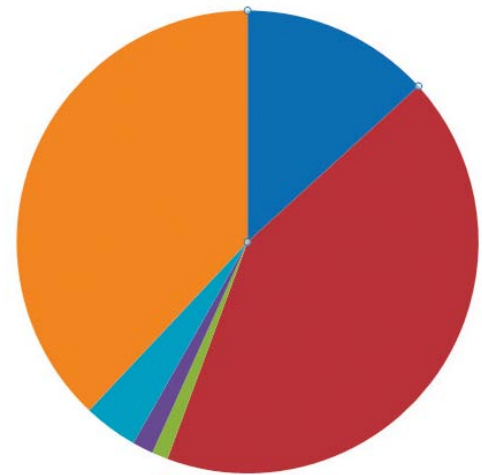
In British Columbia, municipalities occupy only 1.4% of the province's area. Regional districts are unique to BC and many experts have deemed them the best model for providing governance in a province the size of BC. Why?

*Collaboration results in better service through economies of scale.* A regional district provides the model and funding infrastructure to enable smaller municipalities and rural areas, like Pemberton and Area C, to work together to establish services that the jurisdictions could not afford on their own.

*The users pay.* Regional districts are governed by the concept of "fiscal equivalence" – meaning only the residents who benefit from a service pay for the service. You pay for what you get. And no one gets a free ride because of where they live.

*Big picture planning.* Good government is greater than town boundaries. Often, the benefits for many services extend beyond a single jurisdiction. Regional districts enable service areas to be created based on who benefits.

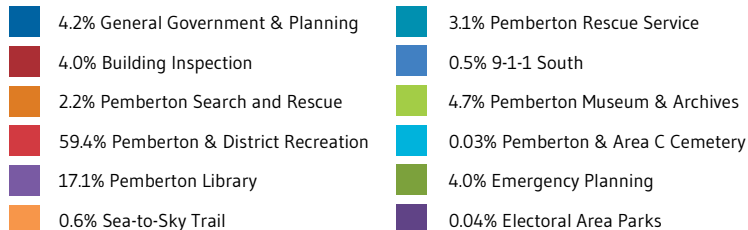
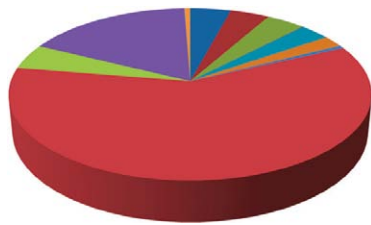
## Where Area C residents' tax money\* goes



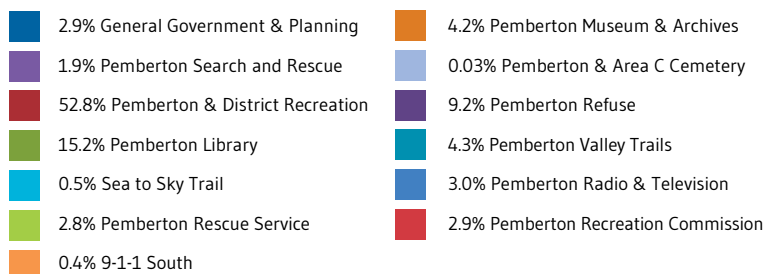
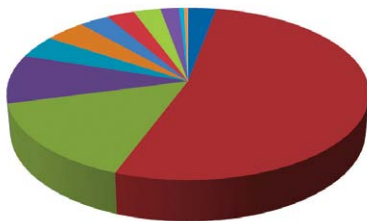
- 13.2% Rural Area Property Tax (Retained by the Province to cover cost of rural roads)
- 42.4% School Tax Residential
- 1.1% Sea to Sky Hospital District
- 1.5% BC Assessment Authority
- 3.8% Police Tax
- 38% Area C SLRD

*\*NOTE: Graphs do not include requisitions for any defined service areas within Area C (Anderson Lake Refuse, Birken Recreation Commission, Birken Fire Protection, D'Arcy Street Lighting, D'Arcy/Devine/Birkenhead Lake Refuse, D'Arcy Water, Devine Water, Pemberton Fire Protection, Pemberton Meadows Fire Protection, Pemberton Heights Fire Protection, Pemberton North Water System, Pemberton Valley Trails, Pemberton Recreation Commission, Pemberton Refuse, Pemberton Television, Walkerville Dyking) Please refer to your tax notice for a detailed breakdown of applicable defined service area charges.*

## Services Area C residents receive from the SLRD\* (Breakdown of the 38%)



## Services Village of Pemberton residents receive from the SLRD



### A detailed breakdown for Village of Pemberton Residents:

The Village of Pemberton collects money from Pemberton residents on behalf of the Regional District, for what are sometimes referred to as 'shared services.' These are the sub-regional services that the SLRD provides for residents of both Electoral Area C and the Village of Pemberton. The graph shows the contribution by percentage of the total amount collected by the Village of Pemberton for these sub-regional services.

52.8% of the amount you contribute under the "SLRD levy" goes to funding Recreation Services which includes the Community Centre, the Youth/Seniors Centre, the Meadows Field and Gates Lake Park. If your property is valued at \$500,000, that contribution in 2014 will be approximately \$451.00. Area C residents pay for recreation at the same rate, a contribution that amounts to 52% of the total cost of the Recreation Service, with Village of Pemberton residents paying a 48% share.

## 2013 Highlights

**Purchased a 3-acre property on Gates Lake (end of 2012):** The original upper Gates Lake property was sold, and the new property will be developed in phases for community use and enjoyment. With this, the SLRD conducted community engagement and a study - *Poole Creek / Birken / D'Arcy "Closer to Home" Recreation Plan* - to inform development of the park's amenities.

**Implemented an online geographic information mapping system:** The GIS system gives users access to base-mapping, addressing, zoning, official community plans, agricultural land reserve information and more. Users can pan over neighbourhoods, calculate distances, determine elevation profiles, see aerial views, and check detailed property information and assessments. Check it out at [www.slrd.bc.ca](http://www.slrd.bc.ca).

**Hired a new Recreation Services Manager:** Prior to beginning her work with the SRLD, Angela Barth worked for the City of Surrey for 8 years as a Community and Recreation Services Manager for the town centre of Newton, Surrey.

**Connected the Valley Loop Trail:** Thanks to a local property owner, you can now ride, walk or run the 7+ km route which connects farmland, riverside trail and the Village itself.

**Assisted with Birkenhead River flood control:** In collaboration with the Pemberton Valley Dyking District, Lil'wat Nation, Village of Pemberton as well as the provincial and federal governments, the SLRD worked to establish an initial gravel and debris removal from the Birkenhead River. The Birkenhead Technical Steering Committee, comprised of the aforementioned groups, will continue to work together to reduce seasonal flooding impacts from the Birkenhead River.

**Completed remediation works at Lillooet Lake Estates:** An estimated 10,000 – 25,000 cubic metres of material was deposited during a debris flow in the Cataline Creek drainage overnight on August 29, 2013. Thankfully, nobody was hurt and no buildings were damaged, but the In-SHUCK-ch Forest Service Road was impacted. The SLRD worked with Emergency Management BC to develop and implement a plan to remediate the impacts.

**Adopted the Integrated Sustainability Plan (ISP):** The ISP is a long-term plan developed in consultation with community members and regional stakeholders that articulates the region's criteria for success and sustainability, identifies actions to move the region toward its desired future, and provides indicators to monitor progress.

**Began redevelopment of the SLRD website:** The new website will improve communication and engagement, enhance customer service and satisfaction and promote the region as a desirable place to live, work, visit and invest. The site is set to launch on July 10, 2014.

# Services & Projects Planned for 2014

## Initiate Phase One development of Gates Lake Park

Plans include improving accessibility, expanding parking and constructing a washhouse, covered BBQ area and walking paths. The SLRD will also continue exploring a safe railway crossing with CN Rail regarding access to Gates Lake.



## Continue work on the Valley Loop Trail, the Nairn Connector (Sea to Sky) Trail and the Friendship Trail

A gravel surface will be constructed along a 900 m portion of the Valley Loop Trail between Airport Road and the Lillooet River Bridge. The SLRD also hopes to add another 1 km section to the Sea to Sky Trail along the south side of Nairn Falls Provincial Park. As well, two locations for a bridge over the Lillooet River are being studied in the movement towards the goal of providing a non-motorized route – *The Friendship Trail* – to join Mount Currie and Pemberton.

## Negotiate a long-term lease with School District 48 for the Meadows Sports Fields

**Launch new website** (scheduled for July 10, 2014) Users can expect expanded Electoral Area content, improved navigation and functionality, enhanced searchability, and new initiatives to increase communication and engagement.

**Implement a new recreation program, *Seniors Interacting Through Art*.** Funded through the UBCM Age-Friendly Community Planning and Project grant, the program is designed to introduce area seniors to a variety of cultural and artistic activities. The program provides area seniors a friendly, safe and familiar environment to explore opportunities for creative self-expression.

**Initiate update of the SLRD's Solid Waste Management Plan (SWMP)** The Ministry of Environment requires all regional districts in BC to have a plan for how their region's waste will be managed and reduced. The last SWMP was completed in 2007. A lot has changed since then, and the SLRD is updating its plan to make sure that its programs continue to be effective in reducing waste throughout the region.

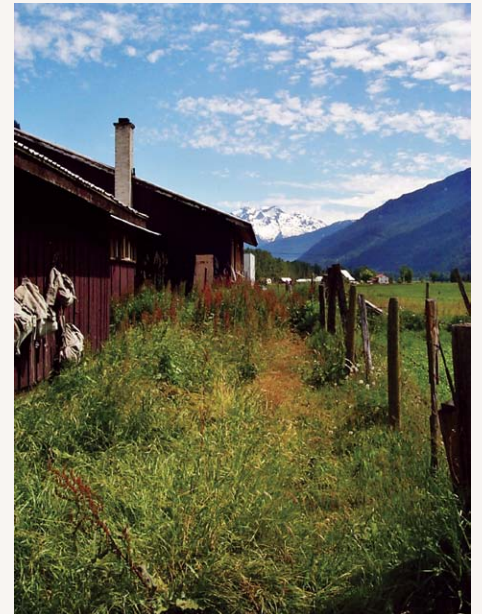
**Install new compactor at Devine Transfer Station** (will be operational by early July 2014)

## Conduct a pilot Forest Fuel Management Prescription

Electoral Area C applied for and received a Strategic Wildfire Prevention Initiative grant through UBCM to conduct a pilot forest fuel management prescription in the Birken-D'Arcy corridor. The project received seed funding from Area C Select Funds and will set out forest fuel management measures to help reduce future fire risk in the area.

## Complete SLRD Fire Services review

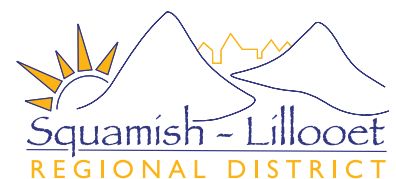
**Conclude negotiations with the Village of Pemberton regarding Pemberton North Water Services**



**We welcome your feedback!**

The SLRD, unlike municipalities, is not directed under the Community Charter to provide annual reports, annual meetings or community updates. This initiative aims to provide Area C and Village of Pemberton residents with the information needed to better understand your property tax bill. We'd love to hear whether you found this fact sheet useful, and if so, how you'd prefer to receive such information in the future.

Comments can be emailed to [info@slrd.bc.ca](mailto:info@slrd.bc.ca). Please cc. [sgimse@telus.net](mailto:sgimse@telus.net).



1350 Aster Street, Pemberton, BC, V0N 2L0  
(604) 894-6371 | [info@slrd.bc.ca](mailto:info@slrd.bc.ca) | [www.slrd.bc.ca](http://www.slrd.bc.ca)