



Box 219, 1350 Aster Street  
Pemberton, BC V0N2L0  
Ph. 604-894-6371, 1-800-298-7753  
F: 604-894-6526  
info@slrd.bc.ca [www.slrd.bc.ca](http://www.slrd.bc.ca)

## UPDATED EVACUATION ALERT ELECTORAL AREA A - DOWNTON LAKE WILDFIRE K71649

**UPDATED: September 11<sup>th</sup>, 2023 at 1600**

The Evacuation Order issued by the Squamish-Lillooet Regional District on August 31<sup>st</sup>, 2023, for all of Area A due to the Downton Lake Wildfire K71649, has been **partially downgraded** and replaced by an **Evacuation Alert** for the following areas:

- All SLRD properties on the east side of Gun Lake between Keir Road and Weaver Road
- All SLRD properties in the Gold Bridge Area
- All SLRD Properties on the North side of Lajoie Lake (aka Little Gun Lake)
- All SLRD Properties in Tyaughton Lake Area.
- All SLRD Properties in the Bralorne area
- Any other SLRD properties located within the boundary noted on the **attached map**.

All properties listed above are on Evacuation Alert. An Evacuation Order may need to be reissued; however, if that is deemed necessary, the Evacuation Order process will recommence.

**Update: Effective September 11<sup>th</sup>, 2023** - The Squamish-Lillooet Regional District has rescinded the Evacuation Alert applying to the following area:

- All SLRD Properties in Marshall Lake Area.
- All SLRD Properties north of Carpenter Lake that are east of Tyaughton Creek.

### IMPORTANT INFORMATION FOR RETURNING EVACUEES:

- **All other SLRD properties on the west side of Gun Lake, the South side of Lajoie Lake (aka Little Gun Lake) and Gun Creek Road remain on Evacuation Order.** Please see the Evacuation Order updated September 8th, 2023 at 1600 for more details.
- **No personal watercraft are permitted on Gun Lake due to ongoing BC Wildfire Service emergency response.**
- Access to the area is via Lillooet-Pioneer Road 40, the Hurley River FSR and Marshall Lake Road. **All roads within evacuation order areas remain closed.**
- The Squamish-Lillooet Regional District has prepared a guide to help you navigate information, tasks and resources that you will find essential as you return home after a wildfire: [Returning home after a wildfire.](#)

### WHAT YOU SHOULD DO:

- Visit [www.DriveBC.ca](http://www.DriveBC.ca) and confirm that your intended route home is not obstructed by road closures.
- Safely return home and coordinate the safe return of your animals or livestock, if necessary.
- If you have received emergency accommodations through Emergency Support Services, these

provisions will cease when the Evacuation Order is rescinded.

- Contact ESS Services to confirm when your emergency accommodations will cease to be available:  
**250-256-8524 (ESS Director)**
- The Gold Bridge Transfer Station will be open with extended hours so residents can dispose of waste. Visit the SLRD Recycling and Waste Centre's page for more information and updates:

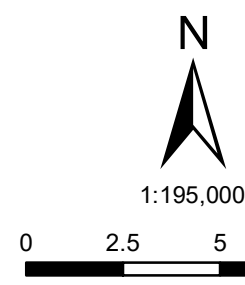
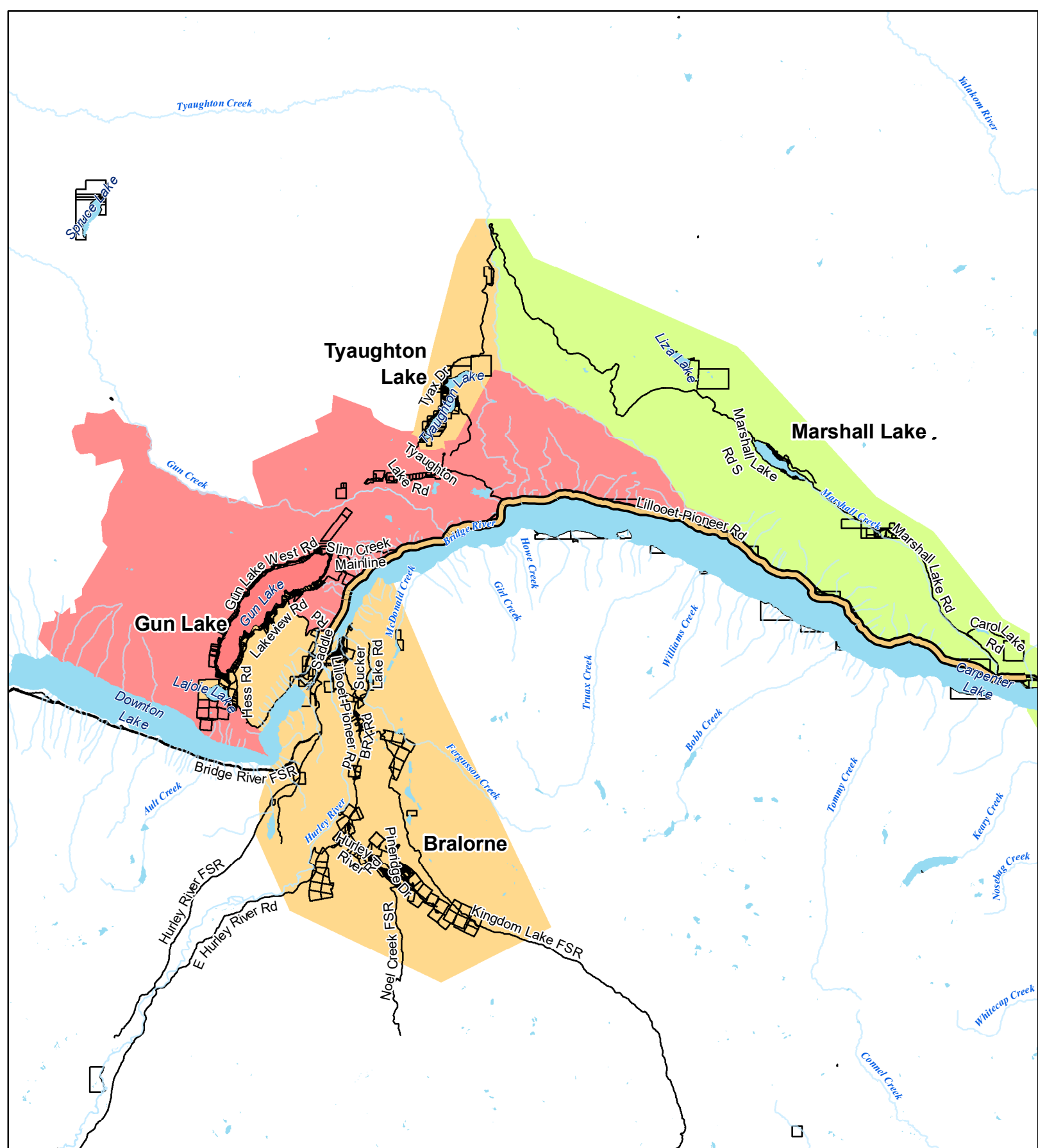
[Gold Bridge Transfer Station Information](#)

- Please be Bear Aware when managing your waste disposal at this time. A reminder, there is a fire ban in place.
- Adhere to the Evacuation Orders in surrounding areas; including road signs and emergency responders' requests.
- For more information, visit [SLRD EOC](#) or call the SLRD Emergency Operation Centre (EOC) toll-free line 1-888-213-0780.

Further information will be posted in notices at [www.slrld.bc.ca](http://www.slrld.bc.ca) and through the SLRD Alert Messaging service. Subscribe to SLRD Alert for free at [www.slrld.bc.ca/slrdaalert](http://www.slrld.bc.ca/slrdaalert) receive emergency notifications via email, text messages, and voicemail.



Jen Ford - Board Chair  
Squamish-Lillooet Regional District



**Downton Lake Wildfire K71649**  
**Evacuation Order and Alert Areas Effective September 11, 2023**

- Evacuation Order Area
- Evacuation Alert Area
- Evacuation Alert Rescinded
- Lillooet-Pioneer Road 40
- SLRD Properties



Date: 2023-09-11