

Squamish-Lillooet

Regional District



British Columbia, Canada



Investment - Ready Community Profile



Photo Courtesy of: www.bridgerivervalley.ca



NORTHERN BC BUSINESS ADVANTAGE

Northern British Columbia is a strategically located, resource-rich economy with many competitive advantages and incentives for business.



British Columbia has one of the most attractive investment climates for business in North America.

Manufacturers, for example, enjoy benefits such as:

- **Strong economic fundamentals** and market opportunities associated with major, long-term projects
- **Low Tax Rates** (personal and corporate) that rank BC among the lowest in Canada – complemented by sales tax exemptions on machinery and tax credits for research and development expenditures
- **Competitive Operating Costs** including low cost electricity relative to elsewhere in Canada or the US
- **Competitive Wage Rates** reflecting a balanced and growing labour pool
- **Growing Labour Supply** with government initiatives that are driving labour mobility into BC and training our existing workforce assets
- **Welcoming Communities** that keenly encourage new manufacturing and service investments
- **Financial Incentives** for capital investments and job creation in northern BC (up to \$5,000 per new job). *Contact Northern Development Initiative Trust.*

Welcome to the Squamish-Lillooet Regional District

Located in southwestern BC, the Squamish-Lillooet Regional District (SLRD) provides local, regional and sub-regional government services to approximately 38,000 residents living in four municipalities and four electoral areas. The municipalities are: the District of Lillooet, the Village of Pemberton, the Resort Municipality of Whistler and the District of Squamish. The four electoral areas are: Area A (Upper Bridge River Valley), Area B (Yalakom Valley / Pavilion Lake / Texas Creek), Area C (Pemberton Valley / Mount Currie – D’Arcy corridor) and Area D (Howe Sound East / Upper Squamish Valley / Squamish to Whistler corridor). The SLRD is found within the traditional territories of the Squamish and St’át’imc Nations and is also home to several First Nations communities.

Straddling the southern Pacific Ranges of the Coast Mountains and encompassing 16,500 square kilometers of land, the SLRD features some of the province’s most spectacular forests, glaciers, rivers and lakes as well as an abundance of fertile agricultural land. From the historic mining town of Bralorne, to the sprawling ranch lands of West Pavilion, to the international resort destination of Whistler, the character and opportunities of the many communities within the region are as diverse as its striking topography.

While the southern SLRD is already well-known for its outdoor recreation, tourism is emerging as an important economic driver in the northern region as well. With its rugged terrain, rich cultural heritage, incredible climate, friendly small-town atmosphere and proximity to the Lower Mainland, the northern SLRD is poised to become a “must-do” for regional and destination visitors alike.

In addition to tourism, opportunities abound in agriculture, both in the Pemberton and Squamish valleys in the south and in the Lillooet area to the north. The Lillooet region has a long history of cattle ranching, farming and fruit production. Recent ventures into hops, grape-growing, wine-making and other value-added processing are fueling excitement about the area’s agricultural potential.

Construction, forestry, renewable energy and mining add to the diverse mix of economic opportunities.

The SLRD strives to support the well-being of our residents and visitors, protect the region’s natural environment and beauty, enhance the region’s world-class outdoor recreation, and foster balanced, equitable and sustainable economic development. Building effective partnerships with regional stakeholders is a key element of our success.

Within this Community Investment Profile you will find the information you may need to make your decision to start or relocate your business or family to the Squamish-Lillooet Regional District. If you require additional detail, or if we can assist in any other way, please feel free to contact our friendly and knowledgeable staff.

On behalf of each of our diverse and distinct communities, we invite you to explore our region’s potential, and we welcome you to join us to live, work and play.

SLRD Board Chair, Patricia Heintzman
Regional District of Squamish-Lillooet
1350 Aster Street
Pemberton, BC V0N 2L0
Tel: 604-894-6371



CONTENTS

1. Demographics	6
Population	6
Household Income	6
Workforce Education Attainment	7
Language Knowledge	7
2. Labour Force.....	8
Employment by Industry	8
Top Employers	9
Average Income By Occupation – Lower Mainland (Southwest Region)	10
Labour Force	11
Employment Rate	11
Labour Participation Rate	11
3. Payroll Costs.....	12
Workers Compensation – 2012	12
Employment Insurance – 2012	12
Social Insurance (Canada Pension Plan) – 2012	12
4. Higher Education	14
Four Year Institutions	14
Training Services	17
5. Transportation	18
Major Transportation Routes	18
Highways	22
Commercial Airports	24
Ports	27
Warehouses	29
Port Shipping Distances	30
6. Industrial & Commercial Land Use	31
Land Zoned and Designated in Official Community Plan	31
Local Permit Approvals	32
7. Utilities.....	35
Water System – District of Lillooet	35
Water System – Village of Pemberton	35
Water System – District of Squamish	36
Water System – Resort Municipality of Whistler	37
Waste Water System – District of Lillooet	37

Waste Water System – Village of Pemberton	38
Waste Water System – District of Squamish	38
Waste Water System – Resort Municipality of Whistler	38
Landfill and Waste Management	39
Licensed Hazardous Materials Disposal	39
Electric Power	40
Natural Gas	42
Telecommunications	43
8. Business Support Services.....	44
9. Government	45
Municipal Government	45
Regional District	46
Provincial	47
Provincial Government Representation	47
Federal Government Representation	47
10. Housing	49
Housing Characteristics	49
Average Housing Values	49
11. Taxation	50
Corporate Income Tax	50
Personal Income Tax	50
Sales / Use Tax	50
Sales Tax Rate by Utility	51
Property Tax	52
12. International Resources.....	55
Investment and Business Support Offices	55
Financial Institutions	57
Employment Assistance	58
Air Transportation Service	59
13. Quality of Life	60
Climate	60
Culture	62
Health	66

1. DEMOGRAPHICS

POPULATION

SQUAMISH-LILLOOET REGIONAL DISTRICT

Population By Age Group	Population (2006)	% Distribution
Under-18	8,640	22.9%
18-34	8,900	24.8%
35-54	11,685	32.7%
55-74	5,010	16.3%
75-Older	995	3.2%
Total:	35,230	100.0%
Median Age:	35.1	

NORTHERN BC

Population By Age Group	Population (2006)	% Distribution
0-4	19,300	6%
5-17	60,400	18.8%
18-24	30,900	9.6%
24-44	88,500	27.5%
45-64	90,700	28.2%
65+	32,200	10.0%
Total	322,000	100%

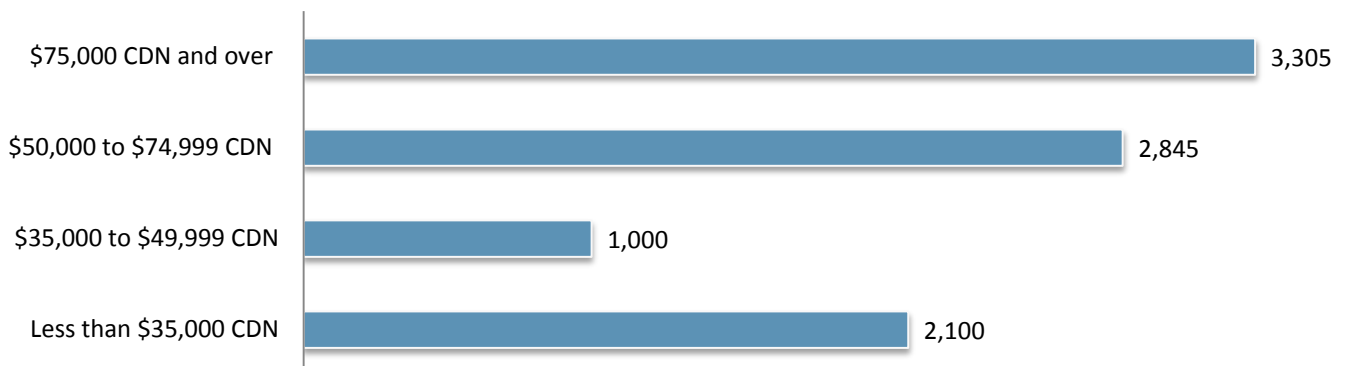
Data Source: BC Stats – Quarterly Regional Statistics “Cariboo, North Coast, North East, Nechako” – http://www.bcstats.gov.bc.ca/pubs/pr_qrs.asp

HOUSEHOLD INCOME

Household Income	2006
Number of Households	13,990
Median Income - All Families	\$56,360 (CDN)
Median After-Tax Income – All Families	\$49,126 (CDN)

Data Source: Census Community Profile – <http://www12.statcan.gc.ca/census-recensement/2006/dp-pd/prof/92-591/index.cfm?Lang=E>

HOUSEHOLD INCOME – DISTRIBUTION



Data Source: BC Stats “Squamish-Lillooet Community Profile” – www.bcstats.gov.bc.ca/data/dd/profiles.asp

WORKFORCE EDUCATION ATTAINMENT

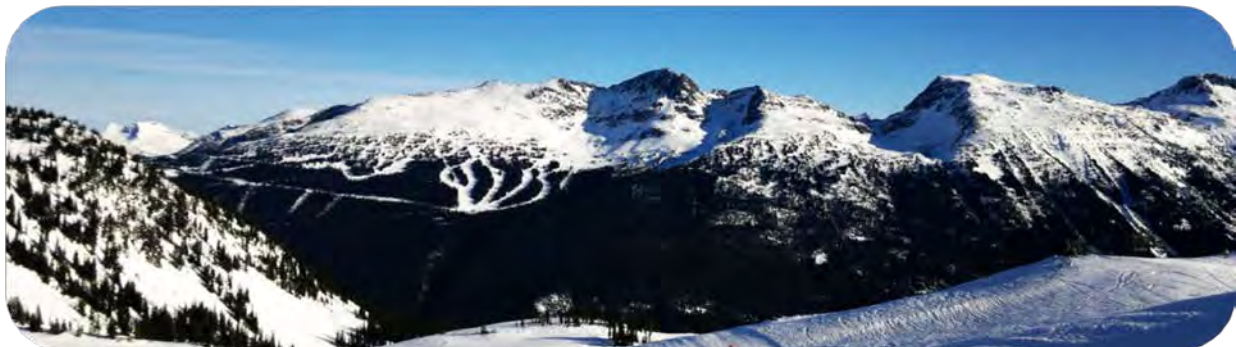
Level of Education	Number Attained	Percentage
High School Diploma Only	8,690	35%
College/University Certificate/Diploma	5,400	22%
Less than High School Diploma	3,155	13%
Apprenticeship/Trades Certificate/Diploma	3,325	13%
University Bachelors Degree	3,260	13%
University Graduate Degree/Certificate	675	3%
University Medical/Dentistry/Optometry Degree	140	1%

Data Source: StatsCan – 2006 Census – “Education”

LANGUAGE KNOWLEDGE

Languages Spoken	Citizens
English	31,635
French	1,325
Panjabi	1,145
German	600
Chinese	180
Japanese	370
Spanish	225
Korean	75
Dutch	125
Other	2,075

Source: StatsCan – 2011 Census – “Mother Tongue”



2. LABOUR FORCE

EMPLOYMENT BY INDUSTRY

SQUAMISH-LILLOOET REGIONAL DISTRICT

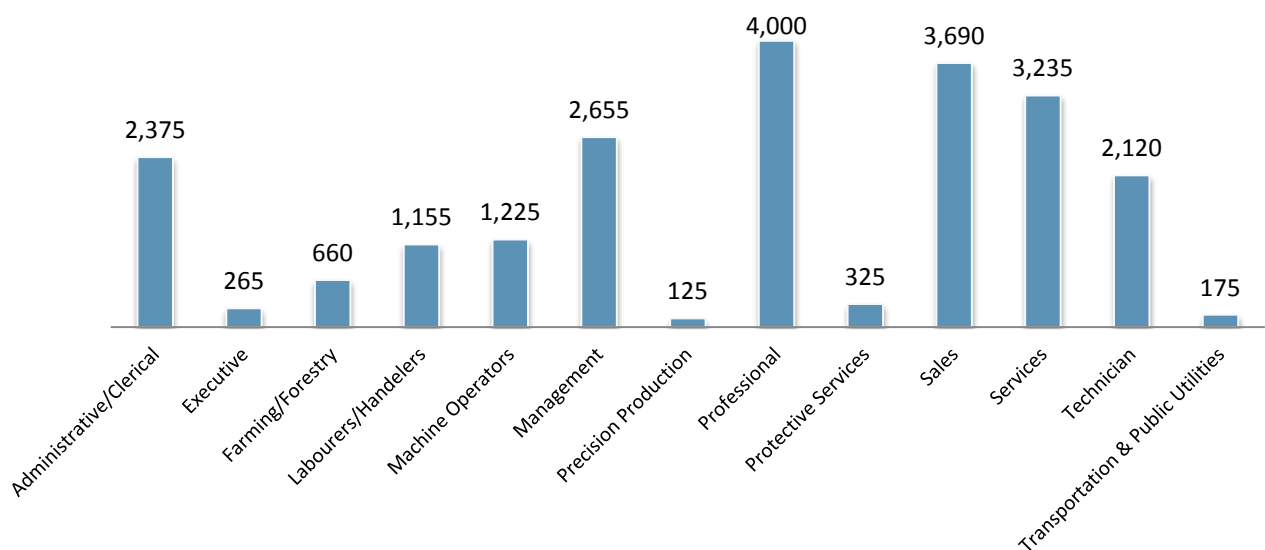
Sector (Industry)	Number
Forestry & Logging	780
Mining and Oil & Gas	130
Construction	2,755
Manufacturing	810
Transportation & Public Utilities	950
Wholesale Trade	370
Retail Trade	2,110
Services	11,660
Finance, Insurance & Real Estate	1,210
Government	1,185
Total	21,960

NORTHERN BC

Sector (Industry)	Number
Forestry & Logging	16,230
Mining and Oil & Gas	6,580
Construction	12,385
Manufacturing	21,310
Transportation & Public Utilities	12,305
Wholesale Trade	5,455
Retail Trade	18,475
Services	32,940
Finance, Insurance & Real Estate	6,040
Government	43,120
Total	174,840

Data Source: Stats Canada 2006 Regional District Profile; Bulkley Nechako, Cariboo, Fraser Fort George, Central Coast, Skeena Queen Charlotte, Kitimat Stikine, Stikine, Northern Rockies, Peace River— <http://www12.statcan.ca/census-recensement/2006/dp-pd/prof/92-591/index.cfm?Lang=E>

EMPLOYMENT BY OCCUPATION



Data Source: StatsCan – 2006 Census – “Occupation”

TOP EMPLOYERS

District of Lillooet

Company	Product/Service	Number of Employees	Ownership	Website
School District #74	Education	110	Public	www.sd74.bc.ca
Lillooet District Hospital	Health Care	TBD	Public	www.lillooetbc.com/Residents/Health-Services
Savona Specialty Plywood	Sawmill	TBD	Private	www.savonaspecialtyplywood.com

Village of Pemberton

Company	Product/Service	Number of Employees	Ownership	Website
School District 48	Education	TBD	Public	www.sd48.bc.ca
Pemberton Valley Supermarket	Grocer	TBD	Private	www.pembertonsupermarket.com
Mount Currie Indian Band	Band/ Council	TBD	Private	www.lilwat.ca

District of Squamish

Company	Product/Service	Number of Employees	Ownership	Website
---------	-----------------	---------------------	-----------	---------

Information regarding the District of Squamish's Top Employers will be updated shortly.

Resort Municipality of Whistler

Company	Product/Service	Number of Employees	Ownership	Website
---------	-----------------	---------------------	-----------	---------

Information regarding the Resort Municipality of Whistler's Top Employers will be updated shortly.

Data Source: Northern Development Research – www.northerndevelopment.bc.ca



AVERAGE INCOME BY OCCUPATION – LOWER MAINLAND (SOUTHWEST REGION)

Occupation	Average wage (\$/Hour)(\$CDN)	Effective Date
Administrative Clerks	20.54	2012
Bookkeepers	18.97	2012
Business Development Officers	28.28	2012
Carpenters	24.00	2012
Civil Engineers	37.00	2012
Computer Engineers	36.06	2012
Crane Operators	28.00	2012
Drafting Technicians	28.00	2012
Electrical Engineers	31.25	2012
Forestry Technicians	27.00	2012
Geological Engineers	25.78	2012
Heavy Duty Equipment Crews	32.00	2012
Heavy Equipment Operators	29.00	2012
Industrial & Manufacturing Engineers	28.63	2012
Industrial Electricians	32.00	2012
Labourers in Wood, Pulp and Paper Processing	24.00	2012
Labourers, Processing Manufacturing and Utilities	15.00	2012
Logging Machinery Operators	26.50	2012
Machinists	25.37	2012
Mechanical Engineers	35.90	2012
Mining Engineers	36.66	2012
Petroleum Engineers	37.35	2012
Primary Production Managers	30.00	2012
Purchasing Managers	32.45	2012
Sales Representatives	23.00	2012
Senior Managers	40.90	2012
Shippers and Receivers	15.00	2012
Steamfitters	27.50	2012
Trade Helpers and Labourers	18.00	2012
Truck Drivers	22.29	2012

For a complete list of Wages and Salaries in Northern BC visit the link below:
http://www.workingincanada.gc.ca/LMI_report_area.do?lang=eng&area=25565&reportOption=wage

LABOUR FORCE

	Number
Total Population 15 and over	28,725
In Labour Force	22,195
Employed	20,650
Unemployed	1,545

Data Source: StatsCan – 2006 Census – “Community Profile”

EMPLOYMENT RATE

	Percentage of Population
Unemployment Rate	7.0%
Labour Participation	77.3%

Data Source: StatsCan – 2006 Census – “Community Profile”

LABOUR PARTICIPATION RATE

	Labour Participation Rate
Male	81.5%
Female	72.4%

Data Source: StatsCan – 2006 Census – “Community Profile”



Photo Courtesy of: www.bridgerivervalley.ca



3. PAYROLL COSTS

WORKERS COMPENSATION – 2012

		Notes
Average Cost of All Manufacturing Per \$100 Payroll	\$1.54 CDN	Rates set by employer's business activity. Applies up to maximum gross earnings of \$73,700(CDN) per year.
Average Rate for Office Workers Per \$100 Payroll	\$0.30 CDN	There is no separate rating for office occupations in BC- the applicable industry rating applies to all workers. Rates for Business Services range from \$0.09-\$0.30 per \$100 of payroll. Average of \$0.30(CDN).
Maximum Weekly Benefit (Net)	\$974.21 CDN	Maximum per employee set at 90% of average net earnings (after deductions for income taxes, Canada Pension Plan & Employment Insurance), up to maximum wage of \$73,700 per year(CDN).

EMPLOYMENT INSURANCE – 2012

		Notes
Taxable Base		Based on gross payroll up to a gross per worker salary of \$45,900 per year(CDN).
Percentage Rate(Employer Premium)		
▪ Employee Rate	1.83%	Maximum annual contribution per worker is \$839.97(CDN).
▪ Employer Rate	2.56%	Maximum annual contribution per worker is \$1,176.00(CDN).
▪ Maximum Weekly Benefits	\$485.00 CDN	



SOCIAL INSURANCE (CANADA PENSION PLAN) – 2012

		Notes
Taxable Base	Gross Payroll \$3,500 CDN	Based on annual gross salary up to \$50,100.00, basic exemption of \$3,500. Both employers and employees are required to contribute to the Canada Pension Plan.
Employee/Employer Contribution	4.95%	Employer premium equal to employee premium
Maximum Annual Employer Contribution Per Employee	\$2306.70 CDN	Employer contribution matches employee contribution.
Rate	4.95%	
Maximum Annual Self Employed Contribution	\$4,613.40 CDN	

Data Source: TaxTips.ca – <http://www.taxtips.ca/cppandei.htm>
 Data Source: WorkSafeBC – www.worksafebc.com



4. HIGHER EDUCATION

FOUR YEAR INSTITUTIONS

Institution	Capilano University
Campus/Address	Capilano University Squamish Campus PO Box 1538 1150 Carson Place Squamish, BC V8B 0B1 Tel: 604-892-5322
Other Campuses	North Vancouver, Sunshine Coast
Website	www.capilanou.ca
Driving Distance from SLRD (head office)	Located in Squamish, BC
Enrolment (2010/11):	706

Institution	Quest University Canada
Campus/Address	3200 University Boulevard Squamish, BC V8B 0N8 Tel: 604-815-0829
Website	www.questu.ca
Driving Distance from SLRD (head office)	Located in Squamish, BC
Enrolment (2010/11):	450

Institution	Thompson Rivers University
Campus/Address	Box 3010 900 McGill Road Kamloops, BC V2C 5N3 Tel: 250-828-5086
Other Campuses	Lillooet, Ashcroft, Cache Creek, 100 Mile House and Williams Lake
Website	www.tru.ca
Driving Distance from SLRD (head office)	358 km
Enrolment (2010/11):	14,140

Institution	University of Northern British Columbia
Campus/Address	3333 University Way, Prince George, BC V2N 4Z9 Tel: 250-960-5555
Other Campuses	Quesnel, Terrace, and Fort St. John.
Website	http://unbc.ca/
Driving Distance from SLRD (head office)	607 km
Enrolment (2010/11):	3,625

Institution	University of British Columbia
Campus/Address	2929 West Mall Vancouver, BC V6T 1Z4 Tel: 604-822-2211
Other Campuses	Kelowna
Website	http://www.ubc.ca/
Driving Distance from SLRD (head office)	156 km
Enrolment (2010/11):	37,000



Institution	Simon Fraser University
Campus/Address	8888 University Drive Burnaby, BC V5A 1S6 Tel: 778-782-3111
Other Campuses	Surrey and Vancouver
Website	http://www.sfu.ca/
Driving Distance from SLRD (head office)	167 km
Enrolment (2010/11):	35,000

Institution	University of the Fraser Valley
Campus/Address	33844 King Road Abbotsford, BC V2S 7M8 Tel: 604-504-7441
Other Campuses	Chilliwack, Mission and Hope
Website	www.ufv.ca
Driving Distance from SLRD (head office)	273 km
Enrolment (2010/11):	15,085

Institution	Emily Carr University of Art & Design
Campus/Address	1399 Johnston Street, Granville Island Vancouver, BC V6H 3R9 Tel: 604-844-3800
Website	www.ecuad.ca
Driving Distance from SLRD (head office)	157 km
Enrolment (2010/11):	4,750



TRAINING SERVICES

Institution	Category	Address
Sea to Sky Safety Training Services	Red Cross First Aid	101-38026 Second Avenue Squamish, BC V8B 0C3 Tel: 604-848-8423
Sidorov Advanced Driver Training	Driving Training	PO Box 70 Whistler, BC V0N 1B0 Tel: 604-905-0146
Squamish Employment Services Centre	Employment Services	302 – 37989 Cleveland Avenue, Squamish, BC V8B 0C8 Tel: 604-815-4550
Lillooet Work BC Employment Services Centre	Employment Services	639B Main Street Lillooet, BC V0K 1V0 Tel: 250-256-7768
Whistler Employment Services Centre	Employment Services	204-1200 Alpha Lake Road Whistler, BC V0N 1B1 Tel: 604-932-1600

Data Source: Northern Development Research – www.northerndevelopment.bc.ca



5. TRANSPORTATION

MAJOR TRANSPORTION ROUTES

PACIFIC GATEWAY

British Columbia's ports in Vancouver, Kitimat, Stewart and Prince Rupert are Asia's closest ports of entry on the west coast of North America, up to 58 hours closer than the ports of Los Angeles and Long Beach.

Canadian ports and airports are seamlessly integrated with road and rail connections to all major U.S. economic centers. British Columbia is the only gateway on the west coast of the Americas served by three transcontinental railways. Today, Canada's Pacific Gateway is an integrated, secure, reliable transportation network that includes world-class airports, seaports, railways, roadways and border crossings, bringing Canada and the North American market to Asia and the world. Canada's Pacific Gateway, through British Columbia's ports in Vancouver, Kitimat, Stewart and Prince Rupert, offers Asian shippers the most direct route between Asia and North America.

Canada's Pacific Gateway is a strong commitment by government and industry partners to make British Columbia's ports the preferred gateway for Asia-Pacific trade, with the most competitive port system and supply chain on the west coast of the Americas. This commitment builds on Canada's longstanding and strong cultural and economic ties with Asia. In the emerging new global economy, Canada's Pacific Gateway is a gateway to the future.



NORTHERN CORRIDOR

The Northern Corridor spans over half of continental Canada and reaches well into the heartland of North America south of Chicago, USA. It travels through the lowest elevations of the Americas great continental divide, also known as the “Yellow Head Pass,” and forms the straightest, shortest, flattest route for Asian- North American trade. Three Northern British Columbia ports provide efficient access to this corridor; Kitimat, Stewart and Prince Rupert. Each port offers unique advantages and services that meet the needs of the region and international trade.

Trans-continental rail, Trans Canada Highway and direct air service into international Air Hubs are in place. The corridor services business covered by the North American Free Trade Agreement, through a variety of break bulk and container services in ports operated by governments and those run by private port interests.

The Northern Corridor is less impeded by road closures, significant weather patterns and avalanches than the Southern Canadian corridor. It provides “one less day” shipping advantage to or from Asia compared to all other North American Port locations including Vancouver and all USA pacific Ports.

Existing trade in Kitimat and Prince Rupert include aluminum and paper shipped via privately owned break-bulk terminals, transshipment of petrochemicals through privately owned facilities, barge service and container port services. Growth is expected in energy exports including liquid natural gas, petroleum, and container capacity.

Canadian National Rail (CN Rail) reaches well into the heartland of America with shipping agreements in place with major US rail carriers. CN has made significant investments in the Northern Corridor rail line including extended sidings, upgrades to signal systems, increased bridge and tunnel clearances. The corridor is serviced by five international airports and four northern airports with Prince George offering international services. The largest passenger service airport west of Prince George and north of British Columbia’s Okanagan region is the Terrace-Kitimat Northwest Regional airport.

HIGHWAY 5 – COQUIHALLA HIGHWAY

Highway 5 is a north-south route in southern British Columbia, Canada. It connects the southern Trans-Canada route (Highway 1) with the northern Yellowhead route (Highway 16), providing the shortest land connection between Vancouver and Edmonton. It is 524 km (326 mi) in length. The portion of Highway 5 south of Kamloops is known as the Coquihalla Highway, while its northern portion is known as the Southern Yellowhead Highway.

The Coquihalla Highway has created greater access to the interior, cutting travel time to Vancouver by almost two hours while facilitating commuter traffic to and from Kamloops. The result has been increased building activity in the area that has continued for more than a decade.

HIGHWAY 1 – TRANS CANADA HIGHWAY

The Trans-Canada Highway between Victoria, British Columbia and St. John's, Newfoundland, joins all ten provinces of Canada and is the world's longest national highway with a length of 7,821 km (4,860 mi.) The British Columbia portion of the highway runs along the path of the Canadian Pacific Railway, through the Thompson Nicola Regional District to the Port of Vancouver.

The Village of Cache Creek is strategically located at the junction of the Trans Canada Highway, and the northbound Highway 97.

HIGHWAY 97 – CARIBOO HIGHWAY

Highway 97 is the longest continuously-numbered route in British Columbia , and the longest provincial highway in Canada, running 2,081 km (1,293 mi) from the Canada/U.S. border at Osoyoos in the south to the British Columbia/Yukon border in the north at Watson Lake, Yukon.

The Cariboo Highway section of Highway 97, between Cache Creek and Prince George, is 441 km (274 mi) in length and is named for the Cariboo region, through which it travels. The Cariboo Highway designation begins at Cache Creek, veering north for 11 km (7 mi) to its junction with Highway 99. North of Highway 99, Highway 97 travels 92 km (57 mi) through Clinton and 70 Mile House, where the British Columbia Railway begins to roughly parallel Highway 97.

HIGHWAY 99- SEA TO SKY HIGHWAY

Highway 99, also known as the Sea to Sky Highway, the Squamish Highway and/or Whistler Highway, is the major north-south artery running through the Greater Vancouver area of British Columbia from the US border and beyond Howe Sound through the Sea to Sky Country to Lillooet and connecting to British Columbia provincial Highway 97 just north of Cache Creek. The number of this highway is derived from the old U.S. Highway 99, which the highway originally connected with at the Canada-U.S. boundary. The highway currently connects with Interstate 5 at the international border.



HIGHWAY 12

Opened in 1953, Highway 12 connects the Trans Canada Highway 1 in Lytton to Highway 99 in Lillooet. It is a 62 km highway that follows the east bank of the Fraser River.

ROUTE 40

Route 40 is a year-round mountain road that connects the communities of the Upper Bridge River Valley with Lillooet. Approximately 105 km in length, the road is a mix of paved and gravel surfaces.



HIGHWAYS



PROVINCIAL PERMIT CENTRE

For information on receiving a commercial vehicle permit please contact **1-800-559-9688**. The core hours of service are from 5am to 10pm, seven days a week and most statutory holidays. The 1-800 number is available to callers anywhere in Canada or the United States. Permits available through this line include:

- non-resident commercial vehicle permits
- term oversize and overweight permits
- single trip oversize and overweight permits
- motor fuel tax permits
- highway crossing permits
- extra-provincial temporary operating permits

HIGHWAY DISTANCES FROM SLRD HEAD OFFICE IN PEMBERTON

Metro Area	Distance
Prince Rupert	1,319 km
Prince George	607 km
Kamloops	268 km
Edmonton, Alberta	1,075 km
Vancouver	158 km
Calgary	888 km
Victoria	272 km
Seattle, Washington	383 km
Portland, Oregon	662 km
Lillooet	99 km
Whistler	33 km
Squamish	92 km



DRIVING DISTANCES

Locations	Distance	Approximate Driving Time
Vancouver to Squamish	68 km	1 hour, 3 minutes
Squamish to Whistler	59 km	44 minutes
Whistler to Pemberton	33 km	28 minutes
Pemberton to Lillooet	99 km	1 hour, 27 minutes

RAILROADS

CN Rail	www.cn.ca
Main or Branch Line:	Secondary Mainline
Shortline or National:	National and Shortline
Distance to Nearest Switching Yard:	Located within community
Capabilities	Cargo-Bulk, Container, Liquid, Multi Commodities
Closest Shipping Yard:	Squamish Terminals

Data Source: Northern Development Research - www.northerndevlopment.bc.ca

COMMERCIAL AIRPORTS

Kamloops Airport

Distance to Airport (from SLRD head office)	268 km
Hub Status	Recreational, Commercial, Corporate
Hours of operation	Terminal: 4:00 am – 12:00 am Airfield: 24/7
Approved Capital Expansion	2,000 ft runway extension, 2 new taxi ways
Customs Point of Entry	Yes – commercial flights only
Foreign Trade Zone	No
Full instrumentation	Yes
Number of Runways	2
Runway Length	8,000 ft, 2,780 ft
No. Of Weekly Non-Stop Flights To	
Carriers	Air Canada Jazz, Central Mountain Air, WestJet, FedEx, Canadian Helicopters, Highland Helicopters, Westair Aircraft Charter
▪ Greater Vancouver	35
▪ Calgary	28
▪ Prince George	7

Lillooet Municipal Airport

Hub Status	Regional
Hours of Operation	Fuel 24 hours a day via cardlock
Runway Length	3,990 ft
Airport Services	Fuel sales, tie downs, pilot lounge

Pemberton Airport

Hub Status	Commercial & Charter
Distance From Community	Located in Community
Hours of Operation	Varies (Tel: 604-894-6135)
Approved Capital Expansion	New terminal facility under construction
Customs Point of Entry	No
Foreign Trade Zone	No
No. of Runways	1
Runway Length	4,000 ft
Weekly Non-Stop Flights	8
Carriers	Blackcomb Aviation, Pemberton Soaring Centre

Whistler Airport

Hub Status	Commercial & Tourism
Distance From Community	Located in Whistler
Hours of Operation	7:30 am – 7:30 pm
Approved Capital Expansion	Float plane dock
Customs Point of Entry	No
Foreign Trade Zone	No
Full Instrumentation	n/a
No. of Runways	1
Runway Length	n/a
Weekly Non-Stop Flights	49
Flights to Vancouver	34
Carriers	Helijet International, Harbour Air

Squamish Airport

Hub Status	Commercial & Charter
-------------------	----------------------

Distance to Airport (from SLRD head office)	92 km
--	-------

Approved Capital Expansion	Not Available
-----------------------------------	---------------

Customs Point of Entry	No
-------------------------------	----

Foreign Trade Zone	No
---------------------------	----

No. of Runways	1
-----------------------	---

Runway Length	2,400 ft
----------------------	----------

Weekly Non-Stop Flights	0
--------------------------------	---

Largest International Airport	Vancouver
--------------------------------------	------------------

Distance to Airport (from SLRD head office)	170 km
--	--------

Customs Point of Entry	Yes
-------------------------------	-----

Foreign Trade Zone	No
---------------------------	----

Full Instrumentation	Yes
-----------------------------	-----

No. of Runways	3
-----------------------	---

Runway Length	3,030 m; 3,500 m; 2,225 m
----------------------	---------------------------

Carriers

▪ Passenger	62 (Including 13 code share)
--------------------	------------------------------

▪ Cargo	6
----------------	---

▪ Charter	8 (Included in Passenger carriers)
------------------	------------------------------------

Weekly Non-Stop Flights	4,289 departures
--------------------------------	------------------

Data Source: Northern Development Research - www.northerndevelopment.bc.ca



PORTS

PORT METRO VANCOUVER

Port Metro Vancouver	www.portmetrovancover.com
Driving Distance from SLRD Head Office	158 km
Location of Port	Vancouver
Terminals:	<p>Port Metro Vancouver offers 28 deepsea and domestic marine terminals that service five business sectors: automobiles, breakbulk, bulk, containers and cruise. To view terminal locations, please click on the Terminals & Facilities tab of our interactive map on the home page of this website.</p> <p>For more information on individual terminals, please visit: http://www.portmetrovancover.com/users/landoperations/terminalsandfacilities.aspx</p>
Type of Port:	Ocean
Channel Depth:	Minimum - 10 meters (33 feet)
Turning Basin:	Unlimited
Shallow Water Barging Facilities:	Yes
Deep Water Barging Facilities:	Yes
General Cargo Facilities:	Yes
Containerized Facilities:	Yes
Storage Facilities:	Yes
Highways Serving Port:	#1, #1A, #7A, #99, #19
Railways Serving Port:	CN Rail, CP Rail, BC Rail, Burlington Northern Santa Fe Railroad
Types of Services	Bulk, Break-Bulk, Automobile, Container, Cruise
Port Address	100 The Pointe, 999 Canada Place, Vancouver, BC V6C 3T4 www.portmetrovancover.com



SQUAMISH TERMINALS

Squamish Terminals	www.sqterminals.com
Distance from Squamish	Located adjacent to the community
Location of Port	Squamish, BC
Terminals	Squamish Terminals (SQT) is a deep-water, break-bulk terminal situated at the north end of Howe Sound – just 32 nautical miles north of the Port of Vancouver. SQT handles forest products, steel and project cargo for loading to and from ocean vessels, barges, rail and trucks.
Type of Port	Ocean
Channel Depth	Min. – 38 feet
Shallow Water Barging Facilities	Yes
Deep Water Barging Facilities	Yes
General Cargo Facilities	Yes
Containerized Facilities	No
Refrigerated Container Facilities	No
Cruise Ship Facilities	Yes
Storage Facilities	Yes
Highway Serving Port	#99
Railway Serving Port	CN Rail
Types of Services:	Break-bulk
Imports	Primarily steel, frack sand, etc.
Exports	Pulp, Lumber, Project Cargo
Shipping Lines	Public Port



CUSTOM POINT OF ENTRY

Canadian Border Services Agency	Kamloops
Type of Entry Point	Airport
Location	3025 Airport Road Room 108 Kamloops, BC V2B 7W9 Tel: 1-800-461-9999

Canadian Border Services Agency	Kelowna
Type of Entry Point	Airport
Location	15-5533 Airport Way Kelowna, BC V1V 1S1 Tel: 1-800-461-9999

Canadian Border Services Agency	Pacific Highway Border Crossing
Type of Entry Point	Highway 44/Pacific Highway
Location	28-176 Street Surrey, BC V3S 9R9 Tel: 1-800-461-9999

Canadian Border Services Agency	Waterfront and Warehouse Operations
Type of Entry Point	Port
Location	333 Dunsmuir Street Vancouver, BC V6B 5R4 Tel: 1-800-461-9999

Canadian Border Services Agency	Squamish Terminals
Type of Entry Point	Port
Location	Reports to Office: 333 Dunsmuir Street Vancouver, BC V6B 5R4 Tel: 1-800-461-9999

Data Source: Northern Development Research – www.northerndevlopment.bc.ca

WAREHOUSES

No. of Bonded Warehouses	1
No. of Public Warehouses	4

Data Source: Trade and Invest British Columbia “Community Profile” – www.britishcolumbia.ca/invest

PORT SHIPPING DISTANCES

The NW Transportation and Trade Corridor ports (Kitimat and Prince Rupert, Stewart) are between 1 and 1 1/2 day closer to general Asia Pacific markets than the Ports in British Columbia's lower mainland; and the Vancouver Ports. The Southern Ports are closer to the Panama Canal and subsequently, the Atlantic. The following table is in nautical miles. The Time/Speed/Distance Calculations are at 16.1439 Kn/Hr., the average speed The Port of Vancouver uses for calculating their shipping to Yokohama, Hong Kong, Kaohsiung (Taiwan) and Xingang (China). Deep-sea vessels travel at various speeds between 14Kn/Hr and 20Kn/Hr. The 'great circle shipping route' to Asia from North America has well documented ocean currents and weather/wind patterns which allows for accurate estimates.

	Kitimat	Prince Rupert	Stewart	Vancouver	Los Angeles	Yokohama (Japan)	Hong Kong	Kaohsiung Kang(Taiwan)	Xingang (China)
Vancouver	400 NM 10 Day	477 NM 1.2 Days	573 NM 1.5 Days	--	991 NM 2.5 Days	4,262 NM 11 Days	5,763 NM 15 Days	6,587 NM 17 Days	7,578 NM 20 Days
Los Angeles	1,391 NM 3.5 Days	1,432 NM 3.6 Days	1,529 NM 4 Days	991 NM 2.5 Days	--	4,839 NM 12.5 Days	6,380 NM 18 Days	7,578 NM 20 Days	8,959 NM 23 Days
Yokohama	3,941 NM 10 Days	3,810 NM 9.8 Days	3,896 NM 10.3 Days	4,262 NM 11 Days	4,839 NM 12.5 Days	--	1,585 NM 4 Days	1,335 NM 3.4 Days	1,335 NM 3.4 Days
Hong Kong	5,444 NM 14 Days	5,323 NM 13.7 Days	5,406 NM 14.1 Days	5,763 NM 15 Days	6,380 NM 18 Days	1,585 NM 4 Days	--	290 NM 18 Hrs	290 NM 18 Hrs
Kaohsiung Kang	6,187 NM 16 Days	6,587 NM 17 Days	5,155 NM 13.4 Days	6,587 NM 17 Days	7,578 NM 20 Days	1,335 NM 3.4 Days	290 NM 18 Hrs	--	227 NM 14 Hrs
Xingang	6,187 NM 16 Days	6,587 NM 17 Days	4,749 NM 12.5 Days	7,578 NM 20 Days	8,959 NM 23 Days	1,335 NM 3.4 Days	290 NM 18 Hrs	227 NM 14 Hrs	--

Source: United States Government. "Distances Between Ports" Prepared and published by the National Imagery and Mapping Agency, Bethesda, Maryland. Ninth Edition 1997. *Time/Speed/Distance Calculations at 16.1439 Kn/Hr., the average speed Vancouver Port lists to reach Yokohama, Hong Kong, Kaohsiung (Taiwan) and Xingang (China)

6. INDUSTRIAL & COMMERCIAL LAND USE

LAND ZONED AND DESIGNATED IN OFFICIAL COMMUNITY PLAN

SQUAMISH-LILLOOET REGIONAL DISTRICT

	Industrial Land	Commercial Land	Mixed Use
Total			
Acres Developed	Please contact the Squamish-Lillooet Regional District's Planning & Development Department at 604-894-6371 or by email at planning@slrd.bc.ca with any inquiries.		
Acres Vacant			

DISTRICT OF LILLOOET

	Industrial Land	Commercial Land	Mixed Use
Total			
Acres Developed	Please contact the District of Lillooet's Planning & Development Department at 250-256-7422 with any inquiries.		
Acres Vacant			

VILLAGE OF PEMBERTON

	Industrial Land	Commercial Land	Mixed Use
Total			
Acres Developed	Please contact the Village of Pemberton's municipal office at 250-894-6135 with any inquiries.		
Acres Vacant			

DISTRICT OF SQUAMISH

	Industrial Land	Commercial Land	Mixed Use
Total	1,678.41 ac	376.20 ac	34.29 ac
Acres Developed	1,056.54 ac	279.60 ac	32.80 ac
Acres Vacant	622.11 ac	96.60 ac	1.48 ac

RESORT MUNICIPALITY OF WHISTLER

	Industrial Land	Commercial Land	Mixed Use
Total			
Acres Developed	Please contact the Resort Municipality of Whistler’s municipal office at 604-935-8170 with any inquiries.		
Acres Vacant			

Data Source: Squamish-Lillooet Regional District – www.slrd.bc.ca

LOCAL PERMIT APPROVALS

SQUAMISH-LILLOOET REGIONAL DISTRICT

Please visit www.slrd.bc.ca for specific information about building and development permits, fees, zoning, etc. Or, contact the SLRD Planning & Development Department at 604-894-6371 or by email at planning@slrd.bc.ca.

Type of Permit	Average Time for Approval	Associate Fees
Building Permit	4- 6 weeks	Minimum \$120
Business License	N/A – Provincial responsibility Visit www.bcbusinessregistry.ca	N/A
Development Permit	8-12 Weeks	Industrial/Commercial: \$1000 plus \$1 per m ² of floor area permitted Multi-family/Intensive Residential: \$1500 for first 10 dwelling units/lots plus \$125 each additional unit
Occupancy Permit	N/A	
Plan Amendment	6-12 Months	\$1300 plus \$1000 public hearing fee
Re-Zoning Application	Minimum 3-4 Months	Residential/Rural: Minimum \$1300 plus \$1000 public hearing fee Commercial/Industrial/Institutional/Agriculture: Minimum \$2000 plus \$1000 public hearing fee
Subdivision Application	N/A	



DISTRICT OF LILLOOET

Type of Permit	Average Time for Approval	Associate Fees
Building Permit	Information regarding the District of Lillooet's Local Permit Approvals will be updated shortly. If you have further inquiries regarding the Local Permit Approvals please contact Lillooet's Planning & Development Department at 250-256-7422.	
Business License		
Development Permit		
Occupancy Permit		
Plan Amendment		
Re-Zoning Application		
Subdivision Application		

Data Source: District of Lillooet – www.lillooetbc.com

VILLAGE OF PEMBERTON

Type of Permit	Average Time for Approval	Associate Fees
Building Permit	5 weeks	\$750.00/acre
Business License	1-2 weeks	Please contact the Village of Pemberton for further information. Tel: 250-894-6135.
Development Permit	6-7 months	\$750.00/acre
Occupancy Permit	Entailed within the building permit process	Please contact the Village of Pemberton for further information. Tel: 250-894-6135.
Plan Amendment	6-8 months	\$750.00/acre
Re-Zoning Application	8 months	Please contact the Village of Pemberton for further information. Tel: 250-894-6135.

Data Source: Village of Pemberton – www.pemberton.ca

DISTRICT OF SQUAMISH

Type of Permit	Average Time for Approval	Associate Fees
Building Permit	5 weeks	Please contact the District of Squamish for further information. Tel: 604-892-5217.
Business License	Residents: 1-2 weeks Non-residents: 5 days	Please contact the District of Squamish for further information. Tel: 604-892-5217.
Development Permit	6-7 months	Please contact the District of Squamish for further information. Tel: 604-892-5217.
Occupancy Permit	Entailed within the building permit process	Please contact the District of Squamish for further information. Tel: 604-892-5217.
Plan Amendment	6-8 months	Please contact the District of Squamish for further information. Tel: 604-892-5217.
Re-Zoning Application	8 months	Please contact the District of Squamish for further information. Tel: 604-892-5217.

Subdivision Application	3 months	Please contact the District of Squamish for further information. Tel: 604-892-5217.
--------------------------------	----------	---

Data Source: District of Squamish – www.squamish.ca

RESORT MUNICIPALITY OF WHISTLER

Type of Permit	Average Time for Approval	Associate Fees
Building Permit	Information regarding the Resort Municipality of Whistler’s Permit Approvals will be updated shortly. If you have further inquiries regarding the Local Permit Approvals please contact the Resort Municipality of Whistler’s municipal office at 604-935-8170 with any inquiries.	
Business License		
Development Permit		
Occupancy Permit		
Plan Amendment		
Re-Zoning Application		
Subdivision Application		

Data Source: Resort Municipality of Whistler – www.whistler.ca

ACQUISITION OF CROWN LAND

- Crown land is land that is owned by the Province of British Columbia. The Province is the steward of the land and can lease, license and sell Crown land for a variety of purposes including residential, commercial, industrial, agricultural, tourism and recreational purposes.

Company	Contact	Notes
Integrated Land Management Bureau	FrontCounterBC@gov.bc.ca	Develops Crown land parcels with values up to \$2.5 million
Ministry of Tourism, Culture and the Arts	Tel: 250-371-3952	Handles land sales related to resort development, under the All Seasons Resort Policy.
Ministry of Transportation	Tel: 250-387-3198	Handles land sales related to public airports and port authorities and the marketing of Crown land is done through MLS Realtors

- To view properties that the Federal Government of Canada has for sale, please visit: <http://reo.pwgsc.gc.ca/public/>

7. UTILITIES

WATER SYSTEM – DISTRICT OF LILLOOET

The District of Lillooet currently provides water to residents through approximately 1,100 services. These services are supplied by a water system comprised of four separate service areas. Each service area has its own supply, distribution and storage facilities.

The District's water system turns the wells on and off automatically based on demand and reservoir levels. As water demand increases in mid to late spring, the well will be called to duty intermittently and as the summer approaches and the demand for water increases further the wells run more consistently to keep the reservoirs full. In the winter, wells are not used due to low demand. Stream water is used continuously throughout the year except during high turbidity events.

WATER PRODUCTION

Name of Provider	District of Lillooet
Rated Capacity	150 m ³ /hour
Average Daily Demand	4540 m ³
Peak Demand	10000 m ³
Cost	\$0.136/m ³
Water Connection Fee: Industrial	\$250

Data Source: District of Lillooet – www.lillooetbc.com

WATER SYSTEM – VILLAGE OF PEMBERTON

The Village of Pemberton water system services the entire municipality except for the Industrial Park. This area is serviced by the Mount Currie water system. Further the Village also services the Pemberton North Improvement District which extends partially out along Pemberton Meadows Road.

Each year the Village of Pemberton sets its annual water and sewer rates by bylaw prior to issuing utility invoices. Currently, utility user-rates are calculated by establishing the annual fixed costs for general maintenance, operations and administration of the system, including inspections, repairs and weekly water sampling.

WATER PRODUCTION

Village of Pemberton	
Average Daily Demand	0.500 Mega Gallons/Day
Peak Demand	0.846 Mega Gallons/Day
Residential Cost (flat rate)	\$342.99
Industrial Cost / 1,000 Gallons	Fixed rate of \$121.61 (\$0.75/m ³ after 300m ³)
Water Connection Fee: Industrial	¾" – 1" Actual cost or \$500.00 1" – 4" Actual cost or \$2,500.00 4" – 6" Actual cost or \$4,000.00

Data Source: Village of Pemberton – www.pemberton.ca

WATER SYSTEM – DISTRICT OF SQUAMISH

Powerhouse Springs Wells are the District of Squamish's main water source for the whole municipality. The Mashiter and Stawamus Rivers are the District's backup emergency water sources.

Municipal water treatment includes chlorination, but not fluorination.

Application forms and a fee schedule are available at the reception counter at Municipal Hall. Once the application is completed, it can be returned, with payment, to the reception counter at the main hall. The application will be forwarded to the Operations Department, Water Works Section to schedule the installation.

WATER PRODUCTION

District of Squamish	
Rated Capacity	275 m ³ /second @ peak high season; 210 m ³ /second @ throughout
Average Daily Demand	~10 mL/day (winter)
Peak Demand	~17 mL/day (summer)
Residential Cost (flat rate)	\$290.00/ home annually
Industrial Cost / 1,000 Gallons	Flat fee per business type Please contact the District of Squamish at 604-892-5217
Water Connection Fee: Industrial	\$1,520.00 + installation costs

Data Source: District of Squamish – www.squamish.ca

WATER SYSTEM – RESORT MUNICIPALITY OF WHISTLER

The Resort Municipality of Whistler operates two drinking water supply and distribution systems. The water comes from both wells and streams. Due to limitations in supply during certain weather conditions, Whistler has water sprinkling regulations during the summer months.

Whistler's water is of such high quality it only requires disinfection. The Resort Municipality of Whistler consistently provides some of the safest water in Canada. The water is not fluoridated, but does have standard levels of residual chlorine. The water also has neutral pH, low turbidity (cloudiness), and excellent flavor and odour.

Whistler water is safe, clean and good tasting due to its hydrant use permit process, reservoir cleaning and inspection program and annual water main flushing program. The Resort Municipality of Whistler drinking water system is operated and maintained by qualified and certified municipal utilities department staff.

WATER PRODUCTION

Name of Provider	
-------------------------	--

Rated Capacity	Information regarding the Resort Municipality of Whistler's Water Production will be updated shortly. If you have further inquiries regarding Water Production please contact the Resort Municipality of Whistler's municipal office at 604-935-8170 with any inquiries.
-----------------------	--

Average Daily Demand	Information regarding the Resort Municipality of Whistler's Water Production will be updated shortly. If you have further inquiries regarding Water Production please contact the Resort Municipality of Whistler's municipal office at 604-935-8170 with any inquiries.
-----------------------------	--

Peak Demand	Information regarding the Resort Municipality of Whistler's Water Production will be updated shortly. If you have further inquiries regarding Water Production please contact the Resort Municipality of Whistler's municipal office at 604-935-8170 with any inquiries.
--------------------	--

Residential Cost (flat rate)	Information regarding the Resort Municipality of Whistler's Water Production will be updated shortly. If you have further inquiries regarding Water Production please contact the Resort Municipality of Whistler's municipal office at 604-935-8170 with any inquiries.
-------------------------------------	--

Industrial Cost / 1,000 Gallons	Information regarding the Resort Municipality of Whistler's Water Production will be updated shortly. If you have further inquiries regarding Water Production please contact the Resort Municipality of Whistler's municipal office at 604-935-8170 with any inquiries.
--	--

Water Connection Fee: Industrial	Information regarding the Resort Municipality of Whistler's Water Production will be updated shortly. If you have further inquiries regarding Water Production please contact the Resort Municipality of Whistler's municipal office at 604-935-8170 with any inquiries.
---	--

Data Source: Resort Municipality of Whistler – www.whistler.ca

WASTE WATER SYSTEM – DISTRICT OF LILLOOET

In the District of Lillooet, only Central Lillooet has a municipal sewer system. North, East and South Lillooet are served by private systems.

In 2004, the District of Lillooet replaced the Central Lillooet Spirogestor with a Waste Water Treatment Plant. This project was funded by the Canada/BC Infrastructure program.

SEWAGE SERVICE

Name of Provider	District of Lillooet
-------------------------	----------------------

Rated Capacity	2250 m ³ /day
-----------------------	--------------------------

Average Daily Demand	700 m ³ /day
-----------------------------	-------------------------

Peak Demand	900 m ³ /day
--------------------	-------------------------

Cost per 1000 Gallons - Industrial	\$0.414/m ³
---	------------------------

Data Source: District of Lillooet – www.lillooetbc.com

WASTE WATER SYSTEM – VILLAGE OF PEMBERTON

The Pemberton Waste Water Treatment Plant is a Class II facility that uses an actual biological process called a Sequential Batch Reactor System. Microorganisms in the tanks decompose nutrients. Clear water is decanted off the top, treated under UV light to deactivate any remaining bugs, and released into the river.

The sludge which is left behind goes into one of two aerobic digestors, aerated for 30-55 days, then is separated into solids and water. The water re-enters the plant into the treatment process. The solids, no longer resembling their original state, are collected by Carney's Waste and composted.

SEWAGE SERVICE

Village of Pemberton

Average Daily Demand	1,700m ³
Peak Demand	3,500m ³
Cost per 1000 Gallons - Industrial	Fixed rate \$193.73 (\$0.99/m ³ after 300m ³)
Sewer Connection Fee for Industrial Users	Single occupancy - \$500.00 Multiple occupancy - \$200.00/amount
Flat Fee	\$454.24

Data Source: Village of Pemberton – www.pemberton.ca

WASTE WATER SYSTEM – DISTRICT OF SQUAMISH

Municipal crews operate and maintain the Mamquam Plant as well as the Lift Stations located throughout the community of Squamish.

SEWAGE SERVICE

District of Squamish

Rated Capacity	±16,800 m ³
Average Daily Demand	8,000 m ³
Peak Demand	12,000 m ³
Cost per 1000 Gallons - Industrial	Flat fee per business type Please contact the District of Squamish at 604-892-5217
Sewer Connection Fee for Industrial Users	\$2,680 + installation cost

Data Source: District of Squamish – www.squamish.ca

WASTE WATER SYSTEM – RESORT MUNICIPALITY OF WHISTLER

The Resort Municipality of Whistler (RMOW) operates one of the most advanced wastewater treatment facilities in Canada. The process includes primary, secondary and tertiary treatment using ferrous chloride for phosphorus removal. The treated wastewater meets all the requirements of the Ministry of Environment including receiving water standards for recreational use.

Whistler’s Wastewater Treatment Plant is one of the lasting legacies of the 2010 Olympic and Paralympic Winter Games. Plans to upgrade the Wastewater Treatment Plant were also part of Whistler 2020, the resort’s community vision and sustainability plan. The Whistler2020 strategies developed by the Whistler community created the framework for a new state-of-the-art waste management system.

SEWAGE SERVICE

Name of Provider	
Rated Capacity	Information regarding the Resort Municipality of Whistler’s Sewage Service will be updated shortly. If you have further inquiries regarding Sewage Service please contact the Resort Municipality of Whistler’s municipal office at 604-935-8170 with any inquiries.
Average Daily Demand	
Peak Demand	
Cost per 1000 Gallons - Industrial	
Sewer Connection Fee for Industrial Users	

Data Source: Resort Municipality of Whistler – www.whistler.ca

LANDFILL AND WASTE MANAGEMENT

Landfill Name	Location	Capacity Left at Current Site	Plans for New Capacity
Gold Bridge Transfer Station	1.5 Northwest of Goldbridge	N/A	N/A
Lillooet Landfill	405 Landfill Road Lillooet, BC	20 years	No
Devine Transfer Station	9579 Pemberton Portage Rd Pemberton, BC	N/A	N/A
Pemberton Waste & Recycling Centre	1947 Carpenter Road Pemberton, BC	N/A	N/A
Squamish Landfill	Highway 99 Squamish, BC	8 years	Under review
Whistler Waste Transfer Station	Callaghan Valley Whistler, BC	N/A	N/A

LICENSED HAZARDOUS MATERIALS DISPOSAL

Name of Site	None Located Directly Within The Community
Number of Licensed Hazardous Waste Haulers Serving the Area	2

Data Source: Northern Development Research – www.northerndevelopment.bc.ca

ELECTRIC POWER

Provider: BC Hydro	www.bchydro.com
Enquiries to hook up new property	1-877-520-1355
Enquiries about existing properties already hooked up	1-800-224-9376
Net Importer/Exporter of Power:	Net Exporter – BC Hydro generates between 43,000 and 54,000 GWH of electricity annually.
% of Reserve Margin Including Generation & Net Purchases	8% as per WSCC guidelines plus an additional 8% surplus
Average Electrical Service Availability Index	
▪ Most Recent Year	99.940
▪ Last 5 Years	99.9314
Name of Power Pool Membership	Formal membership in WSCC, WSPP, Power Pool of Alberta (PPA), MAPP. Also active in SPP and CalPX
Source Electric Power Deregulated	Wholesale competition allowed
Residential Customers	6.80 cents per kWh for the first 1,350 kWh they use over a two-month billing period. Above that amount, customers pay 10.19 cents per kWh for the balance of the electricity used during the billing period.
Business Customers	Average Cost Per kWh
Small General Service Rate	<i>Annual peak demand less than 35kW</i>
▪ Basic Charge	19.25 cents per day
▪ All kWh	\$0.0915 per kWh
▪ Minimum Charge	The Basic Charge
▪ Rate Rider	5% Rate Rider applied to all charges, before taxes and levies.
Medium General Service Conservation Rate	<i>Annual peak demand between 85 and 150 kW</i>
▪ Basic Charge	19.25 cents per day
▪ Demand Charge	\$0.00 per kW for first 35 kW \$4.69 per kW for next 115 kW \$9.00 per kW for remaining kW
▪ Discounts	1.5% on entire bill if customer's electricity is metered at primary potential. \$0.25 per kW if customer supplies transformation from a primary to a secondary potential. If a customer is entitled to both discounts the 1.5% discount is applied first.
▪ Minimum Charge	50% of the highest maximum demand charge billed in any month within an on-peak period (1 November to 31 March inclusive) during the preceding 11 months.

▪ Rate Rider	5% Rate Rider applied to all charges, before taxes and levies.
Medium General Service Interim Rate	<i>Annual peak demand between 35 and 150 kW. MGS accounts are moving from the MGS Interim Rate to the new MGS Conservation Rate which better encourages conservation.</i>
▪ Basic Charge	\$0.1925 per day
▪ Demand Charge	\$0.00 per kW for first 35 kW \$4.69 per kW for next 115 kW \$9.00 per kW for remaining kW
▪ Energy Charge	\$0.0897 per kWh for last 14,800 kWh \$0.0490 per kWh for remaining kWh
▪ Discounts	1.5% on entire bill if customer's electricity is metered at primary potential. \$0.25 per kW if customer supplies transformation from a primary to a secondary potential. If a customer is entitled to both discounts the 1/5% discount is applied first.
▪ Monthly Minimum Charge	50% of the highest maximum demand charge billed in any month within an on-peak period (1 November to 31 March inclusive) during the preceding 11 months.
▪ Minimum Energy Charge	\$0.0281 per kWh applies when the Energy Charge (Part 1 and 2) divided by the total kWh is less than \$0.0281 per kWh.
▪ Rate Rider	5% Rate Rider applied to all charges, before taxes and levies.
Large General Service Conservation Rate	<i>Annual peak demands equal to or greater than 150 kW or total annual energy usage of at least 550,000kWh.</i>
▪ Basic Charge	\$0.1925 per day
▪ Demand Charge	\$0.00 per kW for first 35 kW \$4.69 per kW for next 115 kW \$9.00 per kW for remaining kW
▪ Energy Charge	Part 1: \$0.0937 per kWh for first 14,800 kWh \$0.0451 per kWh for remaining kWh up to baseline Part 2: \$0.0942 per kWh for usage up to 20% above baseline \$0.0942 per kWh for savings down to 20% below baseline (credit) Usage or savings beyond 20% of baseline are based on Part 1 prices
▪ Discounts	1.5% on entire bill if customer's electricity is metered at primary potential. \$0.25 per kW if customer supplies transformation from a primary to a secondary potential. If a customer is entitled to both discounts the 1.5% discount is applied first.
▪ Monthly Minimum Charge	50% of the highest maximum demand charge billed in any month within an on-peak period (1 November to 31 March

inclusive) during the preceding 11 months

▪ Minimum Energy Charge	\$0.0281 per kWh applies when the Energy Charge (Part 1 and 2) divided by the total kWh is less than \$0.0281 per kWh
▪ Rate Rider	5% Rate Rider applied to all charges, before taxes and levies
Industrial: Transmission Service	<i>Mines, chemical plants, large sawmills, pulp and paper mills, large manufacturing</i>
▪ Demand Charge	\$6.263 per kVA of billing demand
▪ Energy Charge	\$0.03261 per kWh applied to all kWh up to and including 90% of the costumers baseline load (CBL) in each billing year. \$0.07360 per kWh applied to all kWh above 90% of the CBL in each billing year.
▪ Minimum Charge	\$6.027 per KVa of billing demand per billing period
▪ Rate Rider	5% Rate Rider applied to all charges, before taxes and levies.

Data Source: BC Hydro "Rates" – www.bchydro.com

NATURAL GAS

Fortis	www.fortisbc.com
Rate Territory	Inland
Firm Contract Rates (2010)	
Type of Customer	Small Commercial (2U)
Basic & Administration Charge (Monthly)	\$24.84 (CDN)
Delivery & Commodity Demand Charge (per GJ)	\$9.19 (CDN)

Data Source: Fortis BC – "Rate Schedules" – www.fortisbc.com

TELECOMMUNICATIONS

Name of Provider	Telus
Address	#5-3777 Kingsway Burnaby, BC V5H 3Z7
Website	www.telus.com
Contact Number	
▪ Residential	250-310- 2255
▪ Business	250-310-3100
Service Characteristics of The Office:	
▪ Switch Technology	Digital
▪ Fiber Service provided	No
▪ 100 Mbps LAN Service Available	No
▪ Monitoring- Remotely or On-Site	Remotely
▪ ISDN Available	No
▪ ADSL Available	Yes
▪ ADSL Available From Switch	No
▪ Central Office on Self-Healing Fiber Ring	No
▪ Dual Feed from Two Separate Switching Offices	No
▪ Multiple Route Diversity	No

Name of Provider	Shaw Communications Inc.
Address	#900-1067 Cordova St W, Vancouver, BC V6C 3T5
Website	www.shaw.ca
Contact Number	
▪ Residential	Tel: 604-629-3300

Name of Provider	Rogers Communications Inc.
Address	#1600- 4710 Kingsway, Burnaby, BC V5H 4W4
Website	www.rogers.com
Contact Number	
▪ Residential	Tel: 1-888-ROGERS1 (764-3771)
▪ Business	Tel: 1-800-850-4217

Name of Provider	Bell Mobility Inc.
Address	Highlands Centre, 1900 Garibaldi Way , #1A, Squamish, BC V0N 1T0
Website	www.bell.ca
Contact Number	
▪ Residential	Tel: 1-800-667-0123

Data Source: Northern Development Research – www.northerndevelopment.bc.ca

In the Gold Bridge / Bralorne Area, high speed internet service is available through the Minto Communications Society (www.mintocomm.ca). For rural areas around Lillooet, high speed internet services are available from Xplornet Communications (www.xplornet.com) or through the Lytton Area Wireless Society (www.lyttonnet.com).

8. BUSINESS SUPPORT SERVICES

Business Support Services	
Machine Shop (Tool & Die)	4
Welding	5
Office Equipment Service & Repair	1
Temporary Employment Services	1
International Support Services	
Import/Export Brokers	0
International Courier Services	5
Freight Forwarders	1

Data Source: Trade and Invest British Columbia “Community Profile” – www.britishcolumbia.ca/invest

9. GOVERNMENT

MUNICIPAL GOVERNMENT

District of Lillooet

Form (Structure)	Mayor and Council
Number of Elected Officials	5
Mayor	Dennis Bontron
Chief Administrative Officer	Grant Loyer

Village of Pemberton

Form (Structure)	Mayor and Council
Number of Elected Officials	5
Mayor	Jordan Sturdy
Chief Administrative Officer	Daniel Sailland



Photo courtesy of Doug Matthews

District of Squamish

Form (Structure)	Mayor and Council
-------------------------	-------------------

Number of Elected Officials	7
------------------------------------	---

Mayor	Rob Kirkham
--------------	-------------

Chief Administrative Officer	Corien Speaker
-------------------------------------	----------------

Resort Municipality of Whistler

Form (Structure)	Mayor and Council
-------------------------	-------------------

Number of Elected Officials	7
------------------------------------	---

Mayor	Nancy Wilhelm-Morden
--------------	----------------------

Chief Administrative Officer	Mike Furey
-------------------------------------	------------

REGIONAL DISTRICT

Squamish-Lillooet Regional District

Form (Structure)	Board of Directors
-------------------------	--------------------

Number of Elected Directors	4
------------------------------------	---

Number of Appointed Directors	5 (one each from Whistler, Pemberton and Lillooet, two from Squamish)
--------------------------------------	---

Chair	Patricia Heintzman
--------------	--------------------

Chief Administrative Officer	Lynda Flynn
-------------------------------------	-------------

PROVINCIAL

Government of British Columbia

Form (Structure)	British Parliamentary
Number of Elected Officials	85
How Often Does Legislature Convene	2013 – Feb 13,14,18-21,25-28; Mar 4-7,11-14, Apr 8-11,15-18,22-25, 29,30; May 1,2,6-9,13-16,27-30; Oct 7-10,21-24,28-31; Nov 4-7,18-21,25-28

PREMIER

Name	Christy Clark
Affiliation	British Columbia Liberal Party
Year Elected	May 2011
Current Term Expiration	4 Months
Allowed to Run for Another Term	Yes
Next Election Date	Tuesday, May 14, 2013

PROVINCIAL GOVERNMENT REPRESENTATION

Name of Member of Legislative Assembly (MLA)	Joan McIntyre
Total Members of Legislative Assembly	1
Electoral District	West Vancouver – Sea to Sky
Party Affiliation	BC Liberal Party

Name of Member of Legislative Assembly (MLA)	Harry Lali
Total Members of Legislative Assembly	1
Electoral District	Fraser-Nicola
Party Affiliation	New Democratic Party of BC

FEDERAL GOVERNMENT REPRESENTATION

Name of Member of Parliament (MP)	John Weston
Electoral District	West Vancouver – Sunshine Coast – Sea to Sky Country
Year Elected	October 14, 2008
Party Affiliation	Conservative Party of Canada

Name of Member of Parliament (MP)	Mark Strahl
Electoral District	Chilliwack – Fraser Canyon
Year Elected	October 14, 2008
Party Affiliation	Conservative Party of Canada

SENATORS

No. of Appointed Officials	In Canada there are ordinarily 105 Senators appointed by the Governor General on the advice of the Prime Minister.
-----------------------------------	--



Photo Courtesy of : Belinda Moen

10. HOUSING

HOUSING CHARACTERISTICS

Dwelling Type	Lillooet	Pemberton	Squamish	Whistler	Area A	Area B	Area C	Area D
Single-detached houses	879	115	3,015	970	120	230	557	240
Semi-detached houses	10	130	439	371	0	10	30	15
Apartments, duplex	80	625	1,805	2,514	0	0	100	30
Other dwellings	0	65	360	59	0	20	103	75
Number of owned dwellings	765	615	4,285	2,145	100	225	625	270
Number of rented dwellings	215	330	1,335	1,760	20	35	170	85
Number of dwellings constructed before 1986	785	150	3,290	1,550	95	165	415	195
Number of dwellings constructed between 1986 and 2006	195	795	2,330	2,355	25	90	375	170
Total # of Private Dwellings	985	945	5,625	3,910	120	260	790	360

Data Source: StatsCan – 2006 Census – “Community Profile”

AVERAGE HOUSING VALUES

Municipality	Single Family Homes	Multi-Family Homes	Total Property Tax & Charges
District of Lillooet	\$167,378	-	\$2,737
Village of Pemberton	\$421,483	\$246,991	\$3,495
District of Squamish	\$479,692	\$313,675	\$3,632
Municipality of Whistler	\$906,528	\$554,969	\$6,953
Electoral Area A	\$180,460	-	-
Electoral Area B	\$331,932	-	-
Electoral Area C	\$591,888	-	-
Electoral Area D	\$593,652	-	-

Data Source: StatsCan – 2006 Census – “Community Profile”

11. TAXATION

CORPORATE INCOME TAX

	Small Business	Manufacturing	Non-Manufacturing
Federal			
▪ Rate	11%	16.5%	16.5%
▪ Formula (Sales, Property & Payroll)	n/a	n/a	n/a
▪ Accelerated Depreciated Permitted	Yes	Yes	Yes
Provincial			
▪ Rate	2.5%	10.0%	10.0%
▪ Formula (Sales, Property & Payroll)	Sales & Payroll	Sales & Payroll	Sales & Payroll
▪ Accelerated Depreciated Permitted	No	No	No
Local			
<i>British Columbia has no local taxes</i>			
Total Federal and Provincial Corporate Income Tax	13.5%	26.5%	26.5%

PERSONAL INCOME TAX

	Federal	State/Provincial	Local
Earned Income	15 – 29%	5.06 – 14.7%	0%
Unearned Income (e.g. Dividends)	0 – 14.55%	0 – 3.92%	0%
Capital Gains	7.5 – 14.5 %	2.08 – 7.35%	0%

SALES / USE TAX

	Rate	Notes
Harmonized Sales Tax	12%	HST on business inputs is fully recoverable
Local	0%	BC has no local sales tax
Total (Effective Combined Rate) Business	7%	Net of GST 0% for production machinery and equipment for eligible manufacturers

SALES TAX RATE BY UTILITY

	Yes/No	Rate	Notes
Electric Power	Yes	12%	HST is fully recoverable
Natural Gas	Yes	12%	HST is fully recoverable
Fuel Oil	Yes	12%	HST is fully recoverable
Water	No	0%	-
Sewer	No	0%	-
Hazardous Waste Disposal	Yes	12%	HST is fully recoverable

TELEPHONE SUBJECT TO SALES/USE TAX

	Yes/No	Rate	Notes
Local	Yes	12%	HST is fully recoverable
Long Distance	Yes	12%	HST is fully recoverable

MACHINERY AND EQUIPMENT SUBJECT TO SALES/USE TAX

	Yes/No	Rate	Notes
Production	No	0%	-
Non-Production	Yes	12%	HST is fully recoverable
Pollution Control	Yes	12%	HST is fully recoverable
Office Equipment & Fixtures	Yes	12%	HST is fully recoverable

SALES/USE TAX ON TANGIBLE PROPERTY

	Yes/No	Rate	Notes
Office Building Construction Materials	Yes	12%	HST is fully recoverable
Industrial Building Construction Materials	Yes	12%	HST is fully recoverable
Manufactures Raw Materials	No	0%	-
Standard Software	Yes	12%	HST is fully recoverable
Custom Software	Yes	12%	HST is fully recoverable

SALES/USE TAX ON INTANGIBLE PROPERTY

	Yes/No	Rate	Notes
Accounts Receivable	No	0%	-
Capital Stock	No	0%	-
Stock/Bond Transaction Fee	No	0%	-

PROPERTY TAX

DISTRICT OF LILLOOET

Levy	Residential	Utility	Major Industry	Light Industry	Business	Non-Profit	Farm
General Municipal	4.2315	32.7941	22.8500	13.1176	13.1176	4.2315	4.2315
Municipal Capital Asset Replacement	0.2907	2.2534	1.5700	0.9013	0.9013	0.2907	0.2907
Total Municipal "A" and "B"	4.5222	35.0475	24.4200	14.0189	14.0189	4.5222	4.5222
Debt	0.2658	2.0600	1.4353	0.8240	0.8240	0.2658	0.2658
Regional Hospital District	0.3424	1.1984	1.1642	1.1642	0.8389	0.3424	0.3424
Regional District Land and Improvements	0.7383	2.5839	2.5101	2.5101	1.8087	0.7383	0.7383
Regional District Improvements Only	0.0588	0.2057	0.1999	0.1999	0.1440	0.0588	0.0588
TOTAL	10.4497	76.143	54.1495	32.736	31.6534	10.4497	10.4497

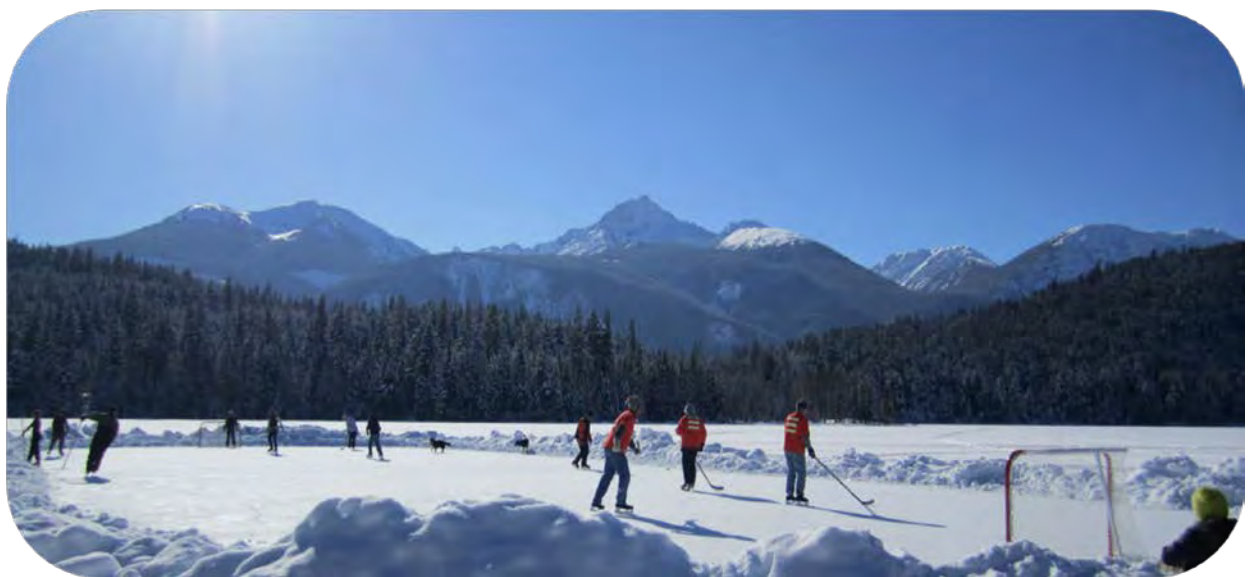


Photo courtesy of: www.bridgerivervalley.ca

VILLAGE OF PEMBERTON

Levy	Residential	Utility	Light Industry	Business	Non-Profit	Farm
School Tax	1.7479	14.2000	6.4000	6.4000	3.4000	6.900
Village of Pemberton	2.1550	12.9301	7.3268	4.8488	2.1550	2.1550
Regional District	1.4604	8.7626	4.9655	3.5781	1.4604	1.4604
Regional Hospital District	0.0211	0.0738	0.0717	0.0516	0.0211	0.0211
Sea to Sky Regional Hospital District	0.0345	0.1207	0.1172	0.0845	0.0345	0.0345
BCAA	0.0599	0.5113	0.1843	0.1843	0.0599	0.0599
MFA	0.0002	0.0007	0.0007	0.0005	0.0002	0.0002
Policing Tax	0.2578	0.9024	0.8766	0.6317	0.2578	0.2578
Community Enhancement Levy	0.0458	0.2745	0.1556	0.1030	0.0458	0.0458
Economic Development Levy	0.0561	0.3365	0.1906	0.1262	0.0561	0.0561
TOTAL	5.8386	38.1125	20.2890	16.0086	7.4908	10.9908

DISTRICT OF SQUAMISH

Levy	Residential	Utility	Major Industry	Light Industry	Business	Non-Profit	Farm
General Municipal	4.270980	39.947691	27.447696	15.019550	11.669316	5.140241	116.452550
Library Bylaw	0.052304	0.052304	0.052304	0.052304	0.052304	0.052304	0.052304
Total Municipal	4.323284	39.999995	27.500000	15.071854	11.721620	5.192545	116.504854
Regional District	0.306485	1.072698	1.042049	1.042049	0.750888	0.306485	.306485
Regional Hospital	0.055582	0.194537	0.188979	0.188979	0.136176	0.055582	0.055582
MFA	0.000200	0.000700	0.000700	0.000700	0.000500	0.000200	0.000200
BCAA	0.059900	0.511300	0.511300	0.184300	0.184300	0.059900	0.059900
School	1.747900	14.200000	6.400000	6.400000	6.400000	3.400000	6.900000
TOTAL	10.816635	95.979225	63.143028	37.959736	30.915104	14.207257	240.3319

RESORT MUNICIPALITY OF WHISTLER

Levy	Residential	Utility	Industrial	Business	Seasonal
General Municipal	2.6913	20.4703	11.9074	10.3895	9.966
School	1.7479	14.2000	2.5600	6.4000	3.400
Regional District	0.0500	0.3779	0.2063	0.1964	0.2051
Regional Hospital	0.0557	0.1950	0.1894	0.1365	0.0557
BCAA	0.0599	0.5113	0.1843	0.1834	0.0599
MFA	0.0002	0.0007	0.0007	0.0005	0.0002
TOTAL	4.6048	35.7545	15.0474	17.3067	13.6867

*Data Source: Northern Development Research – www.northerndevelopment.bc.ca
 Property Tax rates effective 2012, Property Tax rates per \$1000 Assessed Personal Property (M&E, Inventory, Other)
 Municipal Note: BC does not have Personal Property Taxes.*



12. INTERNATIONAL RESOURCES

INVESTMENT AND BUSINESS SUPPORT OFFICES

Lillooet & District Chamber of Commerce

Contact Name	Scott Hutchinson
Address	PO Box 650, Lillooet, BC V0K 1V0
Phone Number	Tel: 250-256-3578
E-Mail	info@lillooetchamberofcommerce.com

Pemberton & District Chamber of Commerce

Contact Name	Karen Ross
Address	PO Box 370, Pemberton, BC V0N 2L0
Phone Number	Tel: 604-894-6477
E-Mail	info@pembertonchamber.com

Squamish Chamber of Commerce

Contact Name	Elliot Moses
Address	102-38551 Loggers Lane, Squamish, BC V8B 0H2
Phone Number	Tel: 604-815-4991
E-Mail	elliott@squamishchamber.com

Whistler Chamber of Commerce

Contact Name	Fiona Famulak
Address	201-4230 Gateway Drive, Whistler, BC V0N 1B4
Phone Number	Tel: 604-932-5922
E-Mail	chamber@whistlerchamber.com

Bridge River Valley Economic Development Society

Contact Name	Michelle Nortje, Acting President
Address	104 Haylmore Avenue, Gold Bridge, BC V0K 1P0
Phone Number	Tel: 250-238-2534
E-Mail	bridgerivervalley@gmail.com

Northern Development Initiative Trust

Contact Name	Dean Mckinley, Director, Economic Development
Address	301 – 1268 Fifth Avenue, Prince George BC V2L 3L2
Phone Number	Tel: 250-561-2525
E-Mail	dean@northerndevlopment.bc.ca

Community Futures Sun Country

Address	PO Box 1480 - 203 Railway Avenue, Ashcroft, BC V0K 1A0
Phone Number	Tel: 250-453-9165
Webpage	www.cfsun.ca

Community Futures Howe Sound

Address	102 – 1909 Maple Drive, Squamish, BC V8B 0T1
Phone Number	Tel: 604-892-5467
Webpage	www.cfhowesound.com

Ministry of Jobs, Tourism and Skills Training – Regional Economic Operations

Contact Name	Regional Economic Operations Department
Address	PO Box 9837 Stn Prov Govt, Victoria, BC V8W 9T1
Phone Number	Tel: 250-952-6475
E-Mail	marilyn.rundell@gov.bc.ca

Ministry of Jobs, Tourism and Skills Training – International Investment and Company Attraction

Contact Name	Michael Track, Director, Developed Markets
Address	999 Canada Place, Suite 730, Vancouver BC V6C 3E1
Phone Number	Tel: 604-775-2202
E-Mail	michael.track@gov.bc.ca

FINANCIAL INSTITUTIONS

Name of Company	Address	Phone Number	Website
Canadian Imperial Bank of Commerce	1901 Garibaldi Way Squamish, BC	800-465-2422	www.cibc.com
Canadian Imperial Bank of Commerce	649 Main St. Lillooet, BC	250-256-4221	www.cibc.com
Credit Union Central of BC	4321 Village Gate Blvd. Whistler, BC	604-982-8000	www.nscu.com
Interior Savings Credit Union	674 Main St. Lillooet, BC	250-256-4238	www.interiorsavings.com
North Shore Credit Union	40147 Glenalder Pl. Squamish, BC	604-982-8000	www.nscu.com
North Shore Credit Union	7438 Prospect St. Pemberton, BC	604-982-8000	www.nscu.com
Royal Bank of Canada	38100 Second Ave. Squamish, BC	604-892-3555	www.rbcroyalbank.com
Royal Bank of Canada	101-4000 Whistler Way Whistler, BC	604-938-5800	www.rbcroyalbank.com
Scotiabank	38049 Cleveland Ave. Squamish, BC	604-892-2150	www.scotiabank.com
Scotiabank	7433 Propect St. Pemberton, BC	604-894-1050	www.scotiabank.com
Scotiabank	212-2059 Lake Placid Rd. Whistler, BC	604-996-3230	www.scotiabank.com
Squamish Savings – Vancity	1325 Pemberton Ave. Squamish, BC	604-892-8350	www.vancity.com
TD Bank Finacial Group	210 – 1200 Hunter Pl. Squamish, BC	604-892-8300	www.td.com
TD Bank Financial Group	138 - 4370 Lorimer Rd. Whistler, BC	604-905-5500	www.td.com

Data Source: Northern Development Research – www.northerndevelopment.bc.ca



EMPLOYMENT ASSISTANCE

Name of Company	Address	Phone Number	Website
Squamish Service Canada Centre	1440 Winnipeg St. Squamish, BC V8B 0B2	604-898-4100	www.servicecanada.gc.ca
Whistler Scheduled Outreach Site	4230 Gateway Dr. Whistler, BC V0N 1B4	855-881-9874	www.servicecanada.gc.ca
Kamloops Service Canada Centre	317 Seymour St. Kamloops, BC V2C 2E8	800-277-9914	www.servicecanada.gc.ca
Lillooet Employment Centre	639B Main St. Lillooet, BC V0K 1V0	250-256-7753	www.lillooetesc.ca
Whistler Employment Resource Centre	201-4230 Gateway Dr. Whistler, BC V0N 1B4	604-932-6281	www.whistlerchamber.com

Data Source: Northern Development Research – www.northerndevelopment.bc.ca



Photo courtesy of: www.bridgerivervalley.ca

AIR TRANSPORTATION SERVICE

Largest International Airport	Vancouver
Distance to Airport (from SLRD head office)	170 km
Customs Point of Entry	Yes
Foreign Trade Zone	No
Full Instrumentation	Yes
No. of Runways	3
Runway Length	3,030 m; 3,500 m; 2,225 m
Carriers	
▪ Passenger	62 (Including 13 code share)
▪ Cargo	6
▪ Charter	8 (Included in Passenger carriers)
Weekly Non-Stop Flights	4,289 departures



13. QUALITY OF LIFE

CLIMATE

Location: Squamish-Lillooet Regional District

Lillooet: 50.690803 N, -121.937313 W

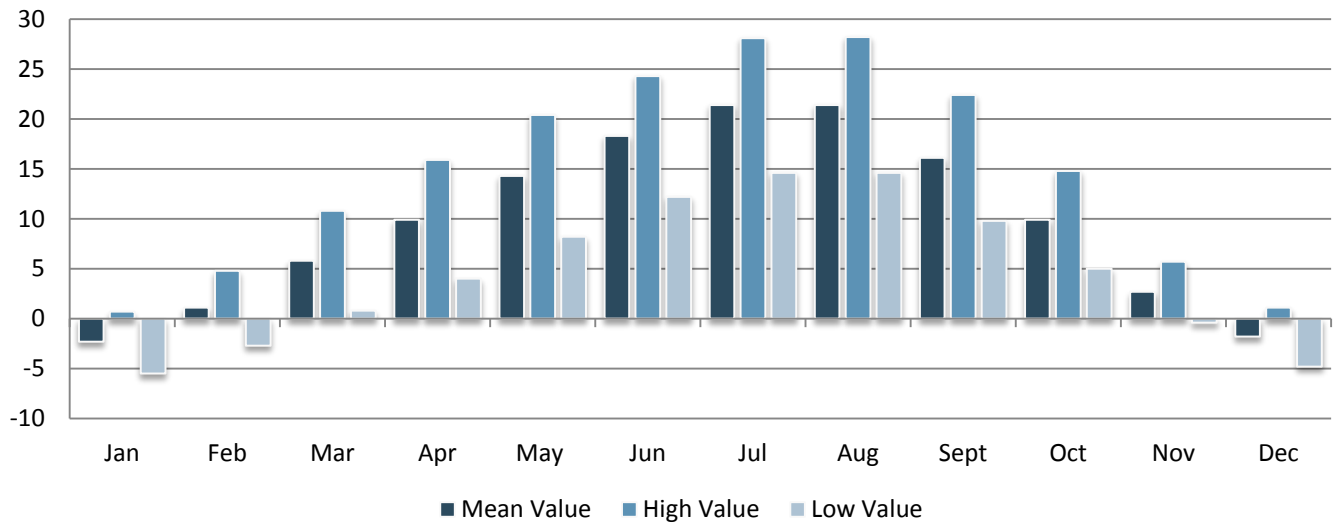
Pemberton: 50.323162 N, -122.805448 W

Squamish: 49.718264 N, -123.156967 W

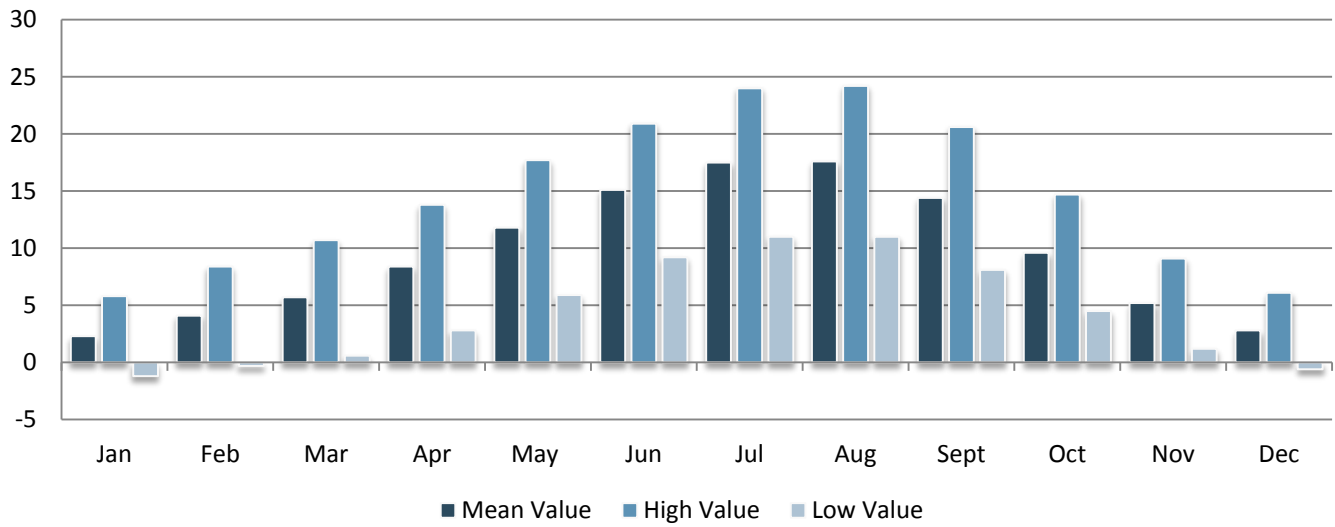
Whistler: 50.125421 N, -122.954979 W



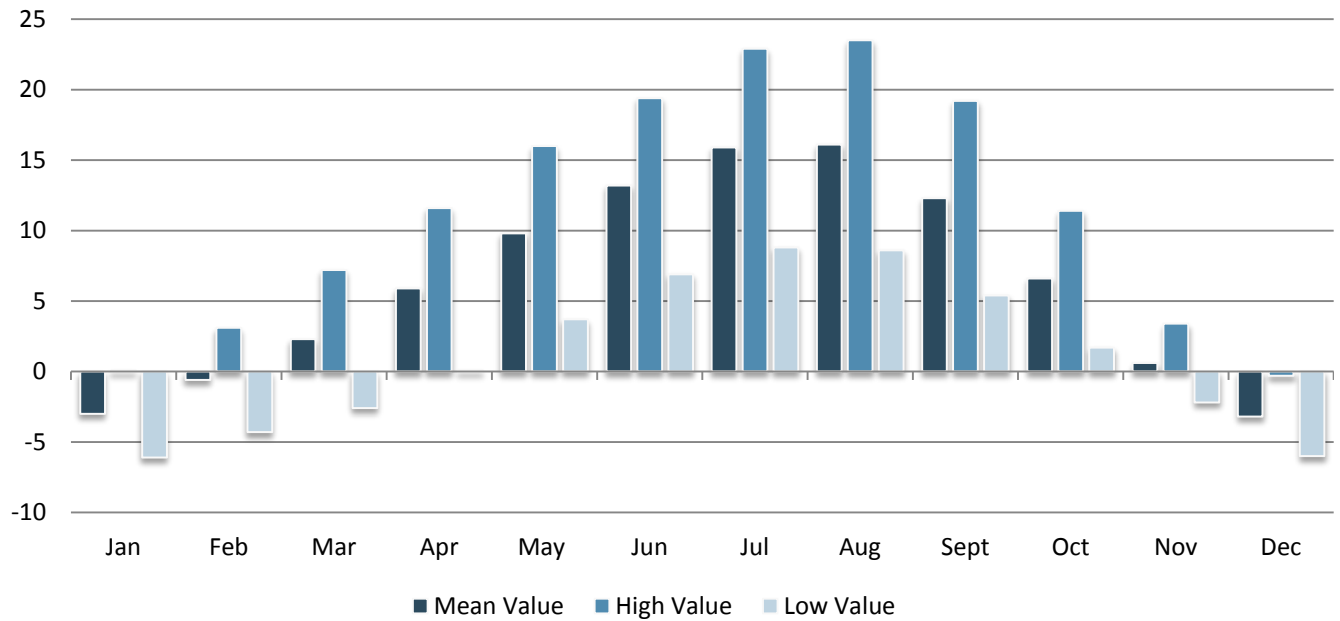
AVERAGE TEMPERATURE IN DEGREES CELSIUS BY MONTH - LILLOOET



AVERAGE TEMPERATURE IN DEGREES CELSIUS BY MONTH - SQUAMISH



AVERAGE TEMPERATURE IN DEGREES CELSIUS BY MONTH – WHISTLER



Data Source: Environment Canada - "National Climate Data And information Archive" – <http://www.climate-charts.com/Countries/Canada.html#BC>



CULTURE

TOP ANNUAL EVENTS

Community	Top Events	Date(s)
Gold Bridge / Bralorne	Winterfest	February
Gold Bridge / Bralorne	Summerfest	August
Gold Bridge / Bralorne	Bralorne Farmers' Market	June-September
Lillooet	Apricot Tsaqwem Festival	July
Lillooet	Beer and Wine Festival	September
Lillooet	Canada Day Celebration	July 1 st
Lillooet	Lillooet Farmers' Market	May-October
Lillooet	May Day Parade	May
Lillooet	Salmon in the Canyon Festival	August
Lillooet	Sturgeon Derby	July
Pemberton	Annual Flying Club Fly-In	July
Pemberton	Augustfest	August
Pemberton	Earth Hour Pemberton	March
Pemberton	Equi-fest	September
Pemberton	In-SHUCK-ch First Nations Festival	August
Pemberton	Pemberton Farmers' Market	June-October
Pemberton	Pemberton Winterfest	December
Pemberton	Slow Food Cycle Sunday	August
Squamish	Annual Youth Triathlon	May
Squamish	Canada Day in Squamish	July 1 st
Squamish	Howe Sound Music Festival	April
Squamish	Santa Parade	December
Squamish	Squamish Annual Youth Festival	May
Squamish	Squamish Days Loggers Sports Festival	August
Squamish	Squamish Farmers' Market	June-October
Squamish	Squamish Mountain Festival	July
Squamish	Squamish Station World Championship Chair Carve	August
Whistler	Canada Day Celebration	July 1 st
Whistler	Cornucopia Celebration of Wine and Food	November
Whistler	Crankworx Mountain Bike Festival	August

Whistler	GranFondo	September
Whistler	Independence Day Fireworks	July 4 th
Whistler	National Aboriginal Day Celebration	June
Whistler	The Spirit Within First Nations Festival	September
Whistler	Whistler Children's Art Festival	July
Whistler	Whistler Farmers' Market	June – October
Whistler	Whistler Film Festival	December
Whistler	Whistler Half Marathon	June
Whistler	Whistler Readers and Writers Festival	October
Whistler	Whistler Spirit Run	September
Whistler	Whistler Spirit Run	September
Whistler	Winter Kick-Off Concert	November
Whistler	World Ski and Snowboard Festival	April

Data Source: Northern Development Research – www.northerndevelopment.bc.ca

CULTURAL PLACES AND AMENITIES

Amenity	Number
▪ Art Galleries	2
▪ Community Halls	7
▪ Libraries	6
▪ Museums	5
▪ National Historic Sites	8
▪ Theatres	4

Data Source: Northern Development Research
www.northerndevelopment.bc.ca



Amenity	Activity	Location
▪ Gun Lake	Camping, Boating, Fishing, Hiking, Mountain Biking, Waterskiing, Wakeboarding	Gold Bridge/Bralorne
▪ Gwyneth Lake Provincial Park	Camping, Canoeing, Fishing, Hunting	Gold Bridge/Bralorne
▪ Kingdom Lake	Camping, Fishing, Hiking, Mountain Biking	Gold Bridge/Bralorne
▪ South Chilcotin Mountains Provincial Park	Camping, Hiking, Mountain Biking, Horseback Riding, Fishing, Hunting, Ski Touring	Gold Bridge/Bralorne
▪ Sunshine Mountain	Snowmobiling, Ski Touring, Mountain Biking	Gold Bridge/Bralorne

▪ Tyaughton Lake	Camping, Boating, Fishing, Hiking, Mountain Biking	Gold Bridge/Bralorne
▪ Cayoosh Creek Campground	Camping	Lillooet
▪ Fraser Cove Campground	Camping	Lillooet
▪ Fred Antoine Provincial Park	Hiking, Hunting	Lillooet
▪ Lillooet REC Centre	Sporting, Swimming, Hockey	Lillooet
▪ Lillooet Sheep Pasture Golf Course	Golfing	Lillooet
▪ Lillooet Skateboard Park	Skateboarding, Biking	Lillooet
▪ Pavilion Lake, Crown Lake, Fountain Lake	Fishing, Hiking, Camping, Boating	Lillooet
▪ Seton Lake	Swimming, Canoeing, Kayaking, Camping	Lillooet
▪ Yalakom Provincial Park	Hiking, Mountain Biking, Hunting	Lillooet
▪ Anderson Lake Recreation Area	Swimming, Boating, Waterskiing, Wakeboarding, Sailing, Windsurfing, Fishing	Pemberton
▪ Big Sky Golf and Country Club	Golfing	Pemberton
▪ Birkenhead Lake Provincial Park	Camping, Boating, Fishing, Swimming, Hiking, Biking	Pemberton
▪ Joffre Lakes Provincial Park	Hiking, Camping, Swimming, Climbing, Fishing, Ski Touring	Pemberton
▪ Nairn Falls Provincial Park	Hiking, Camping	Pemberton
▪ Pemberton Skate Park	Biking, Skateboarding	Pemberton
▪ Sea to Sky Trail	Walking, Hiking, Biking	Pemberton
▪ The Meadows at Pemberton	Golfing	Pemberton
▪ World Class Mountain Biking Trail Network	Mountain Biking	Pemberton
▪ Alice Lake Provincial Park	Hiking, Camping, Swimming	Squamish
▪ Brennan Park Recreation Centre	Swimming, Hockey, Skating	Squamish
▪ Britannia Beach	Swimming, Canoeing, Kayaking	Squamish
▪ Garibaldi Provincial Park	Hiking, Camping, Swimming	Squamish
▪ Sea to Sky Trail	Walking, Hiking, Biking	Squamish
▪ Squamish Adventure Centre	Multipurpose	Squamish
▪ Squamish Municipal Campground	Camping	Squamish
▪ Squamish Valley Golf Course	Golfing	Squamish
▪ Stawamus Chief Provincial Park	Hiking, Camping, Climbing	Squamish
▪ World Class Mountain Biking Trail Network	Mountain Biking	Squamish
▪ Callaghan Valley/Whistler Olympic Park	Camping, Fishing, Hiking, Biking, Skiing, Snowshoeing	Whistler
▪ Fairmont Chateau Whistler Golf Club	Golfing	Whistler

▪ Garibaldi Provincial Park	Hiking, Camping	Whistler
▪ Lost Lake Cross Country Trails	Cross Country Skiing, Snowshoeing, Hiking, Biking	Whistler
▪ Meadow Park Sports Centre	Hockey, Swimming, Fitness	Whistler
▪ Nicklaus North Golf Course	Golfing	Whistler
▪ Sea to Sky Trail	Hiking, Biking, Cross Country Skiing	Whistler
▪ The Valley Trail	Hiking, Walking, Biking	Whistler
▪ Whistler Blackcomb	Skiing, Snowboarding, Mountain Biking, Hiking, Sightseeing	Whistler
▪ Whistler Golf Club	Golfing	Whistler
▪ Whistler Skate Park	Skateboarding, Rollerblading, Biking	Whistler
▪ World Class Mountain Biking Trail Network	Mountain Biking	Whistler

Data Source: Northern Development Research – www.northerndevelopment.bc.ca



HEALTH

HOSPITALS

Hospital	Squamish General Hospital
Teaching Hospital	Yes
Number of Beds	23
Outpatient Clinic	Yes
Contact	38140 Behrner Dr. Squamish, BC V8B 0J3 Tel: 604-892-5211

Hospital	Lillooet Hospital & Health Centre
Teaching Hospital	Yes
Number of Beds	28
Outpatient Clinic	Yes
Contact	851 Murray St., Bag 300 Lillooet, BC V0K 1V0 Tel: 250-256-4233

Hospital	Whistler Health Care Centre
Teaching Hospital	Yes
Number of Beds	18
Outpatient Clinic	No
Contact	4380 Lorimer Rd. Whistler, BC V0N 1B4 Tel: 604-932-4911

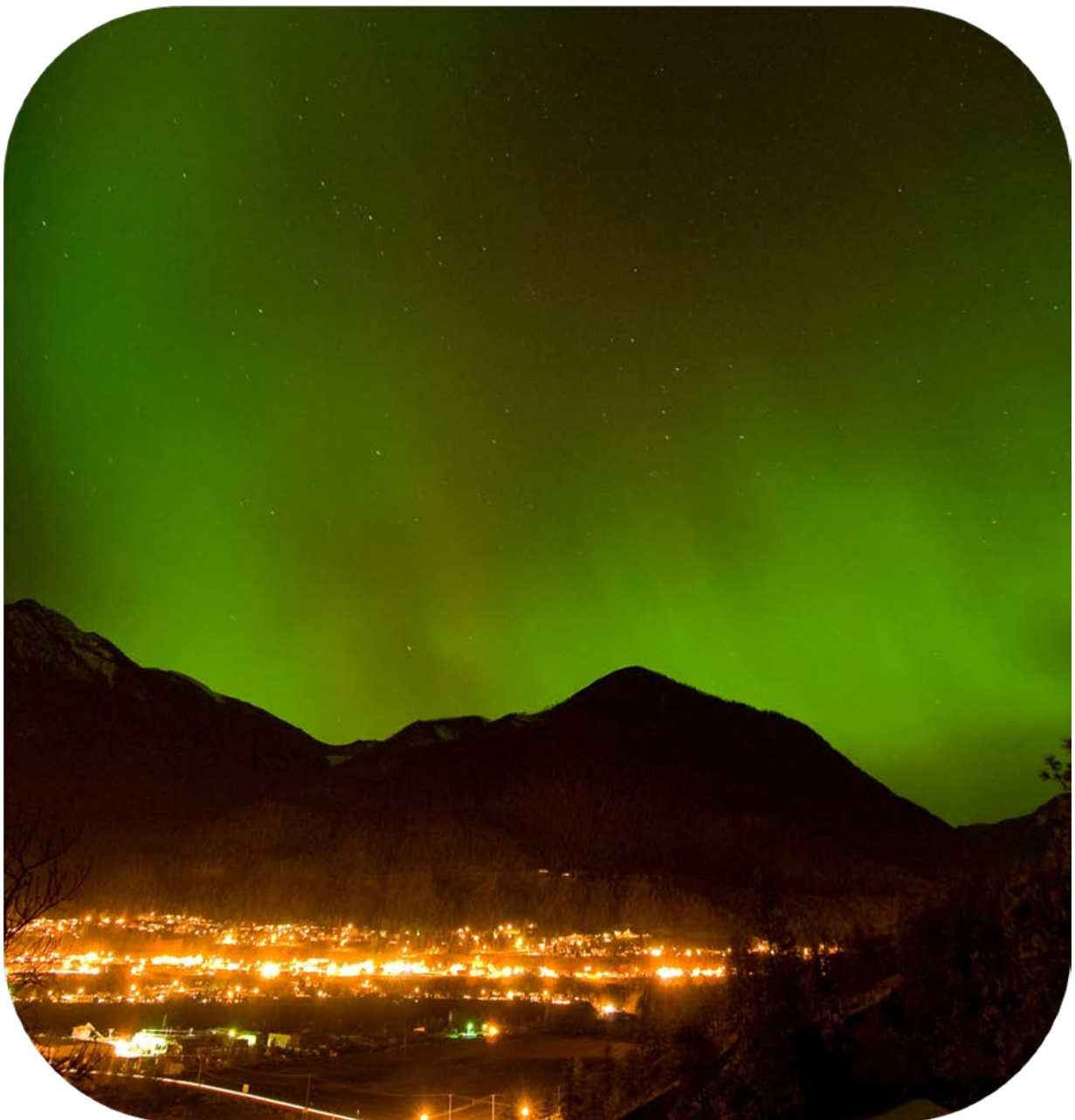
Hospital	Pemberton Health Centre
Teaching Hospital	Yes
Number of Beds	-
Outpatient Clinic	No
Contact	1403 Portage Rd. Pemberton, BC V0N 2L0 Tel: 604-894-6633

Data Source: Northern Development Research – www.northerndevelopment.bc.ca

PHYSICIANS AND DENTISTS

Health Providers	Number
Physicians	57
Dentists	23

Data Source: Northern Development Research – www.northerndevelopment.bc.ca





Lynda Flynn

Chief Administrative Officer

Squamish-Lillooet Regional District

PO Box 129, 1350 Aster Street, Pemberton, BC V0N 2L0

Tel: 604-894-6371

Email: lflynn@slrd.bc.ca

www.slrd.bc.ca



Northern Development Initiative Trust

Contact for information on financial incentives for manufacturing companies

www.northerndevelopment.bc.ca



**TRADE AND INVEST
BRITISH COLUMBIA**

Invest BC

Contact for investor site selection and expansion services.

www.investbc.com