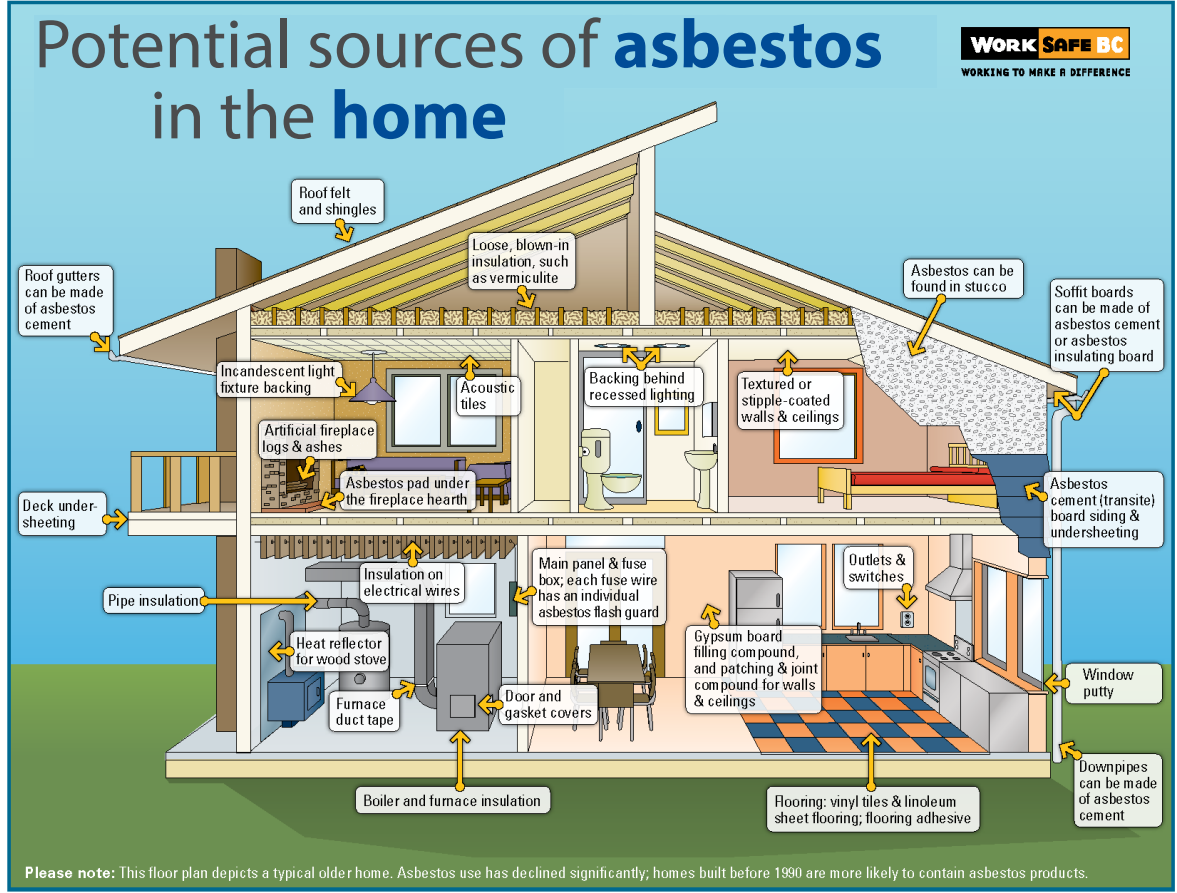


# Does Your Construction Waste Contain Asbestos?

Beginning November 1<sup>st</sup>, the Pemberton Transfer Station will no longer accept drywall. Additionally the Whistler Transfer Station will not accept drywall containing asbestos.

Please see the reverse side for more details.



# Protect Yourself and Your Workers from Asbestos Exposure

Unprotected workers exposed to Asbestos-contaminated air can breathe in the fibers which may cause serious health problems, such as lung disease and cancer. Demolition or renovation projects in pre-1990 buildings often include Asbestos-containing materials which require proper disposal.

The Pemberton Transfer Station no longer accepts gypsum (drywall) due to space, employee safety concerns and budget limitations. Residents or contractors wishing to dispose of newer (post-1990) asbestos-free gypsum (drywall) can take it to the Whistler Transfer Station in the Callaghan Valley.

## Drywall accepted at the Whistler Transfer Station must be:

- Date stamped or accompanied by an analytical test indicating that “no trace” of asbestos was found; and
- Clean of any texture coat or drywall joint compounds.

Should contractors or residents discover through analytical testing that they are dealing with older waste (pre-1990) asbestos drywall, please review the Province’s Hazardous Waste Regulation or contact an asbestos abatement company to deal with this hazardous material on your behalf. For a list of testing and abatement companies go to [www.slrld.bc.ca/asbestos](http://www.slrld.bc.ca/asbestos)

**For more information, please contact the SLRD Utilities & Environmental Services Department**

(604) 894-6371 ● 1-800-298-7753 ● [utilities@slrd.bc.ca](mailto:utilities@slrd.bc.ca) ● [www.slrld.bc.ca/asbestos](http://www.slrld.bc.ca/asbestos)