

Map 4: Cheakamus Canyon to Black Tusk

SEA to SKY TRAIL

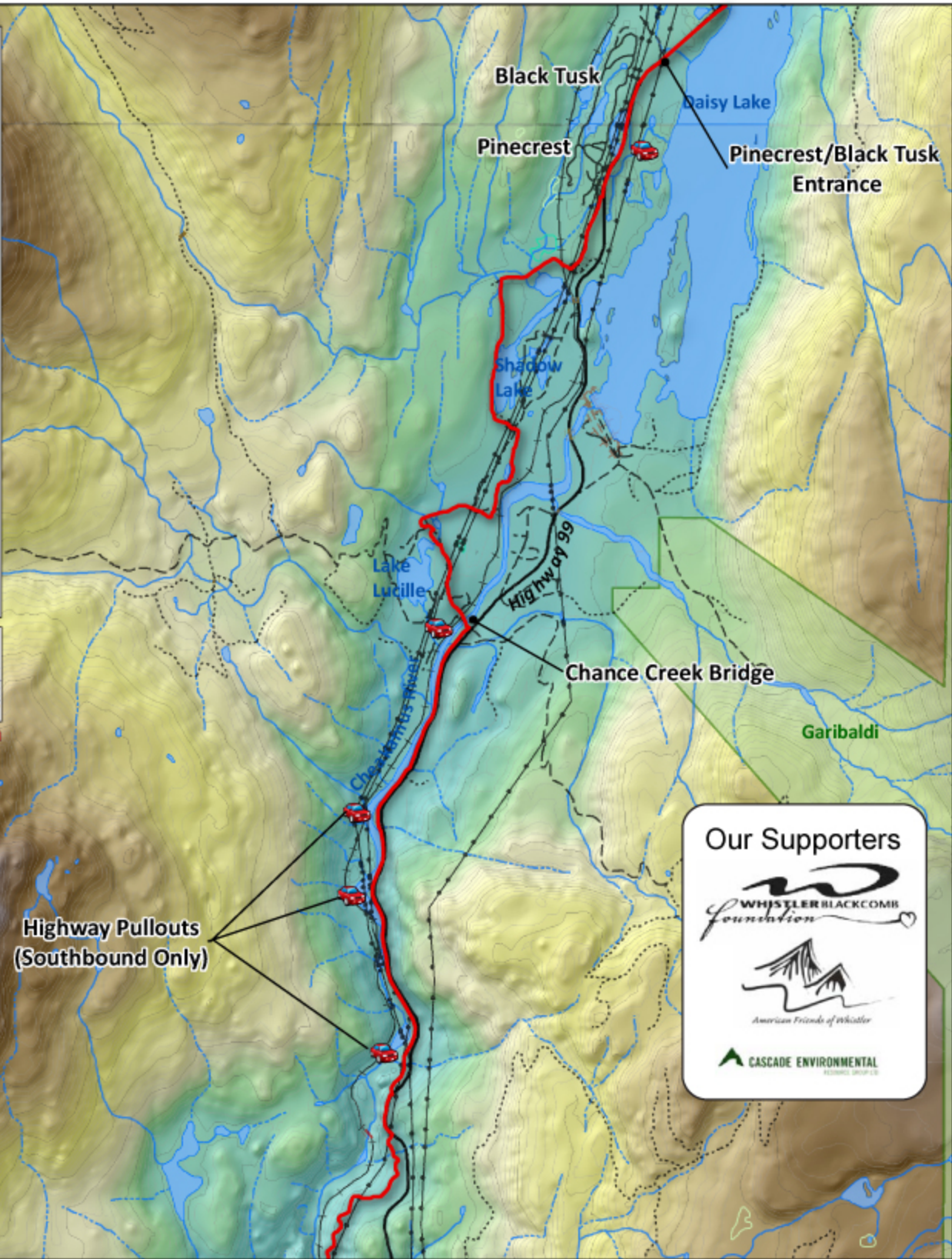
N
W E
S

0 0.25 0.5 1
Kilometers
1:50,000

- Sea to Sky Trail
- Parking
- Washrooms
- Drinking Water
- Camping/Tenting

Squamish - Lillooet
REGIONAL DISTRICT

www.SeaToSkyTrail.ca



Our Supporters

Whistler Blackcomb Foundation

American Friends of Whistler

CASCADE ENVIRONMENTAL

Our Partners

Trans Canada Trail
Sentier Transcanadien

SQUAMISH
OUTDOOR RECREATION CAPITAL OF CANADA

WHISTLER

Village of **PEMBERTON**

BRITISH COLUMBIA
The Best Place on Earth

Recreation Sites
and Trails **BC**

BRITISH COLUMBIA
The Best Place on Earth

BCParks

TRAILS BC