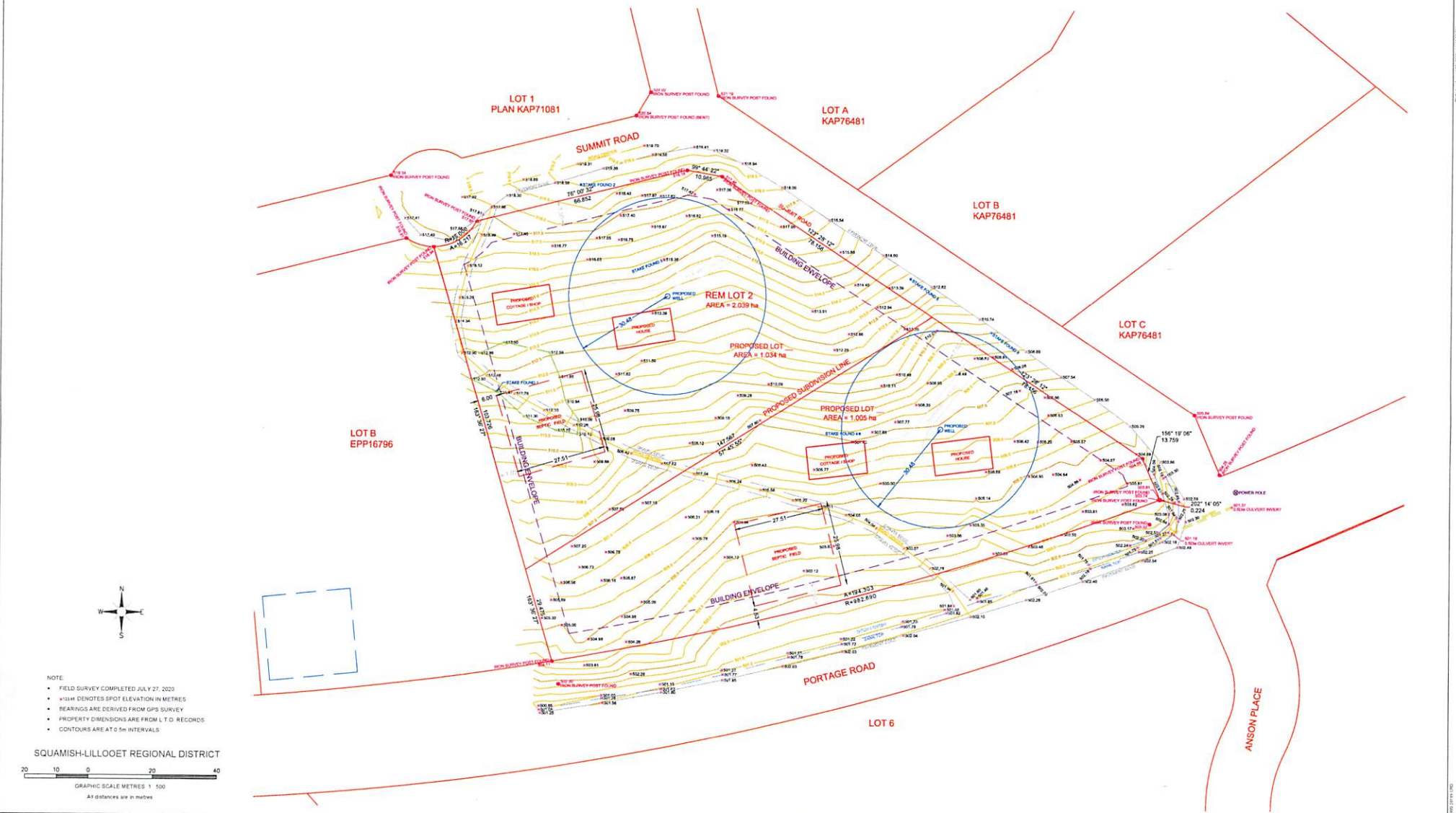


PLAN SHOWING TOPOGRAPHY AND SITE FEATURES SITUATED UPON LOT 2, D.L. 1251, LILLOOET DISTRICT, PLAN KAP71081 EXCEPT PLAN KAP72339



DOUG BUSH SURVEY SERVICES LTD. Douglas J. Bush, ASCT, RSIG Applied Science Technologist (Geomatics) Unit 18, 1370 Alpha Lake Road, Whistler, B.C. V8E 0H9 Phone 932-3314 / Fax 932-3039 E-mail: dougb@dbss.ca / http://dbss.ca	Revision :	Notes:  ELEVATIONS ARE GEODETIC CVD2N DERIVED FROM MONUMENT NO. 817583 (TABLE MARKING 850278) LOCATED ON NORTHWEST SIDE OF PORTAGE ROAD IN ROCK CUT AT SOUTH END OF GATES LAKE ELEVATION USED = 434.117 METRES	Plan date: August 20, 2020	Client:  JAMES WILSON	Certified Correct:  Douglas J. Bush ASCT, RSIG Applied Science Technologist (Geomatics)  This 27th day of July, 2020	SCALE: 1:500	
			Files: 20199.CRD			Project:  REM LOT 2 SUMMIT ROAD	JOB NO.: J20199
			P.I.D.: 025-444-026				DWG.: 20149D-1