



**Lytton Complex**

(K70804 & K71086)

**FIRE SIZE:**

8807 hectares (mapped)

**FIRE STATUS:**

Out of Control

**RESOURCES:**

There are 158 firefighters, 6 helicopters, and 8 pieces of heavy equipment working on the Lytton Complex. Additionally, 2 Structure Protection Specialists, 2 Office of the Fire Commissioner Agency Reps, and 3 structure protection Task Forces are assigned to the Lytton Creek Complex. New Brunswick crews are included in this total and arrived today, July 8, 2021 to assist BC Wildfire.

**UPDATE:**

This morning - July 8, 2021, two unit crews (40 firefighters) and two task force leaders arrived from New Brunswick to assist with the Lytton Complex. Three unit crews, 60 firefighters, arrived yesterday - July 7, 2021 - to assist with firefighting efforts.

Yesterday, July 7, 2021 strong winds created challenges for firefighters - there was high intensity fire activity upslope of the Gladwin area along HWY 1. Crews were pulled from the area for safety reasons earlier in the day. Crews are planning to return today, July 8, 2021, to continue fire suppression work in that area. Yesterday afternoon, crews created a 50-foot wetline along the slope in Gladwin, ensuring fifty feet into the fire perimeter had been fully extinguished. Heavy equipment will support crews in the Gladwin area today.

Crews have been supporting structural protection and establishing control lines in the Botanie Valley and up the North side of HWY 12 and have made good progress, with assistance from heavy equipment. Today - July 8, 2021 - crews will continue structure protection work along HWY 12 and along the Northwestern portion of the fire. A second objective is to prevent fire spread further North along HWY 1.

The spot growth on the west side of the Fraser is 40 hectares in size, without growth in recent days. Crews and air resources are working on this portion of the fire as a high priority. On July 7, 2021 crews established a 100 foot wetline around the fire perimeter. Crews are currently working towards full extinguishment of this area.

**ADDITIONAL CONTACT INFORMATION:**

**Lytton Complex Information Team** | Hours: 0700-2200

778 694-0787 | [BCWS.LyttonComplexInfo@gov.bc.ca](mailto:BCWS.LyttonComplexInfo@gov.bc.ca)




**Lytton Complex**

(K70804 &amp; K71086)

**FIRE SIZE:**

8807 hectares (mapped)

**FIRE STATUS:**

Out of Control

**LYTTON BUS TOUR:**

The Thompson-Nicola Regional District has announced it is coordinating a tour of the community of Lytton this Friday, July 9, 2021 for evacuated residents. The tour is being coordinated in conjunction with the Lytton First Nation to allow impacted residents to view the area affected by the Lytton Creek Fire (K71086).

Because residents were dispersed to several different communities after the fire, arrangements are being made to pick up residents at several different locations: possibly Whistler, Chilliwack, Merritt and Kamloops, although the locations have not yet been confirmed. Residents have been asked to limit attendees to two members per household in order to accommodate as many people as possible.

To register for the bus tour, residents must call the TNRD Emergency Operations Centre 1-866-377-7188 or email [emergency@tnrd.ca](mailto:emergency@tnrd.ca).

**LYTTON ANIMAL OPERATION:**

The feeding and rescue operation for animals that are still within the evacuated areas as a result of the Lytton Creek Fire is taking place today, July 8, 2021. A specialized SPCA team is coordinating the operation. Any Village of Lytton or TNRD resident that has animals in the area that need attention, are asked to contact the TNRD at 250-377-7188 or email [emergency@tnrd.ca](mailto:emergency@tnrd.ca) as soon as possible to provide details.

This animal operation will use a specialized team to ensure the safety of the individuals entering the area as well as the animals they are attending to. The Lytton First Nation is also coordinating something for their residents. Residents of Lytton First Nation should contact their band office to arrange for care or rescue of their animals.

**ADDITIONAL CONTACT INFORMATION:**
**Lytton Complex Information Team** | Hours: 0700-2200

778 694-0787 | [BCWS.LyttonComplexInfo@gov.bc.ca](mailto:BCWS.LyttonComplexInfo@gov.bc.ca)

[www.bcwildfire.ca](http://www.bcwildfire.ca)


BC Forest Fire Info



@BCGovFireInfo


[www.firesmartbc.ca](http://www.firesmartbc.ca)





**Lytton Complex**

(K70804 & K71086)

**FIRE SIZE:**

8807 hectares (mapped)

**FIRE STATUS:**

Out of Control

**EVACUATION ORDERS AND ALERTS:**

The Thompson-Nicola Regional District announced on July 6, 2021 that it has downgraded the Evacuation Order to an Alert for some properties in Electoral Area I (Blue Sky Country) and rescinded the Evacuation Order for some additional properties. Some properties remain on Evacuation Order until. To see the full list of affected properties and the changes in the order, please visit [www.tnrd.ca](http://www.tnrd.ca):

TNRD Emergency Operations Centre  
Phone: (250) 377-7188  
Toll Free: 1-866-377-7188  
[emergency@tnrd.ca](mailto:emergency@tnrd.ca)

Squamish-Lillooet Regional District  
Phone: (604) 894-6371  
Toll Free: 1-866-298-7753  
[info@slrd.bc.ca](mailto:info@slrd.bc.ca)

**AREA RESTRICTION:**

An area restriction is in place as of July 3, 2021 for an area over the Lytton Complex area. This is NOT an evacuation alert or order. Under this order and Section 11(2) of the Wildfire Act, a person must not remain in or enter the restricted area without the prior written authorization of an official designated for the purposes of the Wildfire Act, unless the person enters the area only in the course of:

- travelling to or from his or her principle residence that is not under an evacuation order;
- travelling to or from private or leased property for the purposes of accessing a secondary residence or recreational property that is not under an evacuation order;
- travelling as a person acting in an official capacity;
- travelling for the purpose of supporting wildfire suppression activities; and
- engaging and/or participating in agricultural activities pertaining to livestock or vineyard management on private or leased property.

The area restriction in place currently expires on October 15, 2021. However, once the area is considered safe for entry, the BC Wildfire Service will rescind the order.

**ADDITIONAL CONTACT INFORMATION:**

**Lytton Complex Information Team** | Hours: 0700-2200

778 694-0787 | [BCWS.LyttonComplexInfo@gov.bc.ca](mailto:BCWS.LyttonComplexInfo@gov.bc.ca)





**Lytton Complex**

(K70804 & K71086)

**FIRE SIZE:**

8807 hectares (mapped)

**FIRE STATUS:**

Out of Control

**RESOURCES FOR BUSINESSES AFFECTED BY WILDFIRES:**

The BC Economic Development Association (BCEDA) has launched a special webpage dedicated to Wildfires 2021— <https://www.bceda.ca/wildfires.php> — which contains a live document where information will be added for business and communities, plus manuals and toolkits dedicated to disaster preparation.

As the Province and others start to roll out support programs, BCEDA will update the live document so that businesses can easily find this information.

BCEDA will also launch a business survey dedicated to businesses being impacted by wildfires. This survey will identify short and long terms needs of business and issues related to the workforce. The information collected will be shared in aggregate formats with the Province of BC and others. BCEDA is working with the secretariat to the Indigenous Business and Investment Council to gather information on Indigenous impacted businesses. No personal information collected will be shared.

[Resources for Wildfire Impacted Individuals & Businesses 2021 \(Live Document\)](#) - A document of resources that is constantly being updated as new information and resources are released. Check back in on this document regularly for up-to-date information regarding the wildfires.

[Top 10 Steps to Prepare Your Business for Evacuation](#) - A document that can be made available to businesses in your community to aid in, and encourage, preparation for an evacuation scenario. It highlights the 10 steps necessary to prepare a business for an evacuation.

[Province of BC: Disaster Financial Assistance](#)—Following a disaster, the provincial government may declare the event eligible for Disaster Financial Assistance (DFA). Once declared, the DFA program may compensate individuals for essential uninsurable losses and/or reimburse local governments for damaged infrastructure.

[Local Economic Recovery & Restart Toolkit](#) - This toolkit provides a collection of resources developed to assist local councils, organizations and individuals involved in community economic recovery following an emergency such as the COVID-19 pandemic, wildfires and floods

**Spot a wildfire, smoke or illegal fire activity?** Call 1 800 663-5555 or \*5555 on your cellphone.



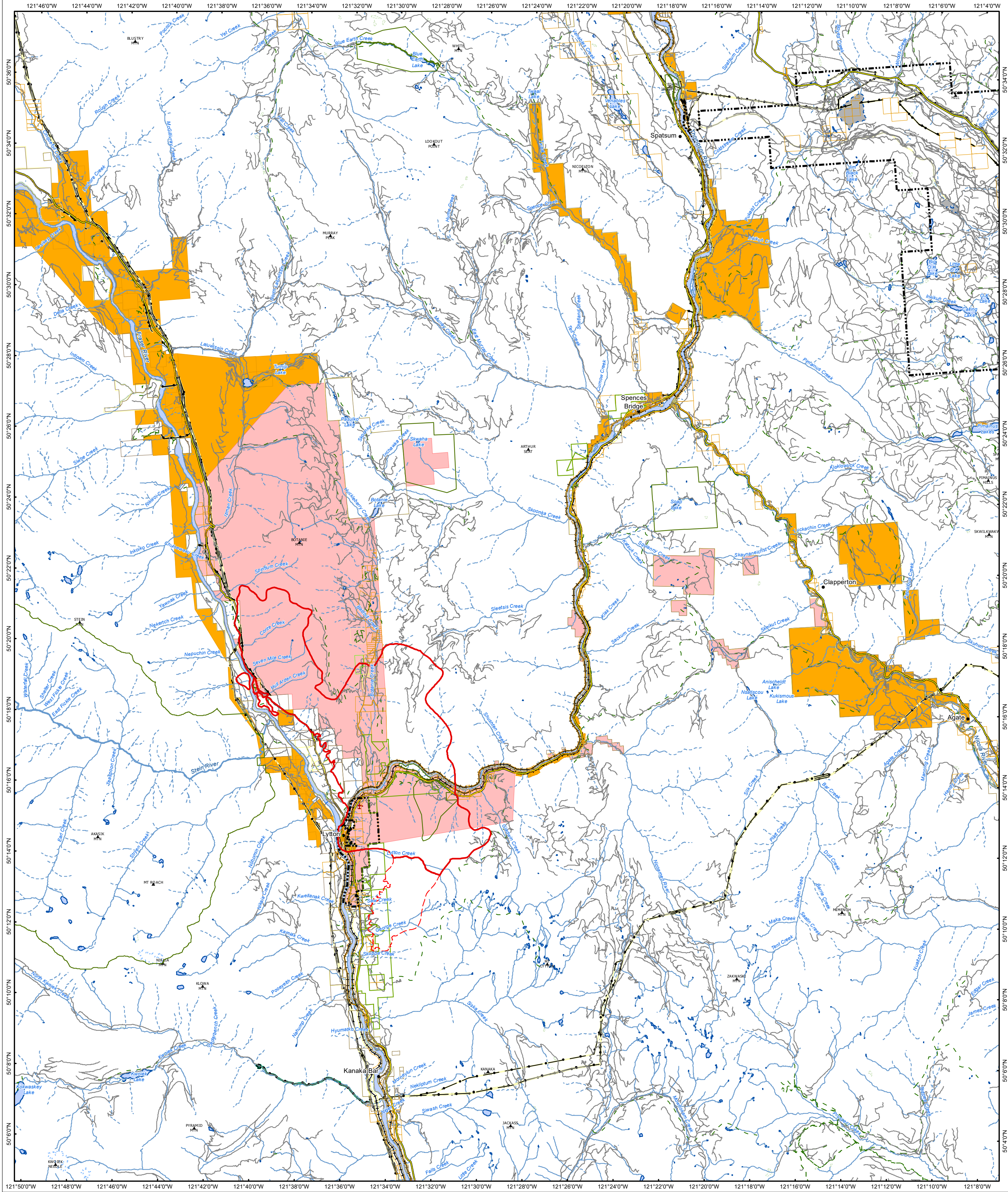


# WILDFIRE UPDATE

## ROLES AND RESPONSIBILITIES

BC Wildfire Service	Emergency Management BC	Local municipalities and regional districts	First Nations
<ul style="list-style-type: none"> <li>- BCWS's jurisdiction covers all BC Parks, Crown and private lands, but does not include the boundaries of local governments that have forest fire prevention bylaws and are serviced by a fire department.</li> <li>- BCWS speaks directly about <b>wildfires</b> (i.e. fire status, operations, etc.) and is responsible for disseminating wildfire updates to local governments, stakeholders, First Nations and the public.</li> <li>- BCWS does <u>not</u> announce Strategic Evacuation Orders or Alerts.</li> <li>- BCWS <u>does</u> announce Tactical Evacuations.</li> <li>- In the event of an imminent threat to public safety, BCWS can authorize an immediate <b>Tactical Evacu-</b></li> </ul>	<ul style="list-style-type: none"> <li>- EMBC coordinates communication across all agencies and stakeholders to support communities.</li> <li>- EMBC provides advice to evacuees and support to communities regarding Emergency Operations Centres and Emergency Support Services.</li> </ul>	<ul style="list-style-type: none"> <li>- Local Municipalities and Regional Districts speak directly about <b>Strategic Evacuation Orders and Alerts</b> in their respective jurisdictions.</li> <li>- Local Municipalities and Regional Districts <u>do not</u> speak about the status of a wildfire unless the fire occurs within their jurisdiction. For example, if a wildfire <u>starts</u> within the boundaries of a local government, BCWS will often assist the local fire department with suppression efforts. If the fire spreads into Crown land to become a wildfire, BCWS will often assume control.</li> </ul>	<ul style="list-style-type: none"> <li>- On IR lands, Evacuation Orders and Alerts are implemented by a Band Council Resolution or other.</li> <li>- A designated person (s) from the respective First Nations community will speak to Evacuation Orders and Alerts on IR lands.</li> </ul>





Lytton Creek  
K71086  
PUBLIC INFORMATION MAP

Perimeter Date: 2021-07-07  
Hectares: 8807.4 HA

**Disclaimer:**  
Wildfire perimeters for the current fire season, including both active and inactive fires, are supplied from various sources. The data is refreshed from operational systems nightly to the public map. Wildfire data may not reflect the current fire situation, and therefore should only be used for reference purposes.  
  
Wildfire data from the incident is updated when practicable and the occurrence of individual fire updates will vary. The information is intended for general purposes only and should not be relied on as accurate because fires are dynamic and circumstances may change quickly. The levels of current fire activity within the mapped fire perimeters can vary widely.

- |                           |                       |                                      |
|---------------------------|-----------------------|--------------------------------------|
| Airship or Other Facility | EVACUATION ORDER      | Penstock                             |
| Populated Place           | EVACUATION ALERT      | BC Park, Protected Area, Eco Reserve |
| Rail Line                 | Fire Perimeter        | Conservation Lands                   |
| Transmission Lines        | Other Fire Perimeters | Regional & Local Parks               |
| Main Road                 | Municipality          |                                      |
| Highway                   | Indian Reserve        |                                      |
| Ferry Route               | Private Land          |                                      |
| Road                      | Mixed Ownership       |                                      |
| Trail                     | Federal Land          |                                      |
|                           | Municipal Land        |                                      |
|                           | Crown                 |                                      |
|                           | Unknown               |                                      |



1:125,000

0 5 Km



Ministry of  
Forests, Lands, Natural  
Resource Operations  
and Rural Development  
BC Wildfire Service

