

Virtual FireSmart Seminar

May 17th, 2021



SQUAMISH - LILLOOET
REGIONAL DISTRICT

2021 SLRD Residential FireSmart Program



SQUAMISH - LILLOOET
REGIONAL DISTRICT

2021 SLRD Residential FireSmart Program



- Background
- Residential FireSmart Home Assessments
- SLRD FireSmart Rebate Program
- Next Steps

Background



The SLRD has received funding from the 2021 Union of BC Municipalities (UBCM) Community Resiliency Initiative (CRI) to expand our FireSmart program. Initiatives include:

- Residential Home Ignition Zone Assessments
- The provision of vegetative debris removal
- FireSmart Residential Rebate Program
- FireSmart Community Education Days

Residential FireSmart Home Assessments

- The SLRD is contracting a certified Local FireSmart Representative (LFR)
- Homeowners are encouraged to book a time with the LFR to conduct “Pre-work” Home Ignition Zone Assessments
- After the FireSmart improvements are completed, book a second “Post-work” Home Ignition Zone Assessment
- Claim the Rebate
- Email FireSmart@slrd.bc.ca to book



**FIRESMART®
HOME IGNITION
ZONE ASSESSMENT
SCORE CARD**

HOME ADDRESS:


For each Hazard Factor - select one point rating score and enter in score column on right.

HOME		HAZARD FACTOR				CHARACTERISTICS AND POINT RATINGS				SCORE
1	Roof material	Fire-Rated - good condition <i>(metal, clay, asphalt shingles)</i>				Fire-Rated - poor condition or unrated <i>(wood shakes)</i>				0
		0				30				
2	Gutter type and roof cleanliness	Non-combustible gutter - no debris		Combustible gutter - no debris		Non-combustible gutter with debris		Combustible gutter with debris		0
		0		6		10		16		
3	Vents and openings	Non-combustible, fire-rated vents or vents with 3 mm screening				Combustible vents, not fire-rated or without 3 mm screening				0
		0				6				
4	Eaves	Closed or Boxed-in eaves				Open eaves				0
		0				6				
5	Building exterior or siding	Non-combustible or Ignition resistant <i>(fire cement, stucco, log, metal, brick/stone)</i>				Combustible or non-ignition resistant <i>(Wny, wood, acrylic stucco)</i>				0
		0				6				

SLRD FireSmart Rebate Program



- Rebates for 50% of the cost of eligible activities to a maximum of \$500 per property
- Examples of eligible activities:
 - Install UL/ASTM fire-rated roofing (metal, clay, asphalt shingles)
 - Install ignition resistant or non-combustible exterior siding material
 - Remove combustible debris, materials, fences or plants

FireSmart Assessment Work Hours Estimate Form 

Please note CRI only provides funding for FireSmart activities on residential property or homes that are outlined in below table.

Prepared By: _____
Phone Number: _____
Email Address: _____

Table 1 – Work hours estimate and associated costs for eligible FireSmart activities

Eligible FireSmart Activity		Estimated Hours	Cost Per Hour	Total Cost
Home				
Roofing	Installation of Class A UL/ASTM fire rated roofing (e.g. Metal, clay tile or asphalt shingles)		25.43	0.00
	Installation of non-combustible gutters		25.43	0.00
	Removal of needles, leaves and other combustible materials (e.g. overhanging branches)		25.43	0.00
	Installation of closed eaves and vents with 3 mm (1/8") screening or ASTM ember resistant rated vents		25.43	0.00
Siding	Installation of ignition resistant (fibre cement board, log) or non-combustible (stucco, metals, brick/stone)		25.43	0.00
	Correction of all gaps, cracks, missing siding or holes where embers could accumulate, lodge or penetrate		25.43	0.00

Vegetative Debris Removal



Two locations to drop off vegetative debris:

- Marshall Lake Burn Pit
- Gold Bridge Transfer Station

As the pile gets larger, the SLRD will send a wood chipper to reduce its size so more debris can be added. The debris piles will then be burned in the fall.

PLEASE – Only bring vegetative debris to the burn pits!

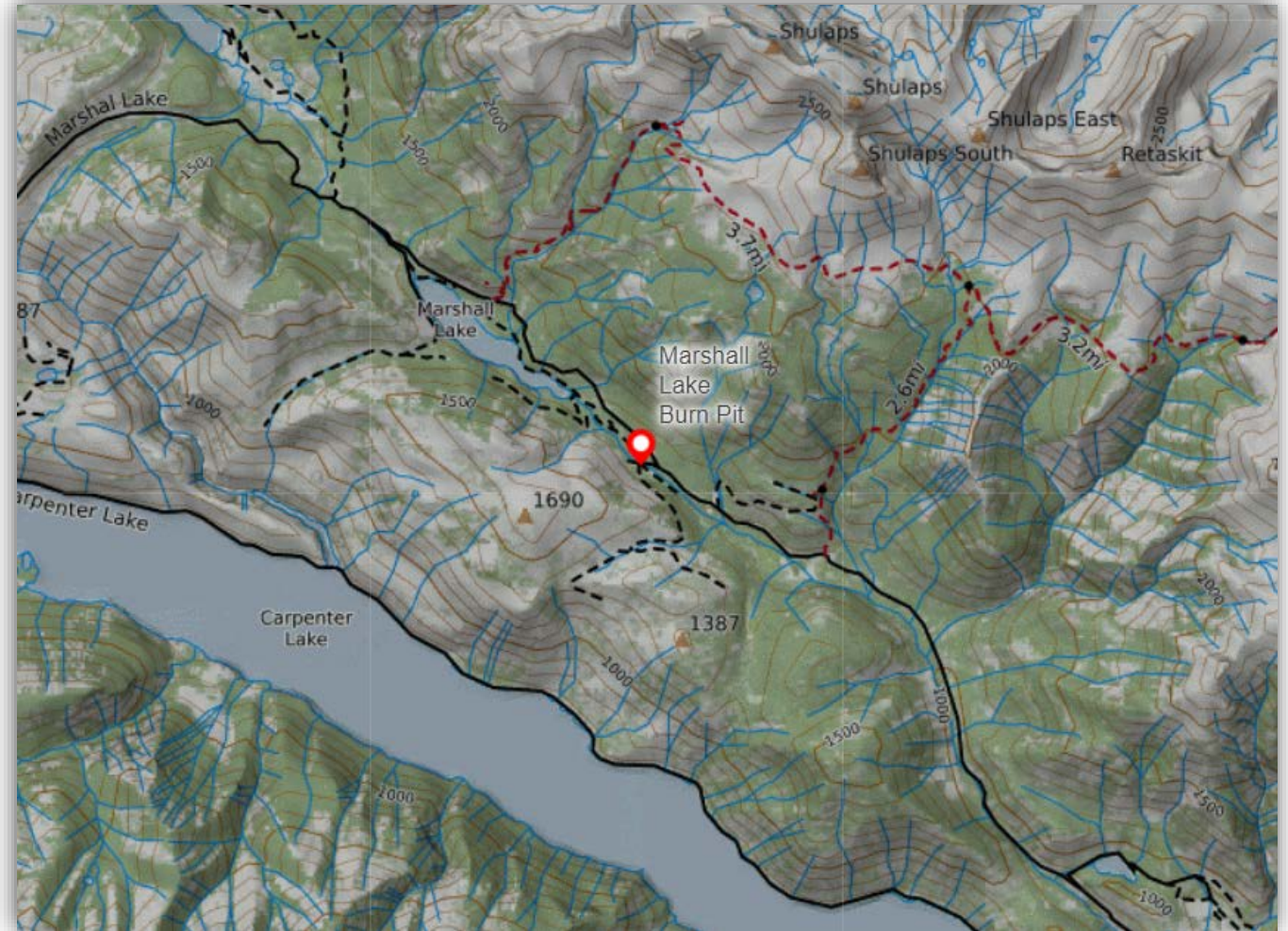
Non-vegetative waste could present a hazard for the people who will chip and burn the debris piles!

Marshall Lake Burn Pit

Location:

Off of Marshall Lake Road
toward 'The Burn', near
Brett Creek Meadows

***Please dispose of your
vegetative debris
responsibly!***



Gold Bridge Transfer Station



Location:

Saddle Road, Gold Bridge

Day	Hours of Operation
Summer hours (May long weekend to Labour Day)	
Sunday	10:00 a.m. - 4:00 p.m.
Monday	10:00 a.m. - 4:00 p.m.
Thursday	10:00 a.m. - 4:00 p.m.
Winter hours (Labour Day to May long weekend)	
Sunday	10:00 a.m. - 4:00 p.m.
Thursday	10:00 a.m. - 4:00 p.m.



Next Steps...



- Visit <https://firesmartbc.ca/> to learn more about ways you can protect your home from wildfires
- Email FireSmart@slrd.bc.ca to book a Residential Home Ignition Zone Assessment
- Visit www.slrd.bc.ca/firesmart_seminar for more information and Resources from the SLRD and FireSmart BC